



Source: Census 2000 Data, The CaSIL, MBA GIS 2012.



Michael Brown Associates



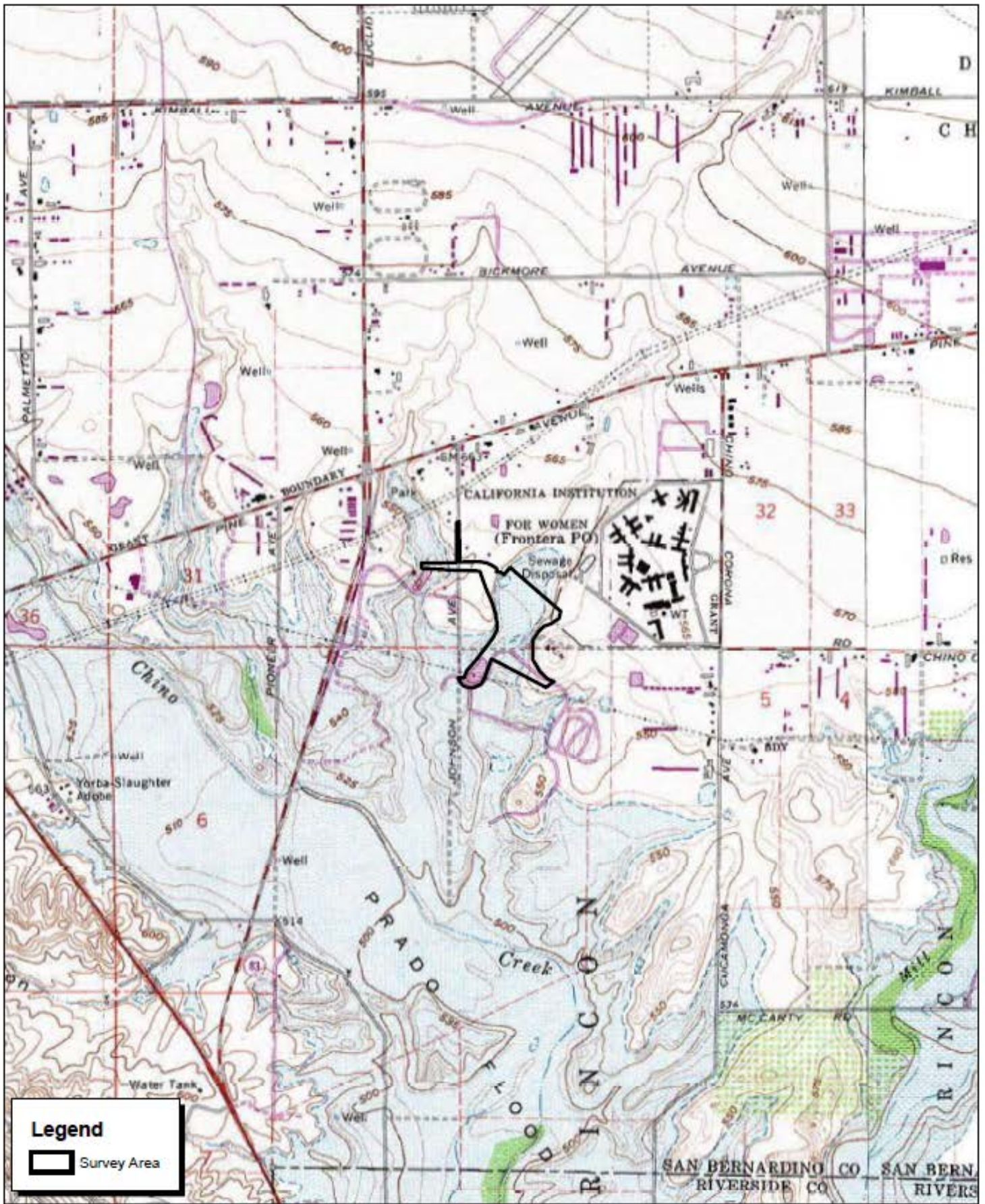
5 2.5 0 5 Miles

## Exhibit 1 Regional Location Map

00130160 • 07/2012 | 1\_regional.mxd

CITY OF CHINO • PRESERVE SEWER IMPROVEMENT PROJECT  
ENVIRONMENTAL ASSESSMENT





Source: TOPO! USGS Prado Dam (1978) and Corona North (1978) 7.5' DRG.

Exhibit 2

Local Vicinity Map  
Topographic Base

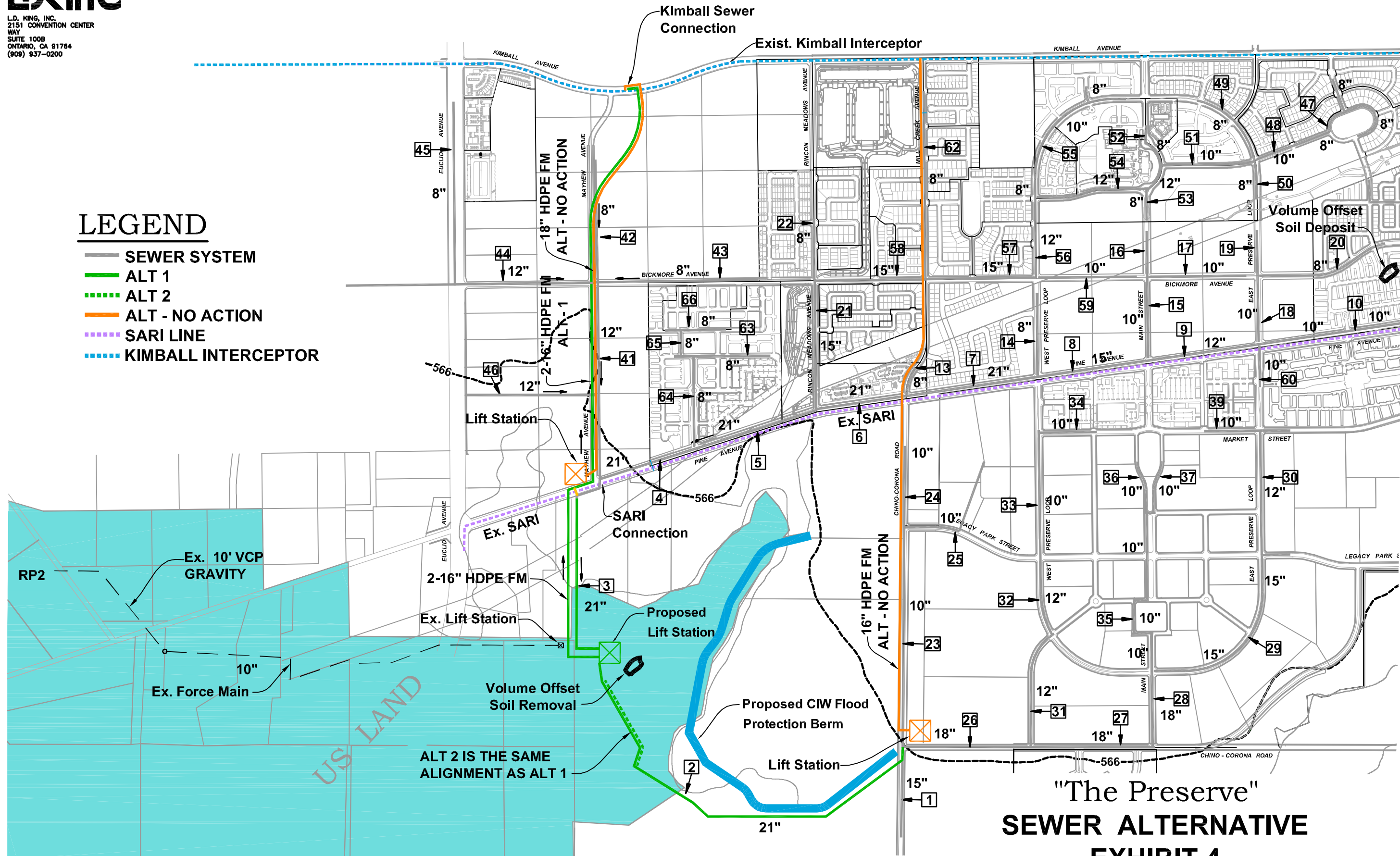






## LEGEND

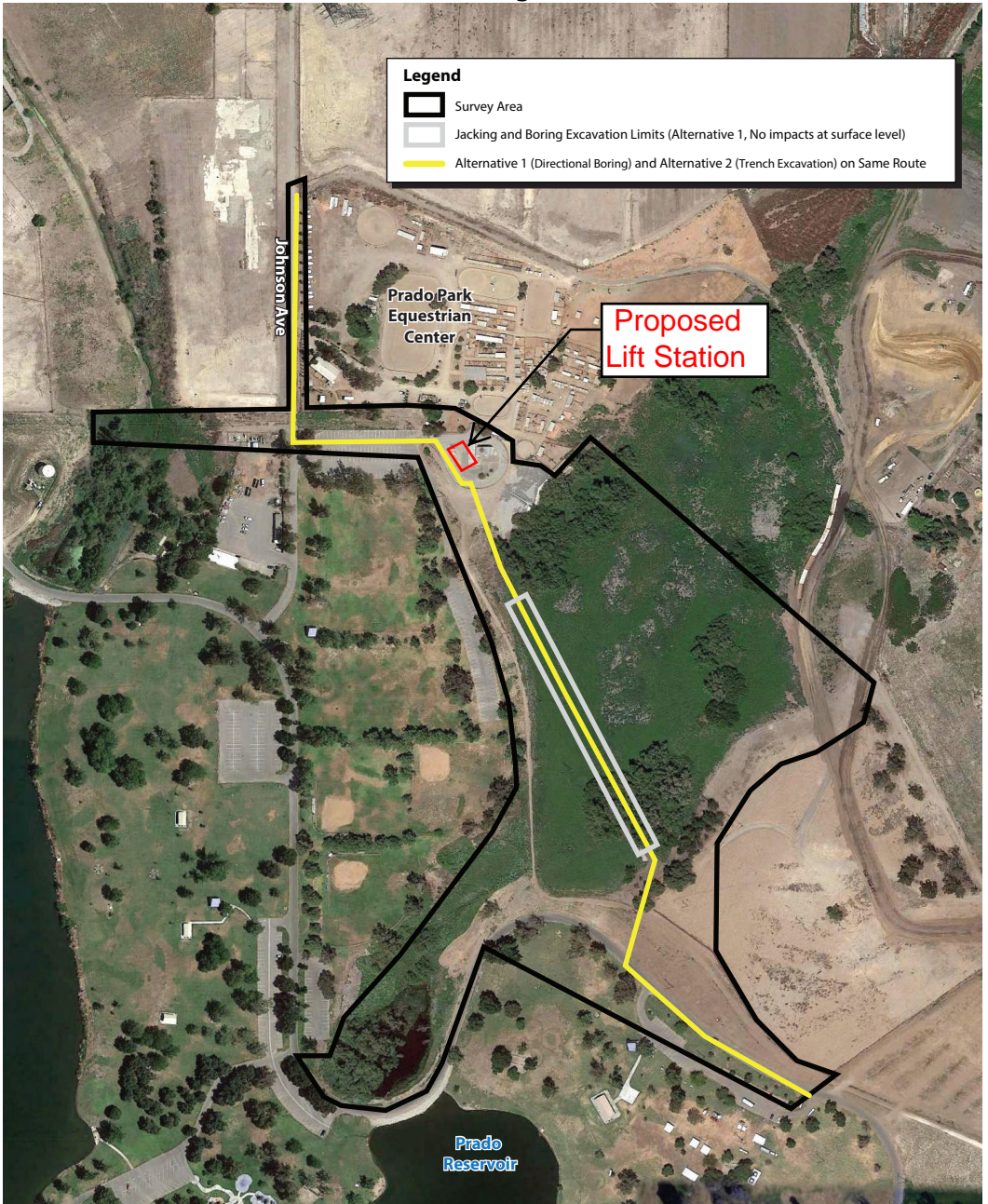
- SEWER SYSTEM
- ALT 1
- ALT 2
- ALT - NO ACTION
- SARI LINE
- KIMBALL INTERCEPTOR



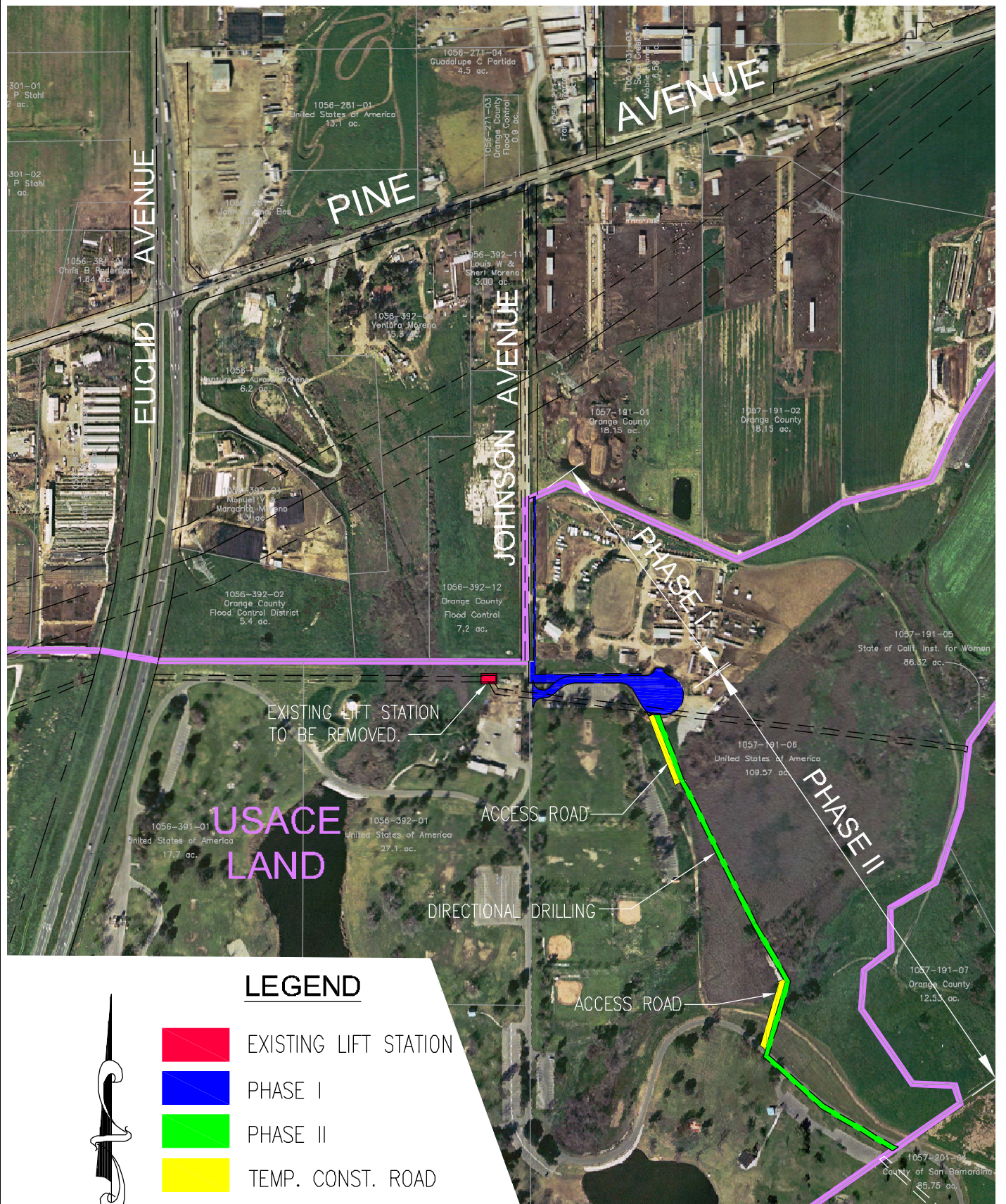
"The Preserve"  
**SEWER ALTERNATIVE  
EXHIBIT 4**



# Alternate Easement Alignments - Exhibit 5







## LEGEND

- EXISTING LIFT STATION
- PHASE I
- PHASE II
- TEMP. CONST. ROAD

SCALE:

1"=500'

# PROJECT PHASING EXHIBIT 6

**L.D. KING**  
L.D. KING, INC.  
2151 CONVENTION CENTER WAY  
SUITE 100B  
ONTARIO, CA 91764  
(909) 937-0200





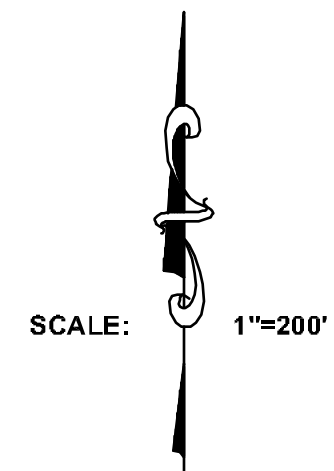
 **CONSTRUCTION HAUL ROUTE**

SCALE:  1"=600'

## SPOIL HAUL ROUTE EXHIBIT 7

**LKING**  
L.D. KING, INC.  
10390 COMMERCE CENTER DRIVE  
SUITE 250  
RANCHO CUCAMONGA, CA 91730  
(909) 945-0528





- PHASE I CONSTRUCTION
- PHASE II CONSTRUCTION
- USACE LAND
- MANHOLE
- TEMPORARY ACCESS ROAD

## DISTURBANCE AREA EXHIBIT 8

**LDKING**  
 L.D. KING, INC.  
 10390 COMMERCE CENTER DRIVE  
 SUITE 250  
 RANCHO CUCAMONGA, CA 91730  
 (909) 945-0526



## SAMPLE OF HDD, EXCAVATOR AND DUMP TRUCK EQUIPMENT

### EXHIBIT 8A



Source: [http://dbnewhomes.com/uploads/image/DIRECTIONAL\\_DRILLING\\_RESIDENTIAL\\_VIEWS.png](http://dbnewhomes.com/uploads/image/DIRECTIONAL_DRILLING_RESIDENTIAL_VIEWS.png) Accessed 1/28/16

---

*Horizontal Directional Drilling (HDD) methods would be used within jurisdictional waters with equipment similar to the above pictured.*

---

---

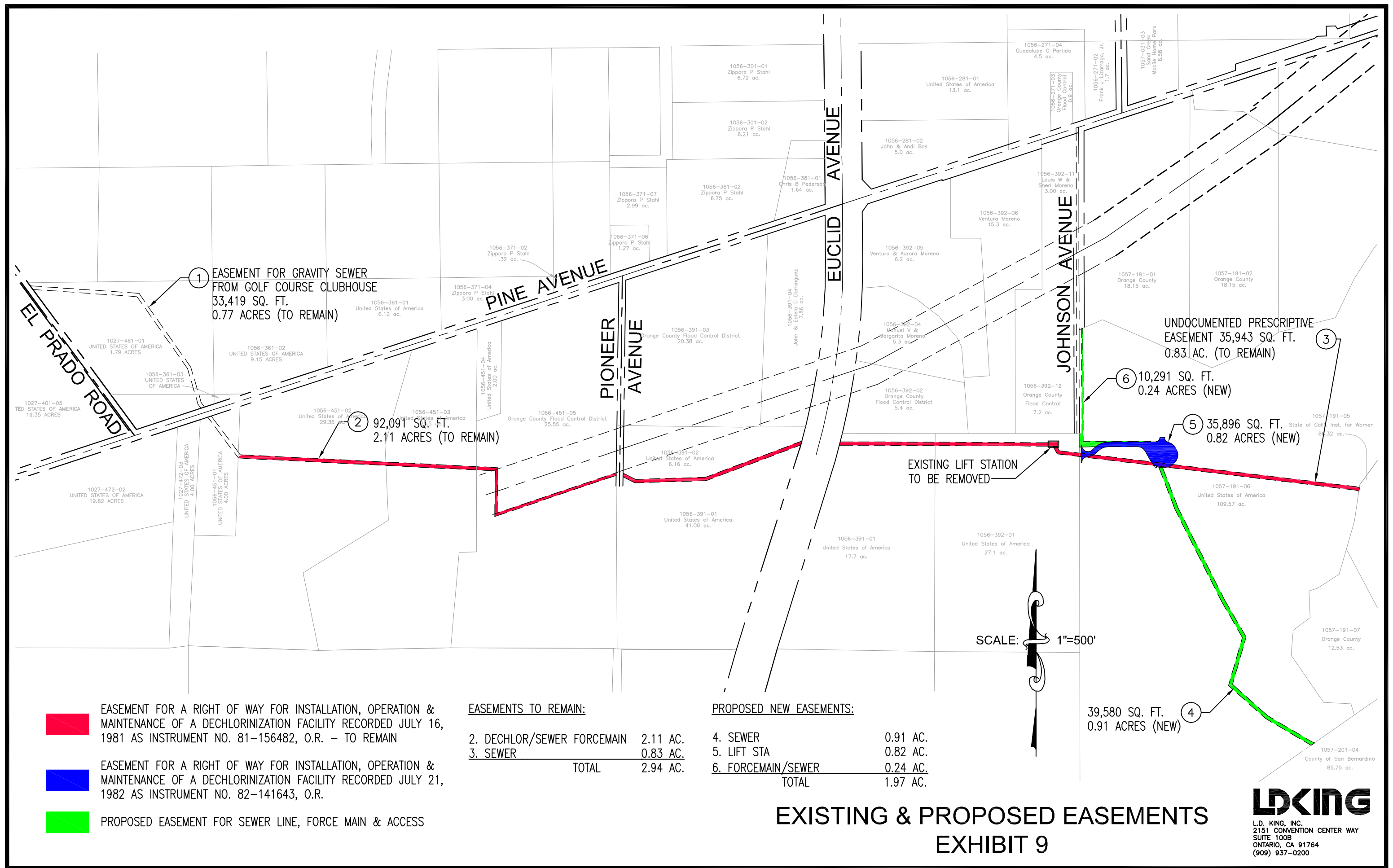
*HDD methods would utilize an excavator and a dump truck similar to the picture on the right.*

---



Source: <http://www.hulcher.com/contractor-equipment/maintenance-equipment/> Accessed 1/28/16





- █ EASEMENT FOR A RIGHT OF WAY FOR INSTALLATION, OPERATION & MAINTENANCE OF A DECHLORINIZATION FACILITY RECORDED JULY 16, 1981 AS INSTRUMENT NO. 81-156482, O.R. - TO REMAIN
- █ EASEMENT FOR A RIGHT OF WAY FOR INSTALLATION, OPERATION & MAINTENANCE OF A DECHLORINIZATION FACILITY RECORDED JULY 21, 1982 AS INSTRUMENT NO. 82-141643, O.R.
- █ PROPOSED EASEMENT FOR SEWER LINE, FORCE MAIN & ACCESS

| EASEMENTS TO REMAIN:       |          |
|----------------------------|----------|
| 2. DECHLOR/SEWER FORCEMAIN | 2.11 AC. |
| 3. SEWER                   | 0.83 AC. |
| TOTAL                      | 2.94 AC. |

| PROPOSED NEW EASEMENTS: |          |
|-------------------------|----------|
| 4. SEWER                | 0.91 AC. |
| 5. LIFT STA             | 0.82 AC. |
| 6. FORCEMAIN/SEWER      | 0.24 AC. |
| TOTAL                   | 1.97 AC. |

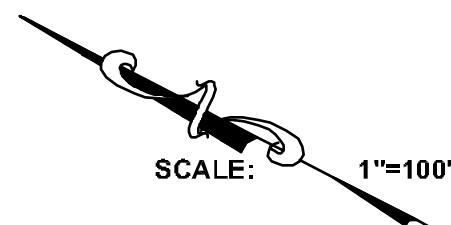
EXISTING & PROPOSED EASEMENTS  
EXHIBIT 9

**LKING**  
L.D. KING, INC.  
2151 CONVENTION CENTER WAY  
SUITE 100B  
ONTARIO, CA 91764  
(909) 937-0200





- PHASE I CONSTRUCTION**
- PHASE II CONSTRUCTION**
- TEMPORARY CONSTRUCTION EASEMENT**
- HORSE TRAIL**
- MANHOLE**



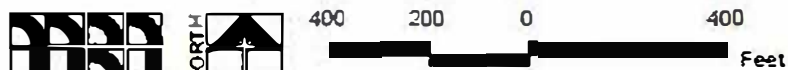
**DISTURBANCE AREA**  
**EXHIBIT 10**

**LKING**  
L.D. KING, INC.  
10390 COMMERCE CENTER DRIVE  
SUITE 250  
RANCHO CUCAMONGA, CA 91730  
(909) 945-0528





Source: ESRI Aerial Imagery, USDA Soils Data.



Michael Brandman Associates

00130160 • 02/2013 | 7\_soils.mxd

## Exhibit 11 USDA Soils Map

CITY OF CHINO • PRESERVE SEWER IMPROVEMENT PROJECT  
ENVIRONMENTAL ASSESSMENT



**Exhibit 12: Jurisdictional Wetland on Proposed Sewer Line**

