



# PUBLIC NOTICE

U.S. ARMY CORPS OF ENGINEERS  
LOS ANGELES DISTRICT

BUILDING STRONG®

## Riverside Levees Repair Project

The U.S. Army Corps of Engineers (Corps) proposes to repair damages to the Riverside Levees. The levees are on the Santa Ana River in Riverside County, California within the vicinity of State Route 60 (Pomona Freeway), Mission Avenue and Market Street. See project map below.

High flows from past storms through this reach as well as migration and impingement of the low-flow channel against the levees resulted in damages requiring repair. Preliminary damage assessments and conceptual repair designs have been completed. Engineering and environmental planning efforts to implement repairs are now underway.

The overall goals of the repair project are to (1) improve resistance to scour and erosion to better maintain the existing level flood risk minimization, and (2) reduce future in-channel maintenance requirements.

The reach of river where damages occurred is designated as critical habitat for the Santa Ana sucker (*Catostomus santaanae*), a fish species protected under the Endangered Species Act (ESA). The Corps and the U.S. Fish and Wildlife Service (Service) are coordinating closely to minimize impacts to the fish and its habitat during construction and subsequent in-channel maintenance activities. Repair designs that would reduce future in-channel maintenance requirements are under investigation. Reduction of future in-channel maintenance requirements would benefit both the fish and its habitat. Formal consultation with the Service under the ESA will occur as alternatives are further developed and the preferred alternative is identified.

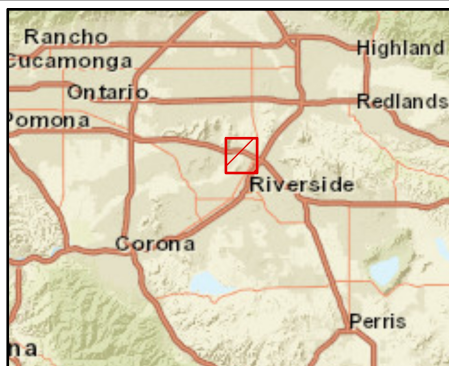
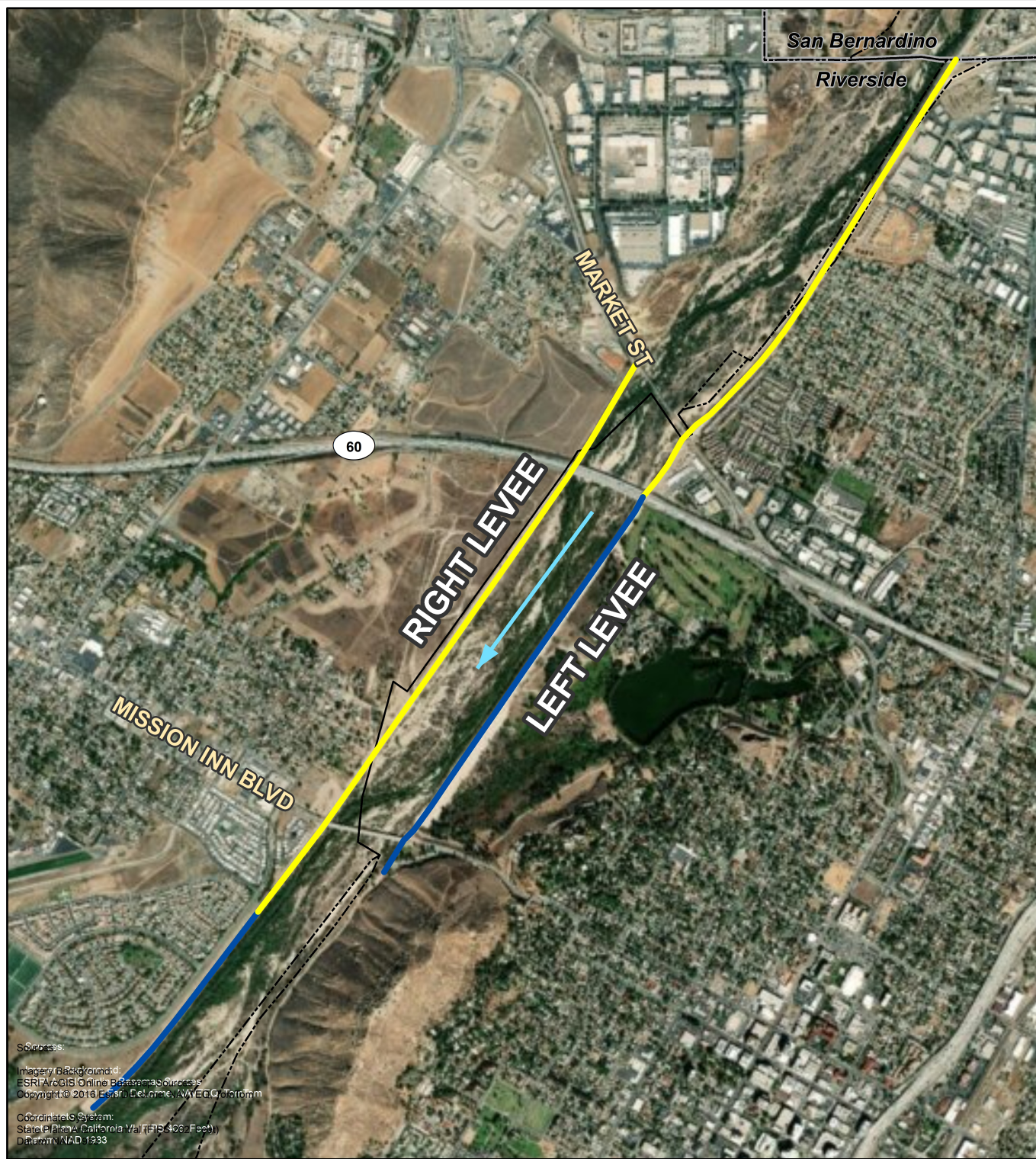
Preliminary environmental analysis indicates that potential impacts to environmental resources including the Santa Ana sucker are likely to be less than significant or can be mitigated to a level that is less than significant pursuant to the National Environmental Policy Act (NEPA). Pursuant to NEPA, the Corps is preparing an Environmental Assessment (EA) to evaluate potential environmental impacts of the proposed repairs and future operations and maintenance activities that may be required. If the EA identifies significant impacts that cannot be mitigated to a level that is less than significant, an Environmental Impact Statement would be prepared.

Comments will be accepted from February 10, 2020 to March 10, 2020. Comments can be submitted electronically to: [kenneth.wong@usace.army.mil](mailto:kenneth.wong@usace.army.mil)

Alternatively, comments can be mailed to:

U.S. Army Corps of Engineers  
Kenneth Wong, Planning Division  
915 Wilshire Blvd., Los Angeles, CA 90017.





### Legend

- County Boundary
- City Boundary
- Federal Levees
  - Damaged
  - Undamaged

0 1,000 2,000 3,000 4,000 Feet  
1 inch = 0.5 miles



FIGURE 1  
RIVERSIDE LEVEES  
VICINITY MAP



U.S. ARMY CORPS OF ENGINEERS  
LOS ANGELES DISTRICT