

APPENDIX A

AREA OF POTENTIAL EFFECTS (APE) AND LIST OF ACTIVITIES IN THE UNDERTAKING

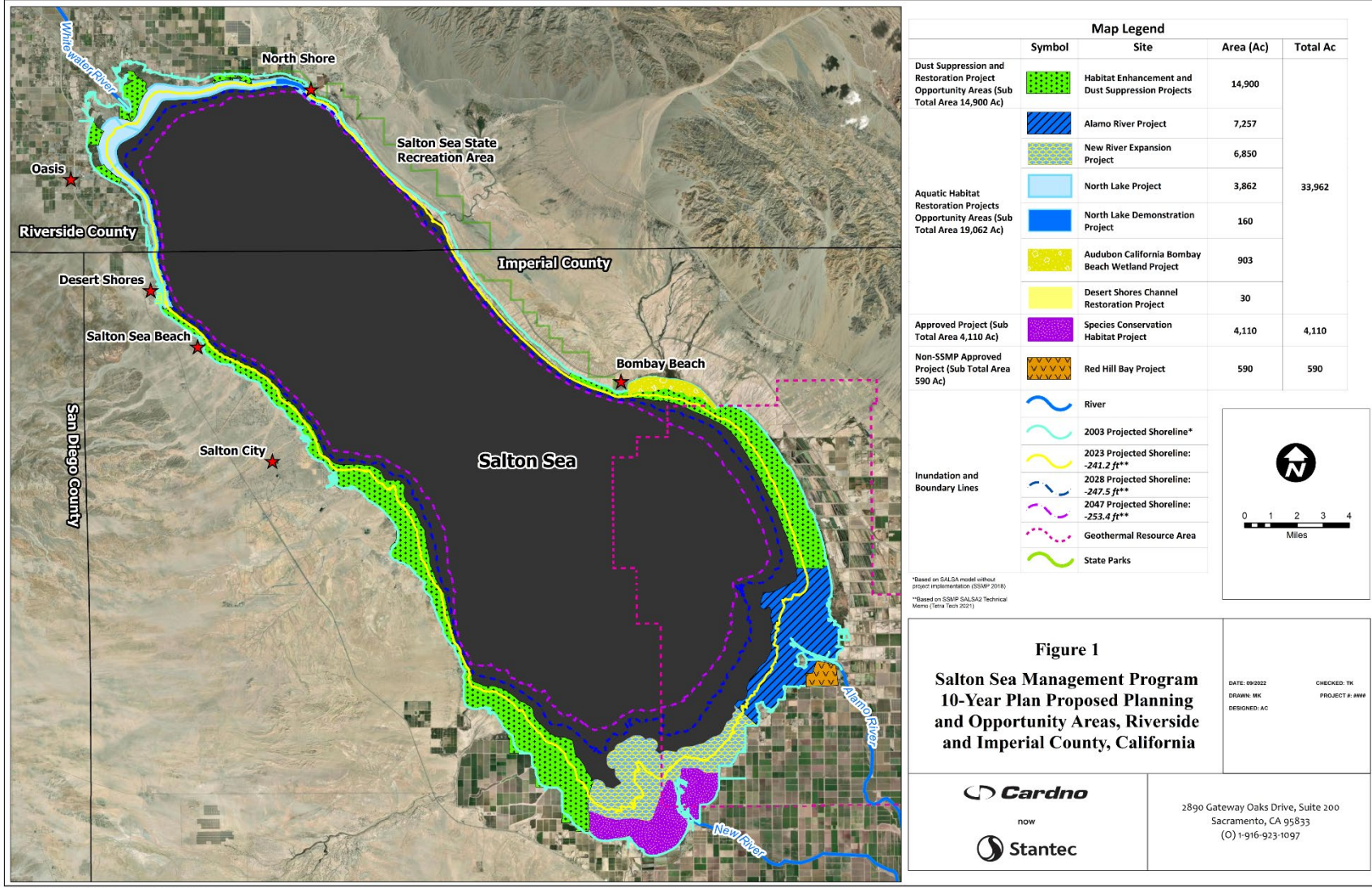


Figure 1 - Planned Project Areas

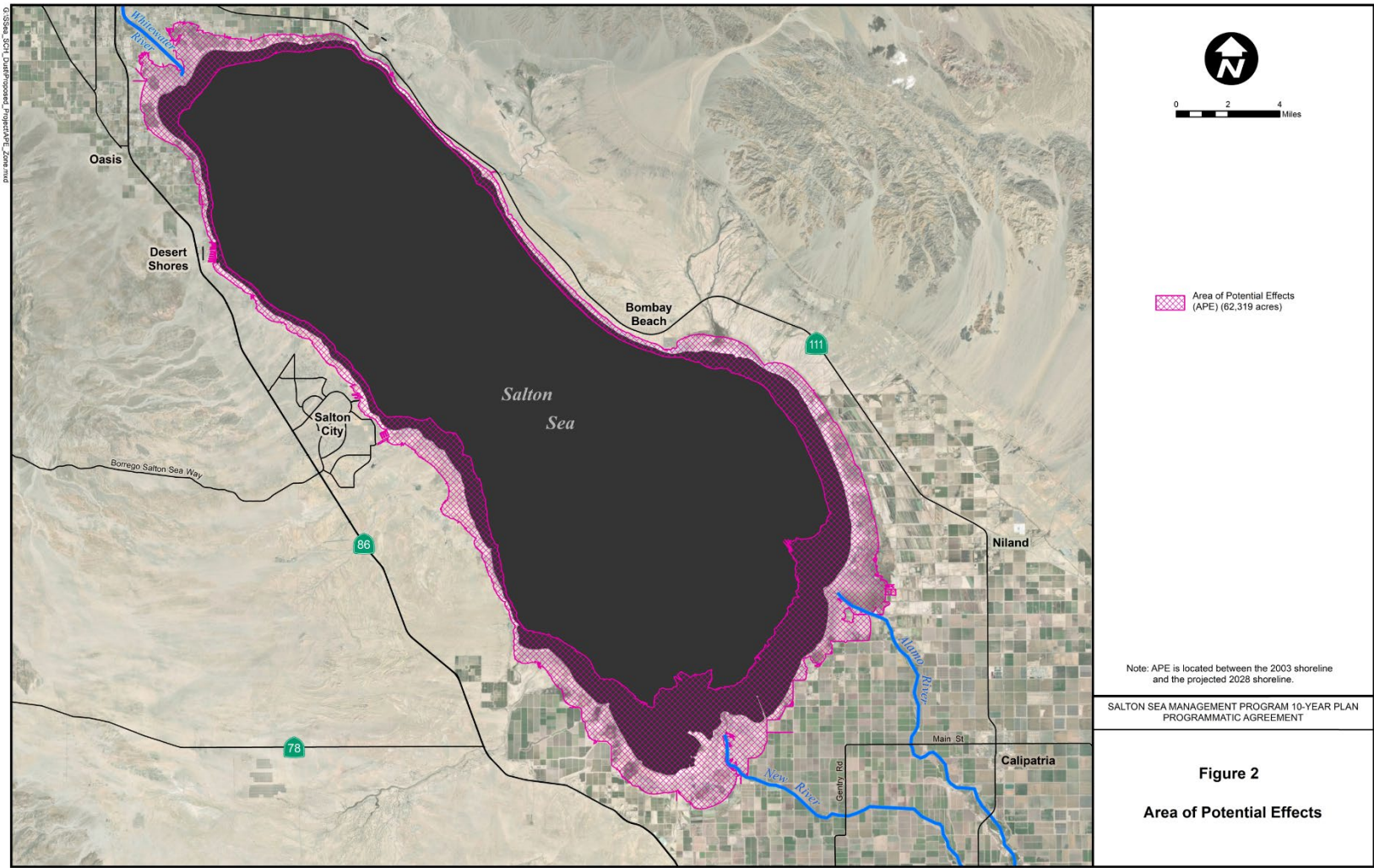


Figure 2 - APE Map for Undertaking

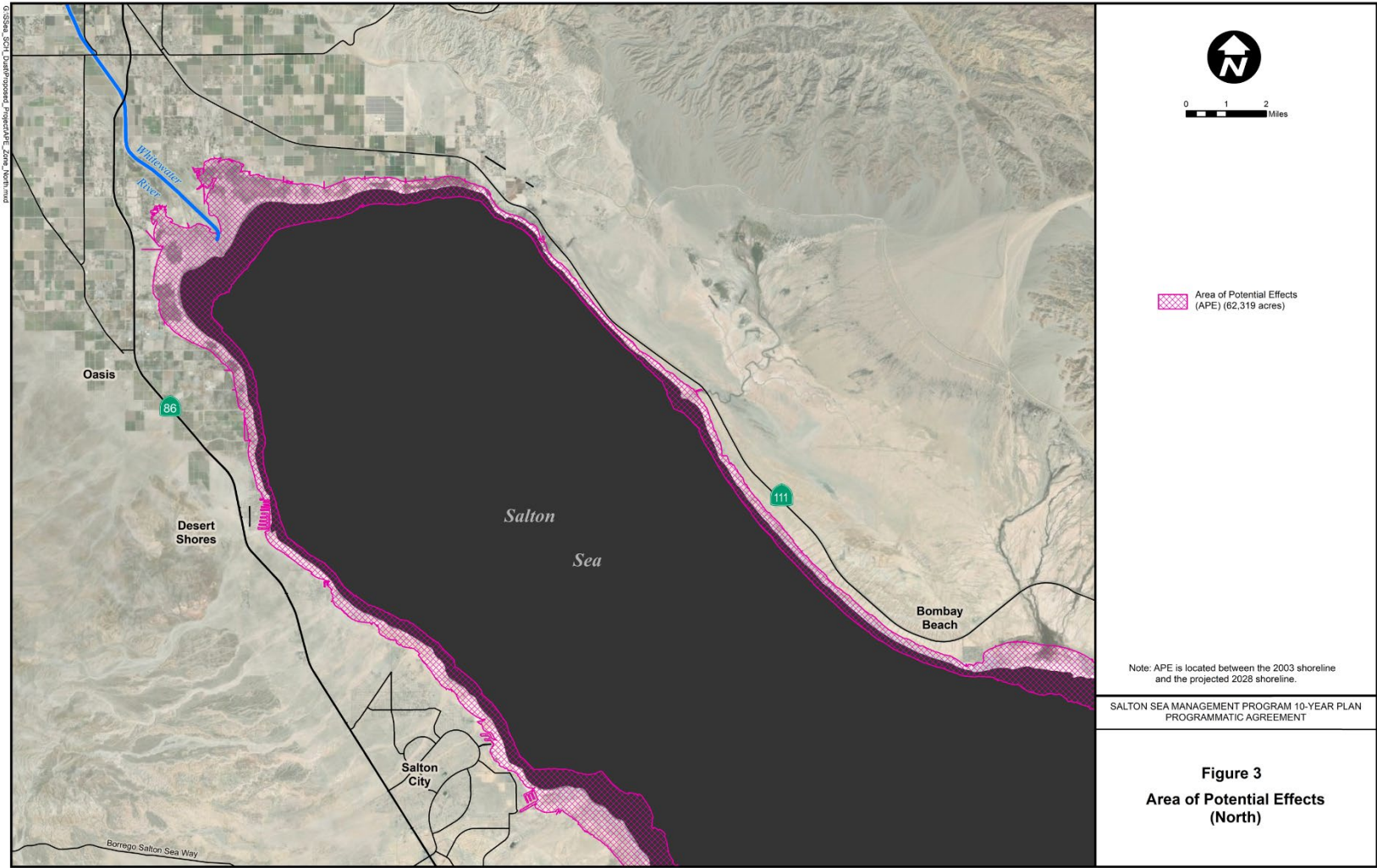


Figure 3 -APE Map for North Salton Sea

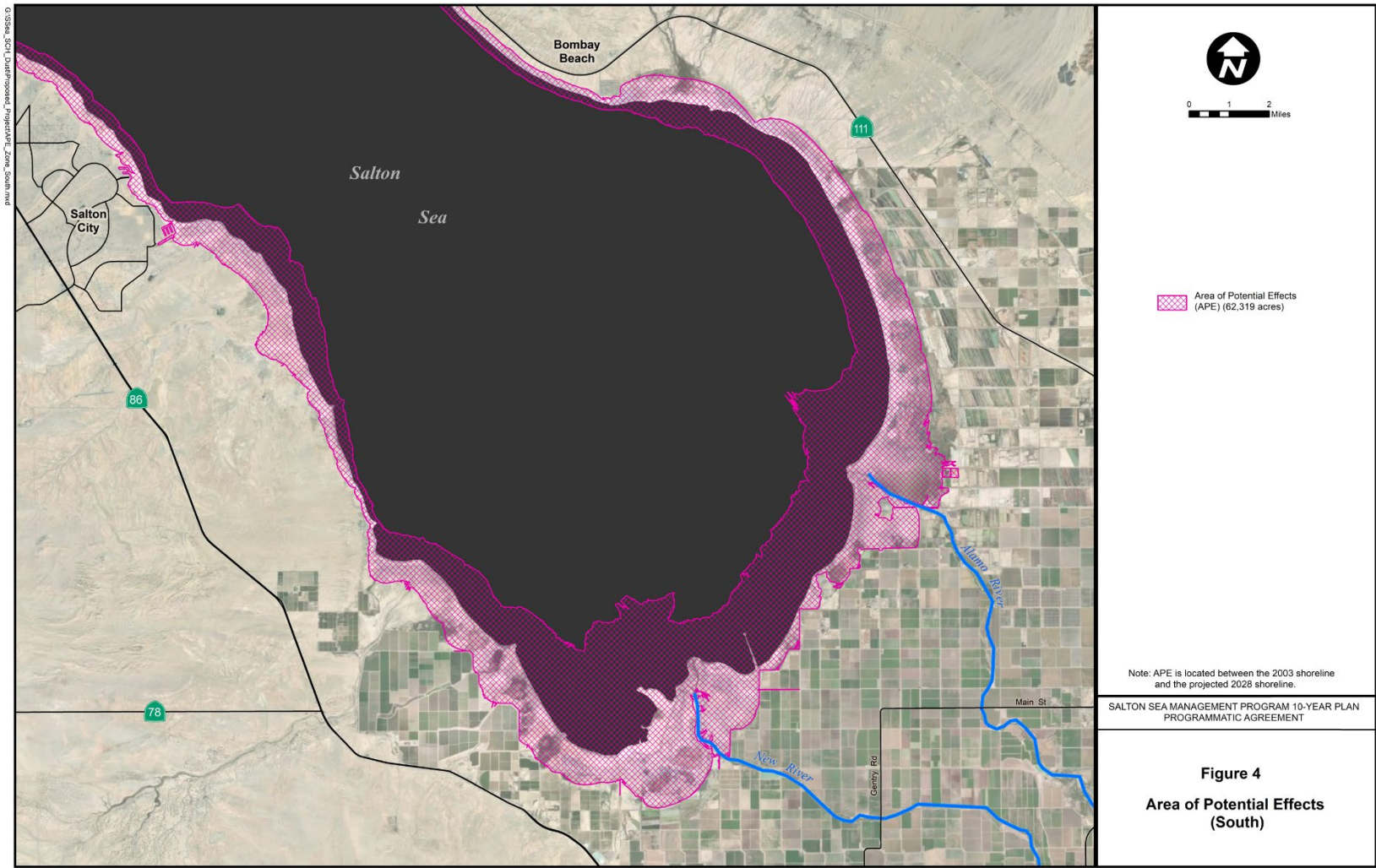


Figure 4 - APE Map for South Salton Sea

LIST OF ACTIVITIES IN THE UNDERTAKING

| Activity Type | Construction Features (Could include any combination of these features) |
|--|---|
| Data collection to support aquatic habitat and dust suppression and restoration projects | Geotechnical investigations, soil sampling, installing stream gauges, drone flyovers and other activities that are necessary to inform project locations, design, and construction |
| <p>Construct aquatic habitat ponds</p> <p>Proposed aquatic habitat ponds would provide suitable water quality and physical conditions to support a variety of aquatic habitats, including mudflats/shallow-water saline habitat, mid-depth habitat, and deep-water habitat. They would incorporate fresh and saline water in amounts that provide salinity ranges to support fish species not able to survive in the increasingly saline Sea.</p> | <p>Boat ramp for project maintenance</p> <p>Bottom hard substrate</p> <p>Breakwater for construction</p> <p>Check dam</p> <p>Drain interception canals</p> <p>Earthen berms and hard substrate on berms</p> <p>Electrical distribution lines to support project components</p> <p>Flood control</p> <p>Groundwater monitoring wells and supply wells</p> <p>Habitat islands</p> <p>Operational facilities</p> <p>Public amenities, recreation access</p> <p>Roads</p> <p>Seasonal flooding</p> <p>Snags or other vertical structures</p> <p>Staging areas</p> <p>Swales or channels</p> <p>Vegetation removal (permanent or temporary)</p> <p>Water conveyance and supply system: sedimentation/mixing basins, pipelines, pumps, weirs, and other structures in waterways to divert water</p> |
| <p>Construct permanent vegetated wetlands</p> <p>Vegetated wetlands would have water depth less than 3 feet. Hydrology for wetlands could be unmanaged or</p> | <p>Check dam</p> <p>Earthen berms and hard substrate on berms</p> <p>Groundwater monitoring wells and supply wells</p> |

| Activity Type | Construction Features (Could include any combination of these features) |
|---|---|
| managed to be seasonally or permanently wet. | Operational facilities |
| | Public amenities, recreation access |
| | Roads |
| | Staging areas |
| | Swales or channels |
| | Temporary vegetation removal |
| | Water conveyance and supply system: sedimentation/mixing basins, pipelines, pumps, weirs, and other structures in waterways to divert water |
| | |
| Dust Suppression Activities | |
| Surface roughening | Furrows |
| | Soil binders |
| Dust suppressants or surface stabilizers | Surfactant materials (e.g., organic, mineral, or engineered polymers) |
| | Fence |
| Sand fencing | Straw bales |
| Engineered roughness | Gravel |
| Gravel and other cover | Geotextile base |
| | Agricultural biproducts (e.g., bales, mulch) |
| | Biocementation |
| Soil crust enhancement | Abiotic amendments |
| | Water conveyance to utilize Salton Sea water |
| | Furrows |
| Vegetation establishment | <p>Water conveyance and supply system: sedimentation/mixing basins, pipelines, pumps, weirs, and other structures in waterways to divert water</p> <p>Groundwater wells</p> <p>Swales and furrows</p> |

| Activity Type | Construction Features (Could include any combination of these features) |
|---|---|
| | Planting beds (e.g., discing, seeding, agricultural practices to establish vegetation) |
| | Earthen berms and hard substrate on berms |
| Shallow-Water Habitat Dust Suppression | Groundwater monitoring wells and supply wells |
| | Habitat islands |
| | Staging areas |
| | Vegetation removal |
| | Water conveyance and supply system: sedimentation/mixing basins, pipelines, pumps, weirs, and other structures in waterways to supply water |
| | Earthen berms and hard substrate on berms |
| Shallow flooding | Groundwater monitoring wells and supply wells |
| | Shallow earthen berms |
| | Staging areas |
| | Water conveyance and supply system: sedimentation/mixing basins, pipelines, pumps, weirs, and other structures in waterways to supply water |
| | Groundwater monitoring wells and supply wells |
| | Check dams |
| Stormwater spreading | Compost socks |
| | Earthen, rock, gravel, or other types of berms |
| | Furrows |
| | Staging areas |
| | Water conveyance and supply system: sedimentation/mixing basins, pipelines, pumps, weirs, and other structures in waterways to supply water |