



**US Army Corps  
of Engineers** ®  
Los Angeles District



---

**RIO HONDO UPPER 5 LEVEE SYSTEM**  
**LOS ANGELES COUNTY, CALIFORNIA**  
**NLD SYSTEM ID # 3805010103**

**PERIODIC INSPECTION REPORT NO 1**  
**GENERALIZED EXECUTIVE SUMMARY**

**FINAL SYSTEM RATING: MINIMALLY ACCEPTABLE**  
**FINAL RATING DATE: OCTOBER 8, 2014**

PERIODIC INSPECTION REPORT PREPARED BY PRAAD/GENTERRA/TABER, LLC  
FOR THE U.S. ARMY CORPS OF ENGINEERS, LOS ANGELES DISTRICT

SUBMITTED: MARCH 2014  
INSPECTED: JUNE 26, 2013

## **EXECUTIVE SUMMARY**

This Executive Summary provides an introduction to the periodic inspection, an overview of the system, a summary of the major findings of the periodic inspection, and the overall rating for the system.

### **1.1 Scope and Purpose of Periodic Inspection**

The purpose of the Rio Hondo Upper 5 Levee System (RHU5) periodic inspection is to identify deficiencies that pose hazards to human life or property. The inspection report summarizes the identified deficiencies in order to facilitate future studies and associated repairs, as appropriate.

This assessment of the general condition of the levee system is based on available data and visual inspections. Detailed investigation and analysis involving hydrologic design, topographic mapping, subsurface investigations, testing, and detailed computational evaluations are beyond the scope of this levee system inspection.

### **1.2 System Summary**

The Rio Hondo Upper 5 Levee System is located in the cities of El Monte, in Los Angeles County, in the State of California. The National Levee Database (NLD) shows the RHU5 along the right (northwest) bank of the Upper Rio Hondo Channel, from STA. 832+00 (Peck Road Spreading Basin) to STA. 808+00 (approximately 135 feet northeast of Santa Anita Avenue Bridge), with a total length of about 0.46 miles (about 2,429 feet). Figure 1.1 shows the RHU5 extents and leveed area.

RHU5 is aligned parallel to the Rio Hondo Channel, which is a trapezoidal-shaped channel that has concrete-lined slopes and a concrete channel bottom constructed over a compact subgrade. RHU5 includes side drainage structures and a subdrain system.

RHU5 improvements were federally authorized by the Flood Control Act of 1950 and were federally constructed by 1959.

RHU5 consists of one segment and is operated by the Los Angeles County Department of Public Works (LACDPW).

### **1.3 Summary of Major Deficiencies Found**

RHU5 was inspected on June 26, 2013 by the PGT inspection team. LACDPW and the USACE representatives were also present at the inspection. Each observed item during the site inspection was rated as Unacceptable, Minimally Acceptable, or Acceptable. During the period inspection of the system, several deficiencies of concern were rated as Unacceptable for which remedial actions are required. The following major deficiencies (Unacceptable items) were noted during the periodic inspection of the project features:

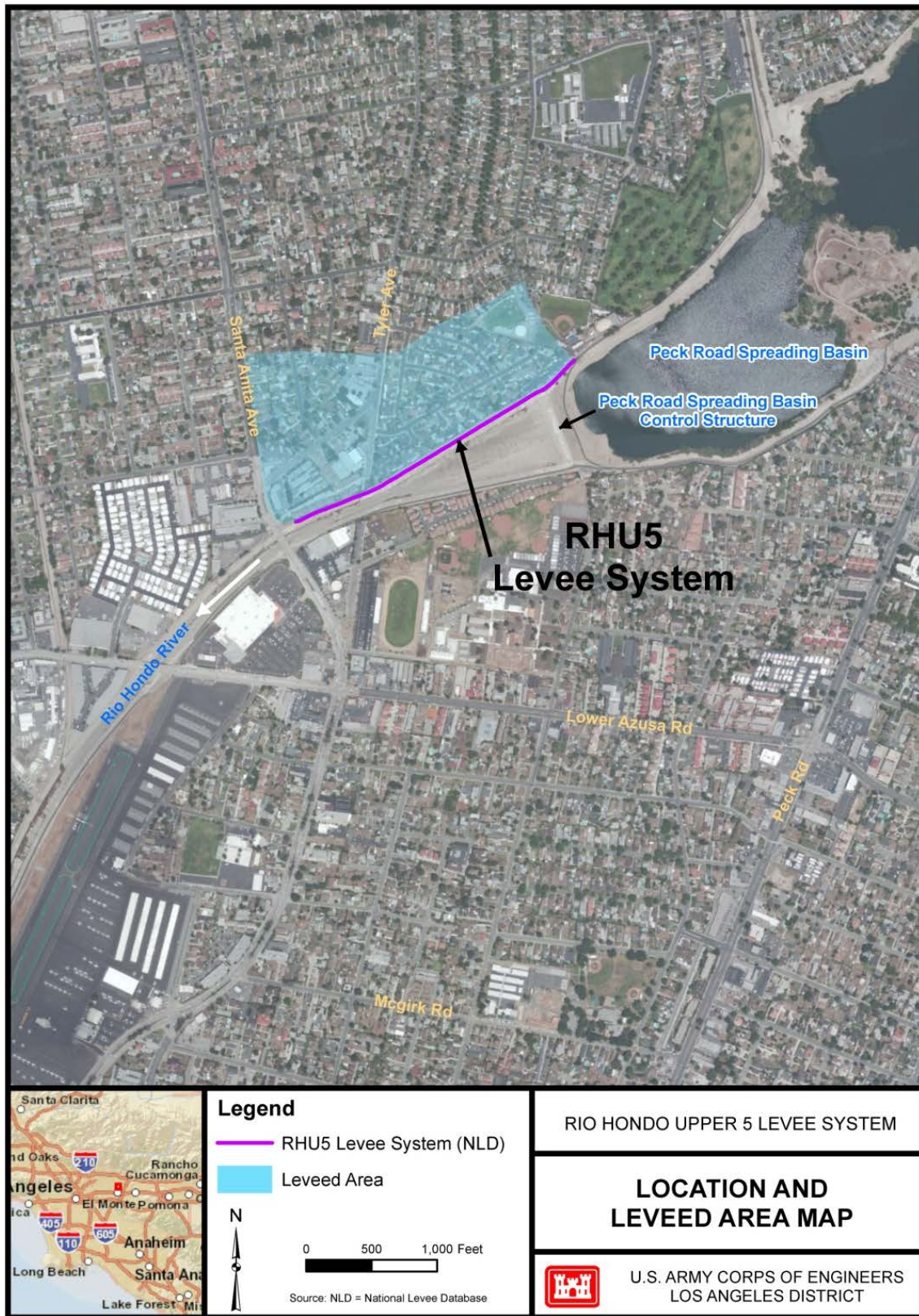
- Large trees and significant vegetation growth on the landside/riverside levee slopes within the vegetation free zone;
- An approved USACE permit could not be located for unpermitted structures and fences within the levee right-of-way;
- Several occurrences of erosion on the landside slope;
- Local depressions and voids beneath concrete slope and crown paving;
- Side drains were observed in the field that are not on As-Built plans and no approved USACE permits were found;
- Side drains that have not been video inspected or their inspection documentations was not provided; and,
- Concrete deterioration, several spalling, and voids, which could threaten the integrity of the channel lining.

#### **1.4 Overall Rating**

The Levee Safety Out-Brief Meeting was held on November 14, 2013. An engineering determination as to the overall levee rating was made for this levee system. The Rio Hondo Upper 5 Levee system is rated as “Minimally Acceptable.”

*A “Minimally Acceptable” system rating is where one or more items are rated as Minimally Acceptable or one or more items are rated as Unacceptable and an engineering determination concludes that the Unacceptable items would not prevent the segment / system from performing as intended during the next significant runoff event.*

The local sponsor will be notified of the overall rating of the levee system by letter with instructions to correct the Unacceptable rated items immediately, and to correct the Minimally Acceptable rated items within two years so that they do not deteriorate further and become Unacceptable.



**Figure 1. Rio Hondo Upper 5 Levee System**