



# Camp Elliott - East Elliott

Project Number: J09CA006703

U.S. ARMY CORPS OF ENGINEERS

BUILDING STRONG®

Fact Sheet

Summer 2018

## Overview

Camp Elliott - East Elliott is located approximately 12 miles northeast of downtown San Diego, California. The site encompasses 3,035.5 acres in the cities of San Diego and Santee and is bordered by the Marine Corps Air Station, Miramar, to the north and west.

The U.S. Army Corps of Engineers is the organization responsible for environmental remediation of properties that were formerly owned by, leased to or otherwise possessed by the Department of Defense and transferred from DoD control prior to October 17, 1986. These properties are known as Formerly Used Defense Sites.

The Army Corps of Engineers divided the former Camp Elliott into four project areas: Tierrasanta; Mission Trails; East Elliott; and Areas D, G and H. Investigations at East Elliott for hazards from military munitions began in 1991.

Since hazards from military munitions may remain, the Army Corps of Engineers encourages you to make safety a priority by following the 3Rs of Explosives Safety: (1) **Recognize** when you may have encountered a munition and that munitions are dangerous; (2) **Retreat**, do not approach, touch, move or disturb it, but carefully leave the area; and (3) **Report** call 911 and advise the police of what you saw and where you saw it.

## History

In 1934, the U.S. Marine Corps leased 19,298 acres of land in San Diego County for artillery, antiaircraft and machine gun training. Camp Elliott was later expanded to 30,500 acres and housed the 2nd Marine Division.

DoD records indicate tank and anti-tank firing exercise ranges originated in the central and western portions of Camp Elliott (currently the Marine Corps Air Station, Miramar, and the Tierrasanta project area). The ranges pointed to the north and east toward East Elliott. Maneuver, combat and musketry training exercises occurred in East Elliott.

In 1944, the Marine Corps moved training from Camp Elliott to Camp Pendleton, and the U.S. Navy

gained control of the property. The Navy used Camp Elliott as a Training and Redistribution Center until 1953. No live-fire weapons training was conducted. From 1953 until Camp Elliott closed in 1960, the Navy and Marine Corps used Camp Elliott for various purposes.

When Camp Elliott closed in 1960, the property was divided and Naval Air Station, Miramar (currently Marine Corps Air Station, Miramar) obtained 7,709 acres; the U.S. Air Force obtained 2,691 acres; and approximately 15,000 acres, including East Elliott, were declared surplus by DoD.

By 1974, the surplus land from Camp Elliott was transferred to other governmental agencies or private parties.



*An M3 light tank of the 2nd Tank Battalion during Maneuvers at Camp Elliott in 1941.*

*Source: U.S. Marine Corps*

U.S. ARMY CORPS OF ENGINEERS – LOS ANGELES DISTRICT

915 Wilshire Blvd., 13th Floor • Los Angeles, CA 90017 • Phone: 213-452-3921

Email: publicaffairs.spl@usace.army.mil • Website: www.spl.usace.army.mil

# Site Investigation

The Army performed ordnance surveys on portions of East Elliott in 1984. Munitions debris were identified during the operation.

In 1991, an Inventory Project Report was completed, which established East Elliott as a Formerly Used Defense Site and documented the potential risks.

Ordnance and explosives removal actions were conducted in 1994, 1996, 1998, 2003, 2006 and 2007. Military munitions were identified and disposed of.

The 1995 Archives Search Report contains historical records, field data, an assessment of the potential presence of munitions and recommendations for future investigations.

The 1999 Engineering Evaluation and Cost Analysis presented a characterization of the site, assessment of potential risks and evaluation of removal action alternatives. Clearance activities were recommended.

In 2018, the Remedial Investigation / Feasibility Report was finalized. The investigation was conducted to determine the potential for military munitions to remain at the site. Although no munitions were encountered, the Army Corps of Engineers determined munitions could potentially be present throughout a large portion of the site.

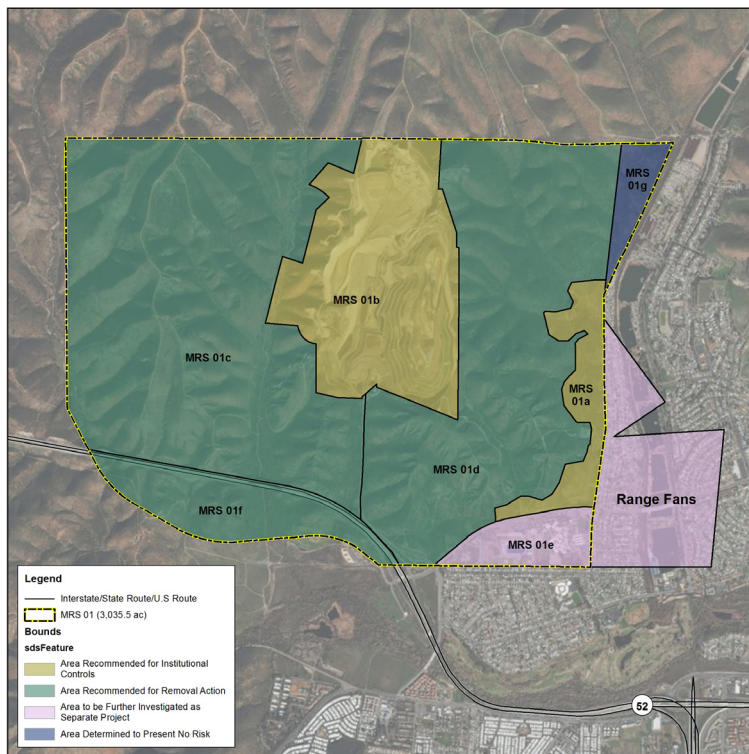
Seven sub-areas (01a through 01g) were identified during the investigation. Sub-area 01e along

with a newly identified range fan area was recommended for a separate evaluation. Sub-area 01g was determined to have no historical use and was recommended for No Action. Limited investigations were conducted in the remaining areas and munitions were only found in sub-area 01d. The Army Corps of Engineers determined munitions could potentially be present.

During the Feasibility Study, seven remedial alternatives were identified and evaluated for sub-areas 01a, 01b, 01c, 01d, and 01f.

Based on the previous findings, a Proposed Plan was prepared that presents the recommended remedial alternatives for each sub-area.

## Map of Camp Elliott - East Elliott Project



## Follow the 3Rs of Explosives Safety

Hazards from military munitions may still remain within the former camp. Protect yourself by following the 3Rs of Explosives Safety:

- R**ecognize  
when you may have encountered a munition and that munitions are dangerous.
- R**etreat  
do not approach, touch, move or disturb it, but carefully leave the area.
- R**eport  
call 911 and advise police of what you saw and where you saw it.



**US Army Corps of Engineers**  
Los Angeles District

## FOR MORE INFORMATION

Contact the U.S. Army Corps of Engineers, Los Angeles District Public Affairs Office at 213-452-3921 or [publicaffairs.spl@usace.army.mil](mailto:publicaffairs.spl@usace.army.mil). To learn more about the FUDS Program, visit [www.fuds.mil](http://www.fuds.mil).

