

Mojave Gunnery Range “C”

Overview

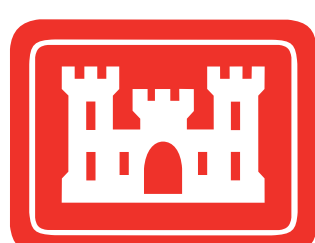
The Mojave Gunnery Range “C” Formerly Used Defense Site (FUDS) is located in Kern County, California, and overlaps the southwestern corner of California City.

The U.S. Army Corps of Engineers is the organization responsible for environmental remediation of properties that were formerly owned by, leased to or otherwise possessed by the Department of Defense and transferred from DOD control prior to Oct. 17, 1986. These properties are known as FUDS.

The U.S. Army Corps of Engineers is performing Remedial Action activities at the following three project areas known as Munitions Response Sites or MRSs within Mojave Gunnery Range “C” FUDS:

- MRS 04, which comprises 289 acres, is mostly managed by the Bureau of Land Management with small portions being privately owned.
- MRS 06, which comprises 41 acres, is privately owned land.
- MRS 07, which comprises 163 acres, is privately owned land.

*U.S. Marine Corps flight and ground crew in front of an F4U Corsair airplane. c. 1943.
Source: Land~Sea Discovery Group collection via Mojave Virtual Museum, www.mojave.ca.us.*



**US Army Corps
of Engineers**
Los Angeles District

History

In August 1944, the Department of the Navy acquired approximately 22,400 acres of desert land near Mojave, California, to conduct training in aerial bombing, strafing (firing of automatic weapons from aircraft onto ground targets), and air-to-ground rocketry.

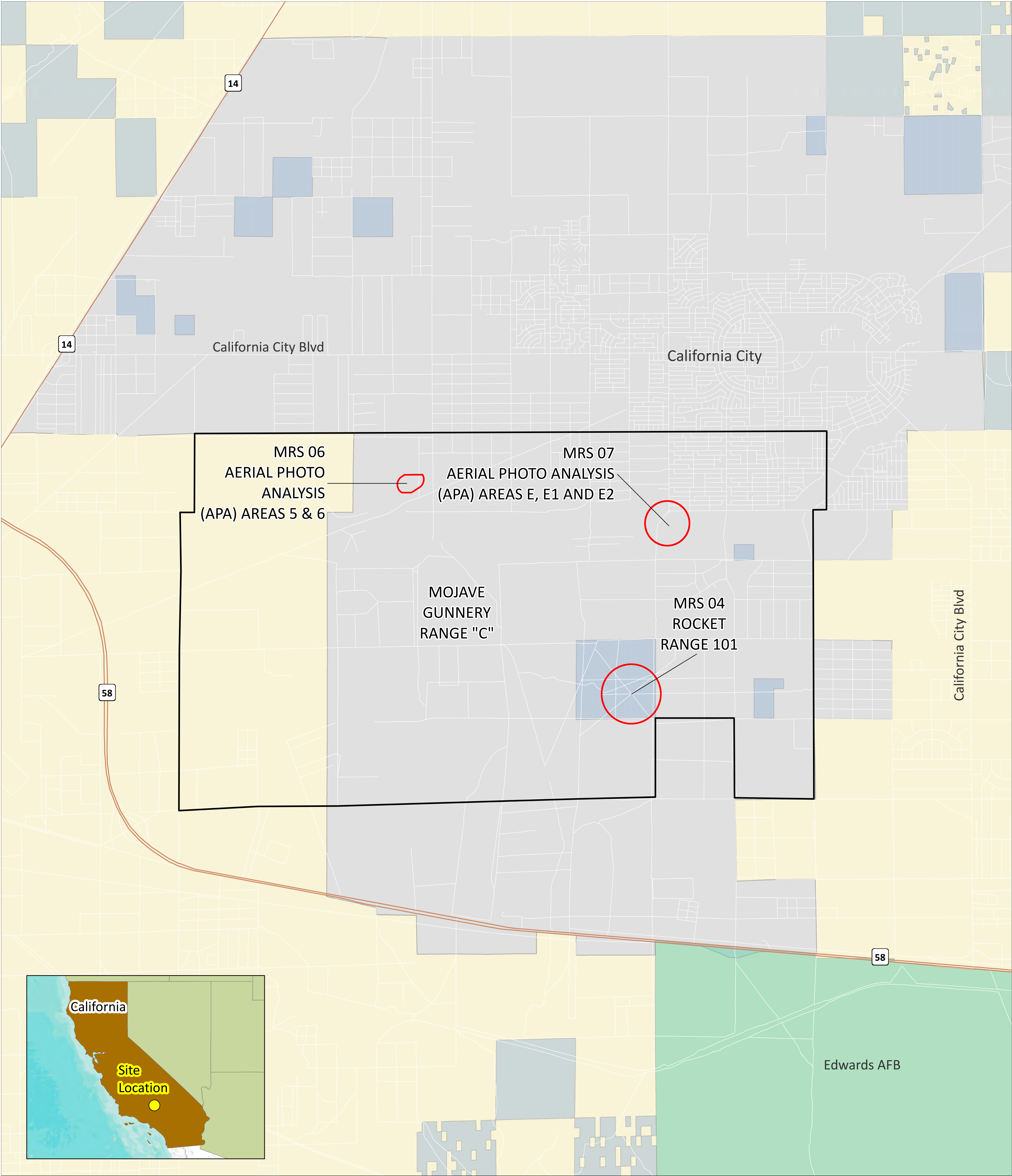
The range was primarily used by aircraft stationed at Marine Corps Air Station Mojave. It consisted of seven targets, one mobile and six stationary targets.

Following World War II, the gunnery range was used for testing and evaluating pilot-less aircraft by both Naval Air Station Mojave and the Army.

Historical records indicate that MRS 04 was used for rocket firing and other air-to-ground training, such as aerial bombing. MRS 06 contains two targets that were used for bombing, rocket and other air-to-ground training. MRS 07 was a bombing target used for bombing and other air-to-ground training.



Mojave Gunnery Range “C” Map



Legend

- FUDS Property Boundary
- FUDS Project Boundary
- Bureau of Land Management
- California City
- Department of Defense

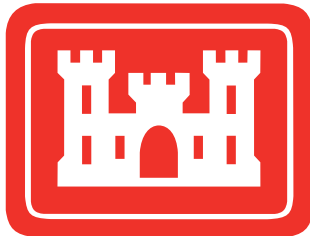
Sources: USACE, 2018; DISDI, 2017; BLM, 2017; Esri, 2017; USCB, 2017

0 1 2 Miles



MOJAVE GUNNERY RANGE "C"

MRS 04 Rocket Range 101
MRS 06 Aerial Photo (APA) Areas 5 & 6
MRS 07 Aerial Photo Analysis (APA) Areas E, E1 and E2
FUDS Property No.: J09CA7281
Project Nos.: 04, 06, and 07



**US Army Corps
of Engineers**
Los Angeles District



Remedial Action Activities

The 2018 Decision Document identifies the Army Corps of Engineers Remedial Alternative as Removal of Military Munitions from the Surface with Institutional Controls to Protect Current and Future Site Users.

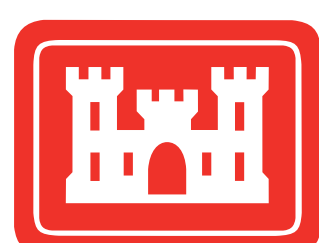
To accomplish this alternative the following actions will be implemented:

- Biological and cultural surveys will be conducted to identify areas with sensitive species, such as the desert tortoise, and historical sites that may need to be protected during clearance activities.
- Vegetation that is thick in density, making areas inaccessible, will be trimmed to accommodate clearance activities.
- Instrument-aided surface clearance activities will be conducted to remove munitions and explosives of concern and/or munitions debris that are located or visible on the ground, including partially buried items.
- All military munitions (i.e., Munitions and Explosives of Concern) that are encountered will be safely disposed of/detonated on site.



*Example of field clearance activities.
Source: U.S. Army Corps of Engineers.*

In addition to the surface removal, the Army Corps of Engineers will conduct community education activities. These activities will include distributing educational materials to landowners and community members. The materials will contain information about Mojave Gunnery Range “C,” its previous military use, and the steps to follow if individuals come across any potential munitions items. The steps are known as the 3Rs of Explosives Safety.



**US Army Corps
of Engineers®**
Los Angeles District



3Rs of Explosives Safety

Debris from military use, such as unexploded munitions, may be present at the Mojave Gunnery Range "C" Formerly Used Defense Site. The U.S. Army Corps of Engineers recommends that all landowners and visitors learn and follow the 3Rs of Explosives Safety – Recognize, Retreat and Report.



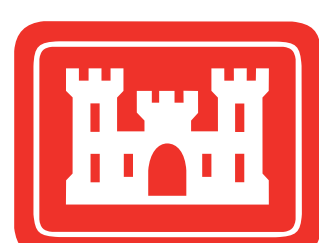
when you may have come across a munition, and that munitions are dangerous.



do not approach, touch, move or disturb it, but carefully leave the area.



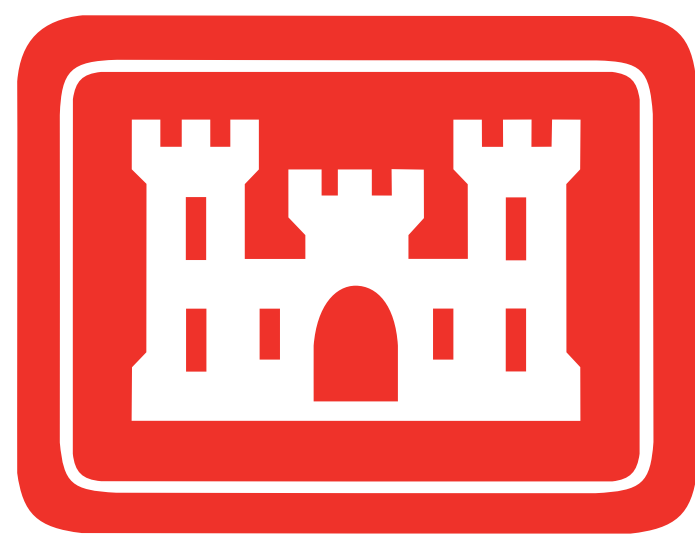
call 911 and advise the police of what you saw and where you saw it.



US Army Corps
of Engineers®
Los Angeles District



Contact Information



**US Army Corps
of Engineers®**
Los Angeles District



Randy Tabije
Project Manager

U.S. Army Corps of Engineers, Los Angeles District
Prado Dam Field Office
2493 Pomona-Rincon Rd
Corona, CA 92880
Phone: 951-898-6144
Email: fuds.spl@usace.army.mil

Brooks Hubbard
Public Affairs Specialist

U.S. Army Corps of Engineers, Los Angeles District
915 Wilshire Blvd, Suite 115
Los Angeles, CA 90017
Phone: 213-452-3921
Email: publicaffairs.spl@usace.army.mil