



FORMER SAHUARITA AIR FORCE RANGE

Remedial Investigation/Feasibility Study

BUILDING STRONG.

U.S. ARMY CORPS OF ENGINEERS

The U.S. Army Corps of Engineers (USACE), Los Angeles District (CESPL) is performing a Remedial Investigation/Feasibility Study (RI/FS) at the former Sahuarita Air Force Range (SAFR) located in Pima County, Arizona.

Site Description - The former SAFR was comprised of approximately 27,000 acres (Ac.) and is located in the Pima County, approximately 17 miles south of Tucson, Arizona and contains three (3) munitions response sites (MRSs). Range Complex number (No.) 1 MRS is approximately 1,391 Ac., consisting of three subranges: Bombing Target No. 01, Bombing Target No. 04, and Air-to-Ground Range No. 01, located in the northern portion of the former SAFR. Range Complex No. 2 MRS is approximately 7,929 Ac., consists of two subranges, an Air-to-Ground Target Range No. 02 and an unpiloted (O) radio-controlled (Q) flying target (OQ) Range, which is a ground-to-air range, located in the central part of the SAFR. Range Complex No. 3 MRS is approximately 1,247 Ac., consists of Bombing Target No. 02 and Bombing Target No. 03 and is located in the southern portion of SAFR. Access to the former military installation is unrestricted and is primarily used as vacant land, recreational activities, and residential housing; however, no residents have been observed within the boundaries of the MRSs.



Site History – The former SAFR was established as a pattern bombing range in support of the Davis-Monthan Air Force Base (AFB) and utilized as a former training range from 1942 to 1958. Improvements to SAFR included 12 buildings, 4 observation towers, a 5,400-foot runway, a rotary launcher, and miscellaneous structures and utilities. No munitions and explosives of concern (MEC) have been observed at the site. However numerous munitions debris (MD) items have been identified, including 100-pound and 500-pound practice bombs, 20 millimeter (mm) projectiles, high explosive (HE) projectiles, HE bomb fragments, and small arms ammunition (SAA) (e.g., .30 and .50 caliber).

Investigation Summary – An RI/FS will be conducted at three former Sahuarita Air Force Range MRSs under the Military Munitions Response Program (MMRP). The MMRP was established by congress, to address sites that may contain Unexploded Ordnance (UXO), Discarded Military Munitions (DMM), or Munitions Constituents (MC). Site Inspection (SI) field activities were conducted at the site in January 2007. SI activities included qualitative reconnaissance (QR) and MC sampling of soil and groundwater. Based on the SI, further investigation was warranted at the site to determine the nature and extent of MEC and MC contamination.

An RI/FS is performed to gather enough information to determine which remedy for an MRS would be most effective. RI activities will include a geophysical investigation for MEC and sampling soil and groundwater for MC contamination. Data collected during the RI will be utilized to characterize the nature and extent of MEC and MC contamination at the site and to determine if remedial actions are required. Remedial actions will be evaluated through a Feasibility Study.

U.S. ARMY CORPS OF ENGINEERS LOS ANGELES DISTRICT
915 Wilshire Boulevard, Los Angeles, CA 90017-3401
Mr. Jay Field (213) 452-3920
Thomas.J.Field@usace.army.mil



FORMER SAHUARITA AIR FORCE RANGE Remedial Investigation/Feasibility Study

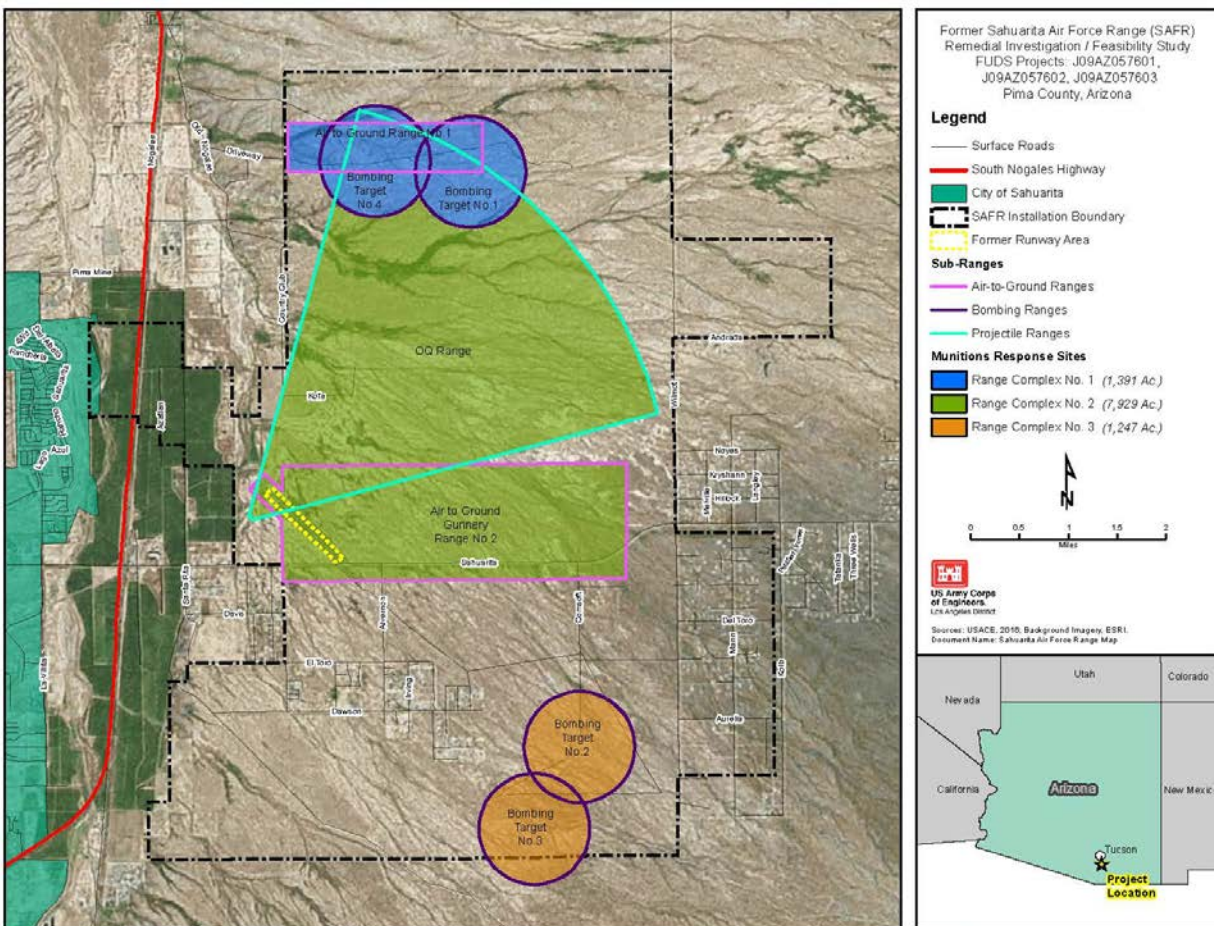
CERCLA Process - The RI/FS will include various activities, such as:

- Technical Project Planning;
- An RI Uniform Federal Policy for Quality Assurance Project Plan (UFP-QAPP) describing RI Field Activity methodologies; and
- An RI/FS Report that documents the findings of the RI field activities and evaluates potential remedial action alternatives for each MRS, if warranted.

A Proposed Plan that describes the possible cleanup alternatives that the Government is considering for each MRS will follow the RI/FS. A Decision Document which details the cleanup actions to be taken by the Government will follow the Proposed Plan.

Community Relations Support, including the completion of a Community Relations Plan and the creation of an Administrative Record will be part of the CERCLA activities.

The project is expected to be completed by 2020. For more information regarding the RI/FS, please contact the **CESPL Public Affairs Office** in Los Angeles, California, at (213) 452-3717.



U.S. ARMY CORPS OF ENGINEERS LOS ANGELES DISTRICT
915 Wilshire Boulevard, Los Angeles, CA 90017-3401
Mr. Jay Field (213) 452-3920
Thomas.J.Field@usace.army.mil