



**US Army Corps  
of Engineers** ®  
Los Angeles District



---

---

# **CUCAMONGA CREEK 2 LEVEE SYSTEM**

## **SAN BERNARDINO COUNTY, CALIFORNIA**

### **NLD SYSTEM ID # 3805010043**

**PERIODIC INSPECTION REPORT NO 1**  
**GENERALIZED EXECUTIVE SUMMARY**

**FINAL SYSTEM RATING: MINIMALLY ACCEPTABLE**  
**FINAL RATING DATE: MARCH 27, 2013**

PERIODIC INSPECTION REPORT PREPARED BY TETRA TECH, INC.  
FOR THE U.S. ARMY CORPS OF ENGINEERS, LOS ANGELES DISTRICT

SUBMITTED: FEBRUARY 2013  
INSPECTED: APRIL 20, 2010

## EXECUTIVE SUMMARY

This Executive Summary provides an introduction to the periodic inspection, an overview of the system, a summary of the major findings of the periodic inspection, and the overall rating for the system.

### 1.1 Scope and Purpose of Periodic Inspections

The purpose of this levee system periodic inspection is to identify deficiencies that pose hazards to human life or property. The inspection is intended to identify the issues in order to facilitate future studies and associated repairs as appropriate.

This assessment of the general condition of the levee system is based on available data and visual inspections. Detailed investigation and analysis involving hydrologic design, topographic mapping, subsurface investigations, testing, and detailed computational evaluations is beyond the scope of this levee system inspection.

### 1.2 System Summary

Cucamonga Creek 2 Levee System is located in the City of Ontario, in the County of San Bernardino, in the State of California. Cucamonga Creek 2 Levee System is a reinforced concrete rectangular channel with backfill behind the channel wall. The backfill behind the channel wall was treated as a levee embankment for inspection and reporting purposes. According to the National Levee Database, Cucamonga Creek 2 Levee System forms the right/west bank of a continuous concrete channel (looking downstream) from slightly downstream of East Riverside Drive to Remington Avenue, a total distance of 15,059 feet. The inspection limits were later redefined by the United States Army Corps of Engineers (USACE) to include only portions of the channel that had a levee embankment on the landward side. The inspection limits were redefined to extend from Chino Avenue to Schaefer Avenue, a total length of 2,700 feet. The updated Cucamonga Creek 2 Levee System inspection limits are shown in Figure 1. The National Levee Database Number for Cucamonga Creek 2 Levee System is 3805010043. This report focuses only on the updated inspection limits from Chino Avenue to Schaefer Avenue. The San Bernardino County Flood Control District (SBCFCD) is the Local Sponsor for this system.

### 1.3 Summary of Major Deficiencies Found

The levee system was inspected on April 20, 2010. During the inspection of the levee system, several deficiencies were noted for which remedial actions are required. The following main deficiencies were noted during the inspection of the project features:

- Levee Embankments
  - Significant erosion is occurring along the landward levee slope. Several rills with depths of roughly 2 feet were found. Depressions greater than 6 inches deep were also found along the levee crown at several channel-wall joints.
  - There are no maintenance records which indicate that the subdrainage system has been regularly cleaned.

- Interior Drainage System
  - Approximately 25% of the 48-inch-diameter RCP side-drain-junction structure inlet was blocked by vegetative debris.
  - There are no records of the pipes having been videotaped by television camera or other visual-inspection method.
- Flood Damage Reduction Channels
  - Vegetation is growing between the monolith panels, compromising the integrity of the joint material.

#### **1.4 Overall Rating**

The Levee Safety Officer, Los Angeles District, has determined the overall system rating of Cucamonga Creek 2 Levee System to be “Minimally Acceptable.” A “Minimally Acceptable” system rating is defined as:

*A Minimally Acceptable System is where one or more items are rated as Minimally Acceptable or one or more items are rated as Unacceptable and an engineering determination concludes that the Unacceptable items would not prevent the segment/system from performing as intended during the next flood event.*

The Local Sponsor will be notified of the overall rating of the levee system by letter with instructions to correct the “Unacceptable” rated items as soon as possible, and to correct the “Minimally Acceptable” rated items within two years so that they do not deteriorate further and become “Unacceptable.”

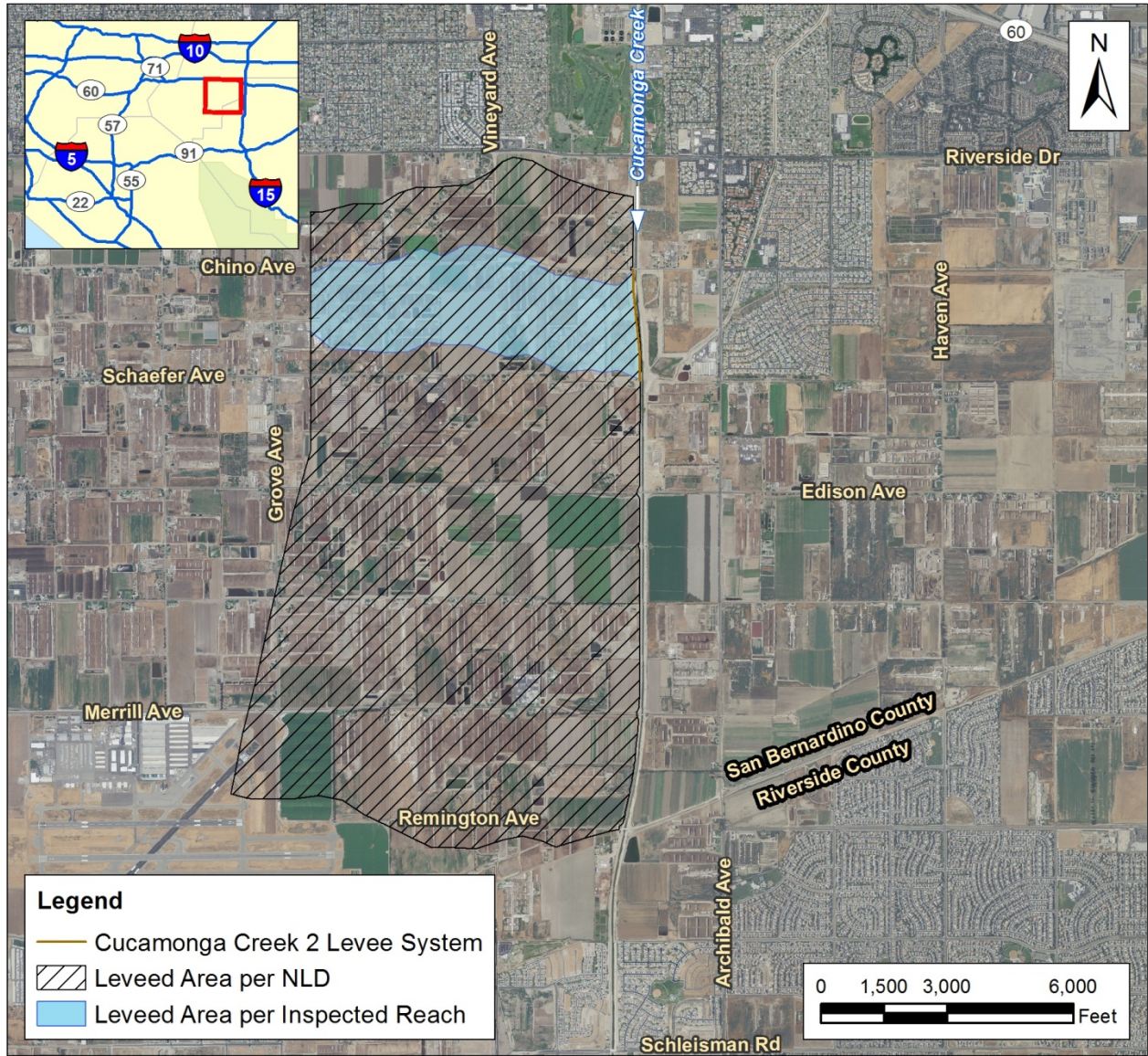


Figure 1. Cucamonga Creek 2 Levee System