



**US Army Corps
of Engineers** ®
Los Angeles District



**DEVIL CREEK DIVERSION
LEVEE SYSTEM
SAN BERNARDINO COUNTY, CALIFORNIA
NLD SYSTEM ID # 3805010083**

**PERIODIC INSPECTION REPORT NO 1
GENERALIZED EXECUTIVE SUMMARY**

**FINAL SYSTEM RATING: MINIMALLY ACCEPTABLE
FINAL RATING DATE: JANUARY 23, 2014**

PERIODIC INSPECTION REPORT PREPARED BY TETRA TECH.
FOR THE U.S. ARMY CORPS OF ENGINEERS, LOS ANGELES DISTRICT

SUBMITTED: JANUARY 2013
INSPECTED: JUNE 30, 2010

EXECUTIVE SUMMARY

This Executive Summary provides an introduction to the periodic inspection, an overview of the system, a summary of the major findings of the periodic inspection, and the overall rating for the system.

1.1 Scope and Purpose of this Periodic Inspection

The purpose of the Periodic Inspection is to identify deficiencies that pose hazards to human life or property. The inspection is intended to identify the issues in order to facilitate future studies and associated repairs as appropriate.

This assessment of the general condition of the levee system is based on available data and visual inspections. Detailed investigation and analysis involving hydrologic design, topographic mapping, subsurface investigations, testing, and detailed computational evaluations is beyond the scope of this levee system inspection.

1.2 System Summary

Devil Creek Diversion Levee System, shown on Figure 1, is located in the City of San Bernardino, in the County of San Bernardino, in the State of California. Devil Creek Diversion Levee System is a flood control improvement located along 6,845 feet of the left/south bank (looking downstream) of Devil Creek. Devil Creek Diversion Levee System was federally authorized and subsequently constructed by the United States Army Corps of Engineers (USACE). It is now entirely operated and maintained by the San Bernardino County Flood Control District (hereafter the "County"). The National Levee Database (NLD) System ID Number for the Devil Creek Diversion Levee System is 3805010083.

1.3 Field Inspection and Summary of Major Deficiencies Found

The levee system was inspected on June 30, 2010. During the inspection of the system, several deficiencies were noted for which remedial actions are required. The following main deficiencies were noted during the inspection of the project features:

Levee Embankments

- **Non-Compliant Vegetation Growth:** Significant vegetation growth (brush and tall grass) was present within the vegetation-free zone. The vegetation free zone extends 15 feet outward from both landward and riverward toes of the levee.
- **Encroachments:** Encroachments in the form of a roadway within the system right-of-way are likely to inhibit operations, maintenance, and emergency operations. Since the inspection, a permit and construction has resolved this concern. This is reflected in the final system rating.
- **Line of Protection:** The levee line of protection was not provided at the Devil Canyon Road dip crossing. Since the inspection, a permit and construction has resolved this concern. This is reflected in the final system rating.

Interior Drainage System

- **Vegetation and Obstructions:** The inlet to the diversion structure was obstructed by sediment and debris.

- **Culverts/Discharge Pipes:** The corrugated metal pipes (CMPs) associated with the diversion structure have not been visually inspected using videotaping by television camera or other visual-inspection method.
- **Flap Gates/Flap Valves/Pinch Valves:** The slide gates at two of the three inlets to the diversion structure were missing. The remaining slide gate was obstructed by sediment and debris and could not open or close.

Tetra Tech presented an out-brief concerning Periodic Inspection No. 1 to the Los Angeles District Levee Safety Officer, reviewers of the draft report, County representatives, and other interested USACE personnel. The USACE Los Angeles District has determined the overall system rating for the Devil Creek Diversion Levee System as described in section 1.4 below.

1.4 Overall System Rating

The Levee Safety Officer, Los Angeles District, has determined the overall system rating of Devil Creek Diversion Levee System to be “Minimally Acceptable.”

A Minimally Acceptable System is where one or more items are rated as Minimally Acceptable or one or more items are rated as Unacceptable and an engineering determination concludes that the Unacceptable items would not prevent the segment/system from performing as intended during the next significant runoff event.

The local sponsor will be notified of the overall rating of the levee system by letter with instructions to correct the Unacceptable rated items immediately, and correct the Minimally Acceptable rated items within two years so that they do not deteriorate further and become Unacceptable.

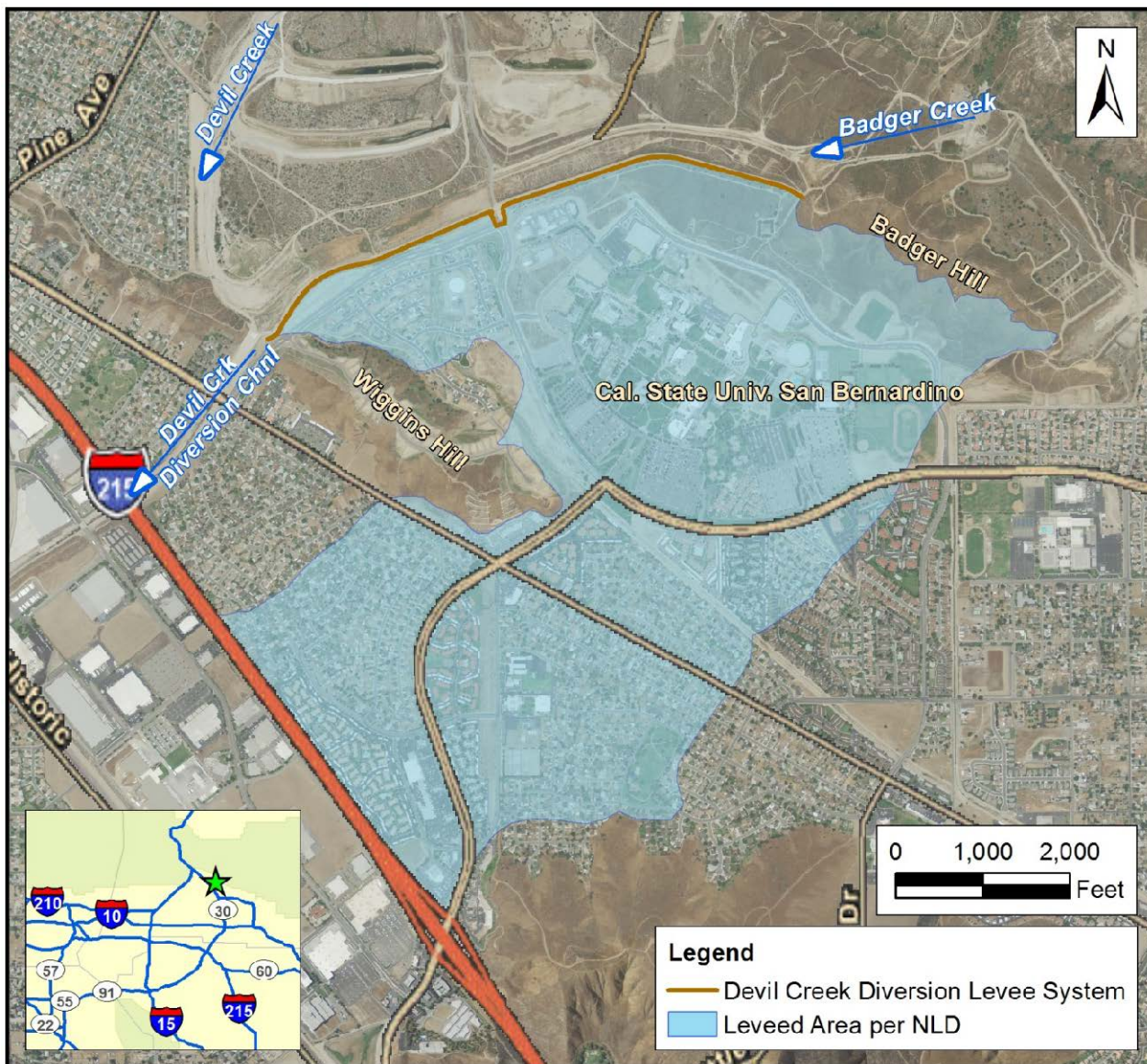


Figure 1. Devil Creek Diversion Levee System