



**US Army Corps  
of Engineers** ®  
Los Angeles District



---

---

**ORO GRANDE WASH 1 LEVEE SYSTEM**  
**SAN BERNARDINO COUNTY, CALIFORNIA**  
**NLD SYSTEM ID # 3805010091**

**PERIODIC INSPECTION REPORT NO 1**  
**GENERALIZED EXECUTIVE SUMMARY**

**FINAL SYSTEM RATING: MINIMALLY ACCEPTABLE**  
**FINAL RATING DATE: JULY 02, 2013**

PERIODIC INSPECTION REPORT PREPARED BY TETRA TECH, INC.  
FOR THE U.S. ARMY CORPS OF ENGINEERS, LOS ANGELES DISTRICT

SUBMITTED: FEBRUARY 2013  
INSPECTED: JULY 27, 2011

## **EXECUTIVE SUMMARY**

This Executive Summary provides an introduction to the periodic inspection, an overview of the system, a summary of the major findings of the periodic inspection, and the overall rating for the system.

### **1.1 Scope and Purpose of this Periodic Inspection**

The purpose of the Periodic Inspection is to identify deficiencies that pose hazards to human life or property. The inspection is intended to identify the issues in order to facilitate future studies and associated repairs as appropriate.

This assessment of the general condition of the levee system is based on available data and visual inspections. Detailed investigation and analysis involving hydrologic design, topographic mapping, subsurface investigations, testing, and detailed computational evaluations is beyond the scope of this levee system inspection.

### **1.1 System Summary**

Oro Grande Wash 1 Levee System is located in the City of Victorville, in the County of San Bernardino, in the State of California. Oro Grande Wash 1 Levee System forms a collector levee that collects runoff along the Oro Grande Wash, and then funnels this runoff into the Oro Grande Wash Channel. The inspection limits were later redefined to include a portion of the Oro Grande Wash Channel that has a levee embankment on the landward side. Thus the inspection limits were redefined to include the left/west half of the Oro Grande Wash Channel from the channel inlet to Center Street, a distance of 378 feet. The Oro Grande Wash Channel is a reinforced concrete rectangular channel, with compacted fill behind the channel wall. Of the 378 feet of channel, 27 feet has been categorized as a floodwall for inspection and reporting purposes, because the landward ground surface is lower than the top of the channel wall. The remainder of the channel was classified as a flood damage reduction channel because the landward ground surface is the same elevation as the top of the channel wall. The compacted fill behind the channel wall was treated as a levee embankment for inspection and reporting purposes. The updated Oro Grande Wash 1 Levee System inspection limits are shown on Figure 1. Oro Grande Wash 1 Levee System was federally authorized and subsequently constructed by the United States Army Corps of Engineers (USACE). It is now entirely operated and maintained by the San Bernardino County Flood Control District (SBCFCD).

### **1.2 Field Inspection and Summary of Major Deficiencies Found**

A periodic inspection of the levee system was conducted on July 27, 2011. During the inspection of the system, several deficiencies were noted for which remedial actions are required. The following main deficiencies were noted during the periodic inspection:

- The USACE has not reviewed or approved the design and construction of a new 15-inch-diameter PVC gravity sewer line located underneath the collector levee, or the alterations made to the collector levee that were made as a result of the installation of the sewer line. The impact of these modifications on the overall integrity of the levee system is unknown.

### **1.3 Overall System Rating**

The Levee Safety Officer, Los Angeles District, has determined the overall system rating of Oro Grande Wash 1 Levee System to be “Minimally Acceptable.” A “Minimally Acceptable” system rating is defined as:

*A Minimally Acceptable System is where one or more items are rated as Minimally Acceptable or one or more items are rated as Unacceptable and an engineering determination concludes that the Unacceptable items would not prevent the segment/system from performing as intended during the next flood event.*

The Local Sponsor will be notified of the overall rating of the levee system by letter with instructions to correct the “Unacceptable” rated items as soon as possible, and correct the “Minimally Acceptable” rated items within two years so that they do not deteriorate further and become “Unacceptable.”

ORO GRANDE WASH 1 LEVEE SYSTEM  
FINAL PERIODIC INSPECTION REPORT NO. 1

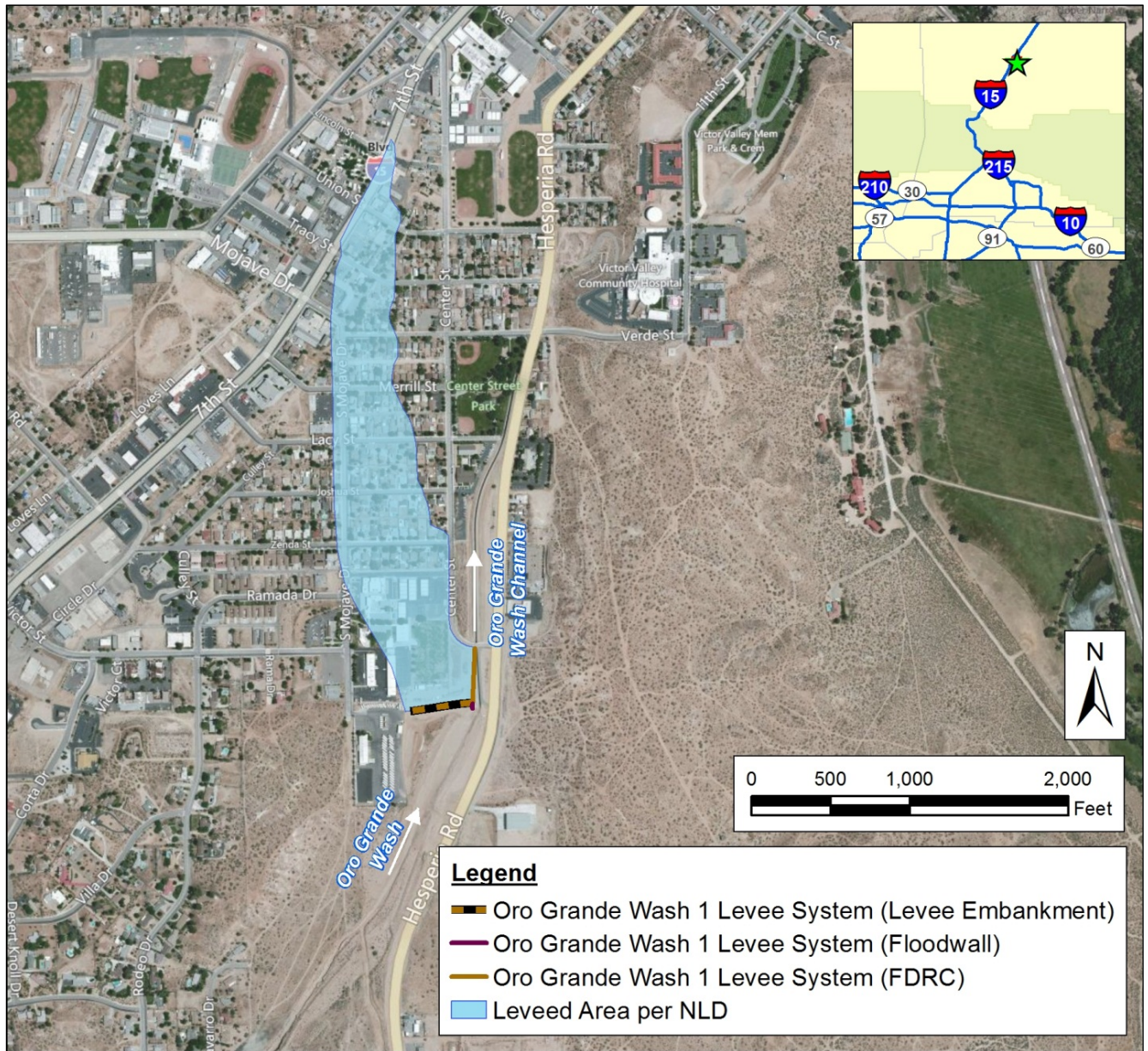


Figure 1. Oro Grande Wash 1 Levee System