



**US Army Corps  
of Engineers** ®  
Los Angeles District



---

---

**ORO GRANDE WASH 2 LEVEE SYSTEM**  
**SAN BERNARDINO COUNTY, CALIFORNIA**  
**NLD SYSTEM ID # 3805010090**

**PERIODIC INSPECTION REPORT NO 1**  
**GENERALIZED EXECUTIVE SUMMARY**

**FINAL SYSTEM RATING: ACCEPTABLE**  
**FINAL RATING DATE: JANUARY 28, 2014**

PERIODIC INSPECTION REPORT PREPARED BY TETRA TECH, INC.  
FOR THE U.S. ARMY CORPS OF ENGINEERS, LOS ANGELES DISTRICT

SUBMITTED: JANUARY 2014  
INSPECTED: OCTOBER 24, 2012

## EXECUTIVE SUMMARY

This Executive Summary provides an introduction to the periodic inspection, an overview of the system, a summary of the major findings of the periodic inspection, and the overall levee system rating.

### 1.1 Scope and Purpose of this Periodic Inspection

The purpose of this levee system periodic inspection is to identify deficiencies that pose hazards to human life or property. The inspection is intended to identify the issues in order to facilitate future studies and associated repairs as appropriate.

This assessment of the general condition of the levee system is based on available data and visual inspections. Detailed investigation and analysis involving hydrologic design, topographic mapping, subsurface investigations, testing, and detailed computational evaluations are beyond the scope of this levee system inspection.

### 1.2 System Summary

Oro Grande Wash 2 Levee System is located in the City of Victorville, in the County of San Bernardino, in the State of California. Oro Grande Wash 2 Levee System forms a collector levee that collects runoff along the Oro Grande Wash, and then funnels this runoff into the Oro Grande Wash Channel. The collector levee starts 70 feet east of the inlet to the Oro Grande Wash Channel and extends to the channel inlet. In addition, Oro Grande Wash 2 Levee System includes the right/east half of the Oro Grande Wash Channel from the channel inlet to Center Street, a distance of 378 feet. The Oro Grande Wash Channel is a reinforced concrete rectangular channel, with compacted fill behind the channel wall. The compacted fill behind the channel wall was treated as a levee embankment for inspection and reporting purposes. Of the 378 feet of channel, 27 feet has been categorized as a floodwall for inspection and reporting purposes, because the landward ground surface is lower than the top of the channel wall. The remainder of the channel was categorized as a flood damage reduction channel because the landward ground surface is the same elevation as the top of the channel wall. The updated Oro Grande Wash 2 Levee System inspection limits are shown on Figure 1. Oro Grande Wash 2 Levee System was federally authorized and subsequently constructed in 1970 by the by the United States Army Corps of Engineers, Los Angeles District (USACE LAD). It is now entirely operated and maintained by the San Bernardino County Flood Control District (hereinafter the "County"). The National Levee Database Number (NLD No.) for the Oro Grande Wash 2 Levee System is 3805010090.

During the construction of the levee system, the landward side of the levee and channel was filled with soil to the shoulder of Hesperia Road, as shown on the as-built drawings (USACE LAD, 1970). As a result, there is no longer the appearance of a levee embankment on the landward side of the levee system. At the downstream end of the levee system, it still has a backslope of approximately 12 inches, and does not cause ponding water in developed land.

### 1.3 Field Inspection and Summary of Major Deficiencies Found

A periodic inspection of the levee system was conducted on October 24, 2012. The local sponsor participated in the inspection. During the inspection of the system, several deficiencies were noted which should be monitored; however, none of the deficiencies threaten the immediate integrity of the levee system.

#### **1.4 Overall System Rating**

The Levee Safety Out-Brief Meeting was held on August 7, 2013. The local sponsor participated in the meeting. An engineering determination has concluded that this system should be inspected as a channel in the future and the observed deficiencies would not prevent the system from performing as intended during the next significant runoff event. Therefore, the Levee Safety Officer (LSO), Los Angeles District, has determined the overall system rating to be “Acceptable.”

An “Acceptable” system rating is defined as, “All items or components are rated as Acceptable.” While all the items are not rated as Acceptable, the levee system was assigned an “Acceptable” rating because no action is required in the recommendation other than monitor.

The local sponsor will be notified of the overall rating of the levee system by letter with instructions to monitor the Minimally Acceptable rated items. This system will be inspected as a channel in the future.

ORO GRANDE WASH 2 LEVEE SYSTEM  
 FINAL PERIODIC INSPECTION REPORT NO. 1

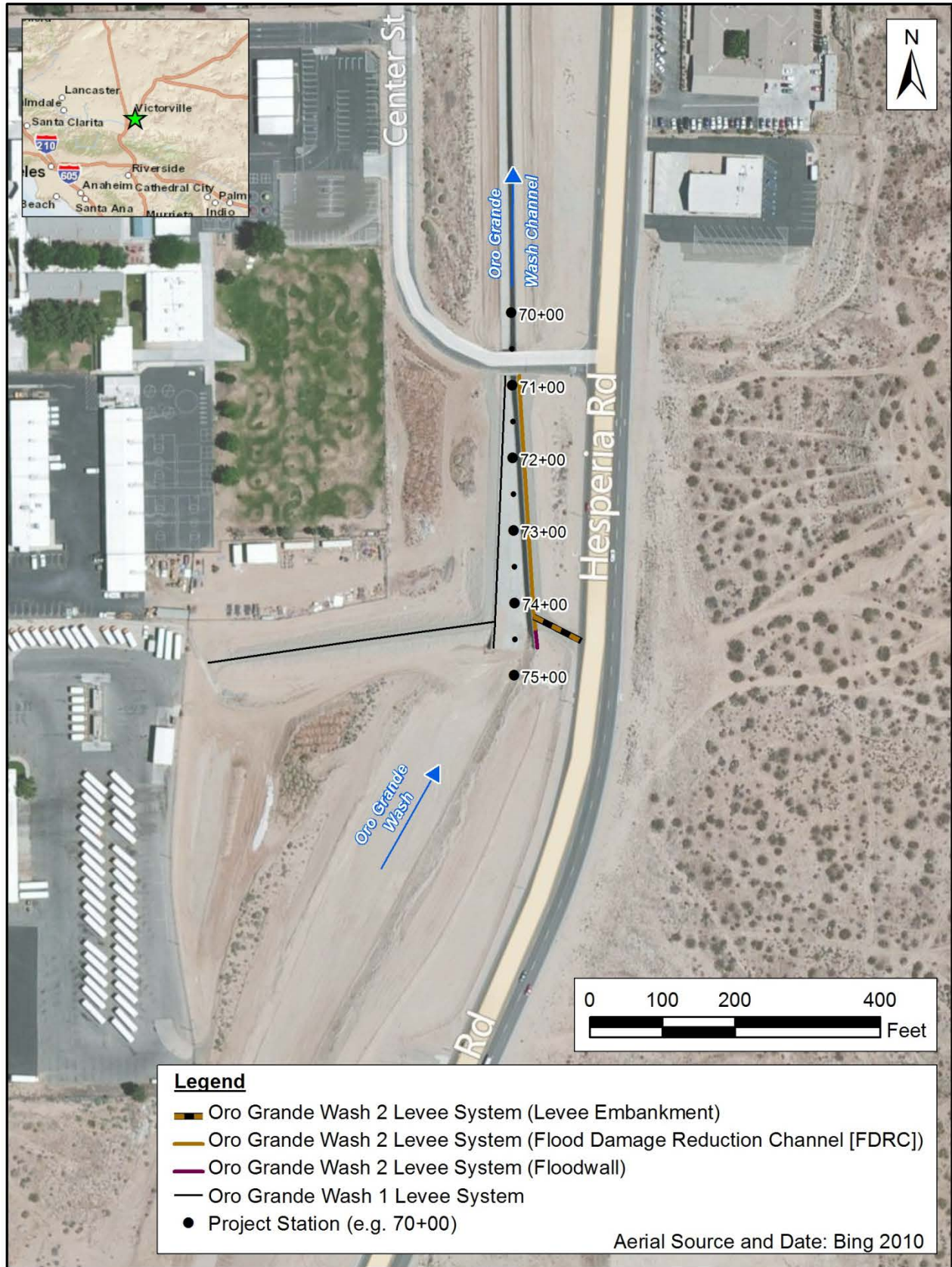


Figure 1. Oro Grande Wash 2 Levee System