



**US Army Corps
of Engineers** ®
Los Angeles District



**QUAIL WASH LEVEE SYSTEM
SAN BERNARDINO COUNTY, CALIFORNIA
NLD SYSTEM ID # 3805010069**

**PERIODIC INSPECTION REPORT NO 1
GENERALIZED EXECUTIVE SUMMARY**

**FINAL SYSTEM RATING: MINIMALLY ACCEPTABLE
FINAL RATING DATE: JULY 02, 2013**

PERIODIC INSPECTION REPORT PREPARED BY TETRA TECH, INC.
FOR THE U.S. ARMY CORPS OF ENGINEERS, LOS ANGELES DISTRICT

SUBMITTED: FEBRUARY 2013
INSPECTED: JUNE 14, 2011

EXECUTIVE SUMMARY

This Executive Summary provides an introduction to the Periodic Inspection, an overview of the system, a summary of the major findings of the Periodic Inspection, and the overall rating for the system.

1.1 Scope and Purpose of this Periodic Inspection

The purpose of the Periodic Inspection is to identify deficiencies that pose hazards to human life or property. The inspection is intended to identify the issues in order to facilitate future studies and associated repairs as appropriate.

This assessment of the general condition of the levee system is based on available data and visual inspections. Detailed investigation and analysis involving hydrologic design, topographic mapping, subsurface investigations, testing, and detailed computational evaluations is beyond the scope of this levee system inspection.

1.2 System Summary

Quail Wash Levee System was federally authorized and constructed. It was constructed by the United States Army Corps of Engineers (USACE) in 1962. The system is now locally operated and maintained by the San Bernardino County Flood Control District (SBCFCD). Quail Wash Levee System is located along the left/west bank (looking downstream) of Quail Wash (See Figure 1). It extends from the mouth of Coyote Hole Canyon to Desert Air Road, a length of 2,664 feet.

1.3 Field Inspection and Summary of Major Deficiencies Found

Quail Wash Levee System was inspected on June 14, 2011. The Local Sponsor representative met with the inspection team and assisted with granting access along the length of the levee. During the inspection of Quail Wash Levee System, several deficiencies were noted for which remedial actions are required. The following main deficiencies were noted during the inspection of the project features:

- Levee Embankment
 - Significant vegetation growth (i.e., a tree with a trunk greater than 2 inches in diameter) is present within the vegetation-free zone. The vegetation-free zone extends 15 feet away from the levee from both the landward and riverward toes of the levee.
 - Erosion gullies greater than 6 inches in depth caused by local surface-water runoff were located along the landward levee slope.
 - Numerous animal burrows were encountered. The existing animal control program in place at Quail Wash Levee System needs to be improved.

1.4 Overall System Rating

The Levee Safety Officer, Los Angeles District, has determined the overall system rating of Quail Wash Levee System to be “Minimally Acceptable.” A “Minimally Acceptable” system rating is defined as:

A Minimally Acceptable System is where one or more items are rated as Minimally Acceptable or one or more items are rated as Unacceptable and an engineering determination concludes that the Unacceptable items would not prevent the segment/system from performing as intended during the next flood event.

The Local Sponsor will be notified of the overall rating of the levee system by letter with instructions to correct the “Unacceptable” rated items as soon as possible, and correct the “Minimally Acceptable” rated items within two years so that they do not deteriorate further and become “Unacceptable.”

QUAIL WASH LEVEE SYSTEM
FINAL PERIODIC INSPECTION REPORT NO. 1

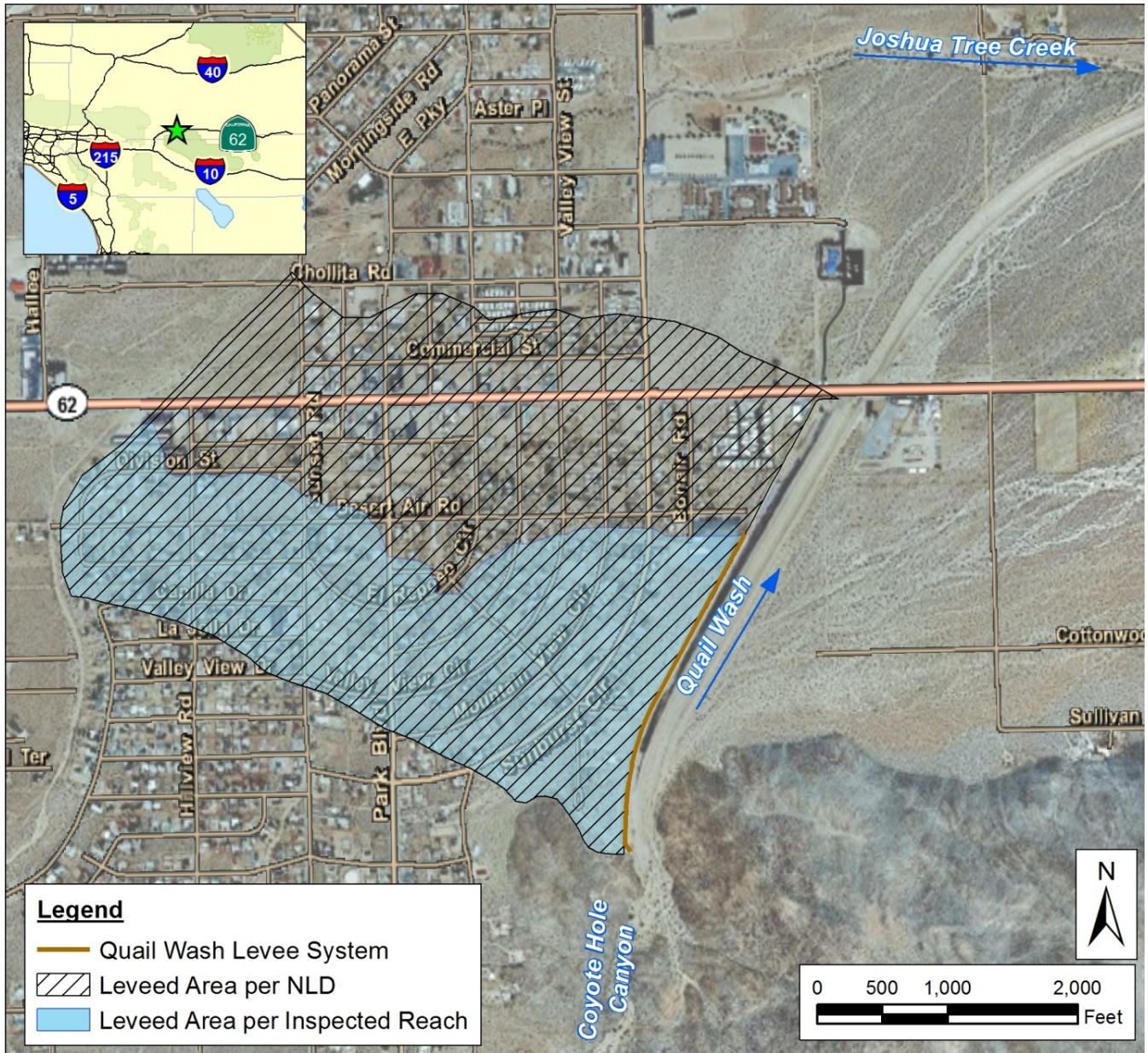


Figure 1. Quail Wash Levee System