



**US Army Corps
of Engineers** ®
Los Angeles District



SAN GORGONIO LEVEE SYSTEM
LOS ANGELES COUNTY, CALIFORNIA
NLD ID # 3805010028

PERIODIC INSPECTION REPORT NO 1
GENERALIZED EXECUTIVE SUMMARY

FINAL RATING: MINIMALLY ACCEPTABLE
FINAL RATING DATE: FEBRUARY 5, 2013

PERIODIC INSPECTION REPORT PREPARED BY TETRA TECH FOR THE
U.S. ARMY CORPS OF ENGINEERS, LOS ANGELES DISTRICT

SUBMITTED: JANUARY 2013
INSPECTED: AUGUST 11, 2010

EXECUTIVE SUMMARY

This Executive Summary provides an introduction to the periodic inspection, an overview of the system, a summary of the major findings of the periodic inspection, and the overall rating for the system.

1.1 Scope and Purpose of Periodic Inspections

The purpose of the San Gorgonio River Levee System periodic inspection is to identify deficiencies that pose hazards to human life or property. The inspection is intended to identify the issues in order to facilitate future studies and associated repairs as appropriate.

This assessment of the general condition of the levee system is based on available data and visual inspections. Detailed investigation and analysis involving hydrologic design, topographic mapping, subsurface investigations, testing, and detailed computational evaluations is beyond the scope of this levee system inspection.

1.2 System Summary

San Gorgonio River Levee System, referred to as the Banning Levee system in United States Army Corps of Engineers (USACE) construction drawings (USACE, 1965a, 1967a, and 1969a) and reports (USACE, 1963), is a flood risk reduction facility located in the City of Banning, County of Riverside, California. San Gorgonio River Levee System includes Segment 1a and Segment 1b, which are both located along the right/south bank of San Gorgonio River. Segment 1a is approximately 480 feet long and is located approximately between the north-south alignment extensions of Bluff Street and N. Murray Street. Segment 1b is 1,765 feet long and is located between the north-south alignment extensions of N. Murray Street and N. Florida Street. The total length of levee included in the San Gorgonio River Levee System is 2,245 feet (see Figure 1).

Segment 1a was locally constructed. Segment 1b was locally constructed and subsequently improved by the USACE. In addition, the USACE constructed three gabion barriers along Segment 1a and Segment 1b. One gabion barrier was constructed in 1967 and is located along 270 feet of Segment 1b. Two gabion barriers were constructed in 1969. The first is located upstream of, and along Segment 1a and along the toe of the gabion barrier previously constructed in 1967. The second gabion barrier is located along 750 feet of Segment 1b. San Gorgonio River Levee System is now entirely operated and maintained by the Riverside County Flood Control and Water Conservation District (RCFC & WCD).

It should be noted that the San Gorgonio River Levee System originally also included the 583 feet of earthen levee embankment located between N. Florida Street and N. Hargrave Street. This segment of levee was referred to as Segment 1c, and was inspected as part of the periodic inspection. During the levee system outbreak on March 27, 2012, the USACE asked that Segment 1c be removed from the San Gorgonio River Levee System based on that it was built by Robertson's Ready Mix, is located at the downstream end of the system, and appears to only provide flood risk reduction to the Robertson's Ready Mix quarry which is located on the landside of Segment 1c. As a result, San Gorgonio River Levee System only includes Segment 1a and Segment 1b.

1.3 Summary of Major Deficiencies Found

The levee system was inspected on August 11, 2010. During the periodic inspection of the system, several deficiencies were noted for which remedial actions are required; however, no major deficiencies were observed.

1.4 Overall Rating

The Levee Safety Officer, Los Angeles District, has determined the overall system rating of San Gorgonio River Levee System to be Minimally Acceptable. A Minimally Acceptable system rating is defined as:

A Minimally Acceptable System is where one or more items are rated as Minimally Acceptable or one or more items are rated as Unacceptable and an engineering determination concludes that the Unacceptable items would not prevent the segment/system from performing as intended during the next flood event.

The local sponsor will be notified of the overall rating of the levee system by letter with instructions to correct the “Unacceptable” rated items as soon as possible, not to exceed two years, and to correct the “Minimally Acceptable” rated items so that they do not deteriorate further and become “Unacceptable.”

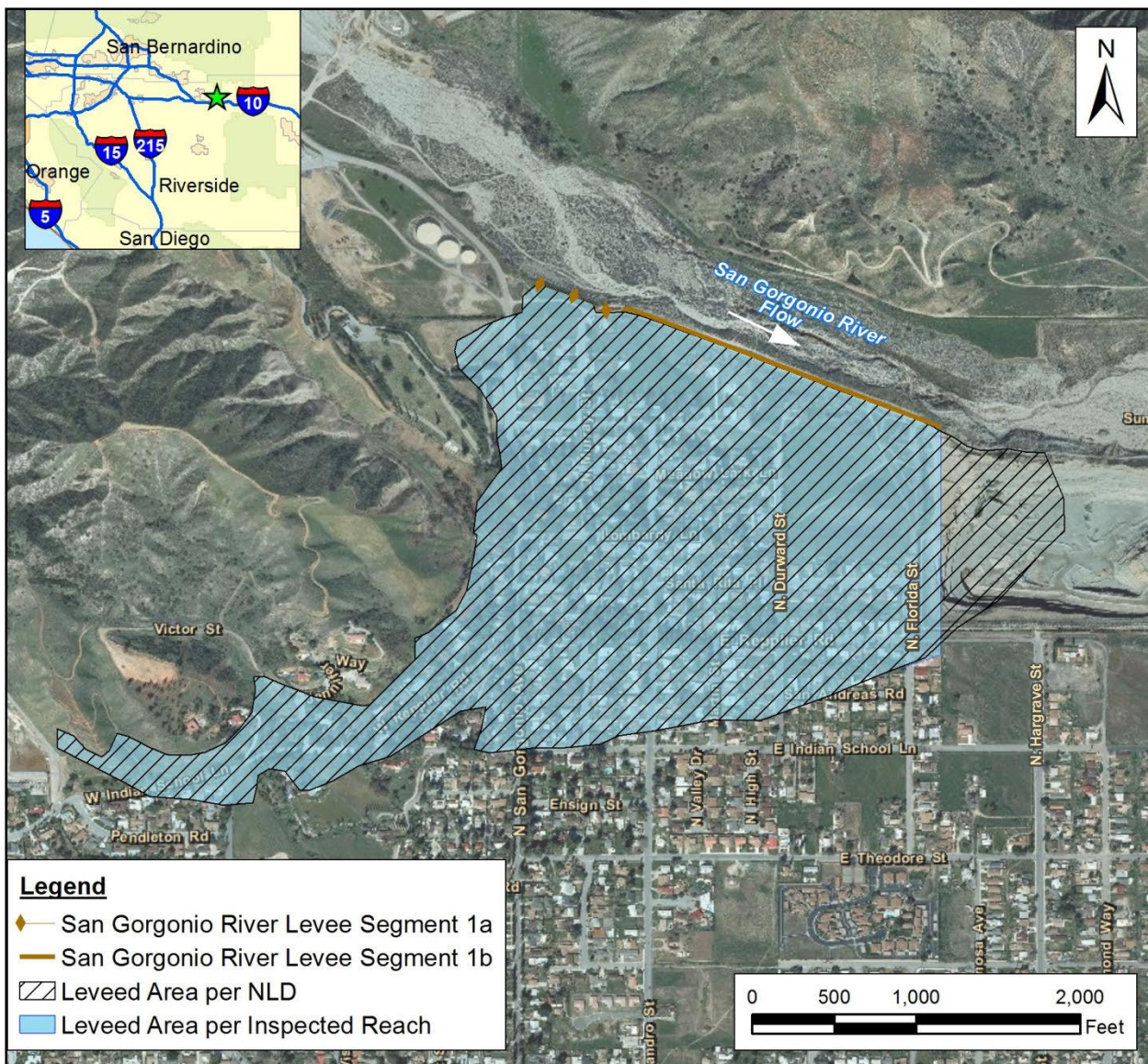


Figure 1. San Gorgonio Levee System Map