



**US Army Corps  
of Engineers®**  
Los Angeles District



---

# **TIJUANA RIVER 3 LEVEE SYSTEM**

## **SAN DIEGO COUNTY, CALIFORNIA**

### **NLD SYSTEM ID # 3805010097**

#### **PERIODIC INSPECTION REPORT NO. 1**

#### **GENERALIZED EXECUTIVE SUMMARY**

**FINAL SYSTEM RATING: MINIMALLY ACCEPTABLE**  
**FINAL RATING DATE: AUGUST 31, 2015**

PERIODIC INSPECTION REPORT PREPARED BY TETRA TECH FOR THE  
U.S. ARMY CORPS OF ENGINEERS, LOS ANGELES DISTRICT

SUBMITTED: AUGUST 2015  
INSPECTED: MARCH 3, 2015

## EXECUTIVE SUMMARY

This Executive Summary provides an introduction to the Periodic Inspection, an overview of the Tijuana River 3 (TR3) Levee System, a summary of the major findings of the Periodic Inspection of the TR3 Levee System, and the overall rating for the TR3 Levee System.

### 1.1 Scope and Purpose of Periodic Inspections

The purpose of the TR3 Levee System Periodic Inspection is to identify deficiencies that pose hazards to human life or property. The inspection is intended to identify the issues in order to facilitate future studies and associated repairs as appropriate.

This assessment of the general condition of the TR3 Levee System is based on available data and visual inspections. Detailed investigation and analysis involving hydrologic design, topographic mapping, subsurface investigations, testing, and detailed computational evaluations are beyond the scope of this levee system inspection.

### 1.2 System Summary

The TR3 Levee System is located along the southern boundary of the Sunrise Development, north of the Tijuana River, in the state of California, in San Diego County, in the city of San Diego (Figure 1). The TR3 Levee System is offset by approximately 2,000 feet to 3,000 feet from the right/north bank of the Tijuana River. There are agricultural fields, baseball fields, a street (i.e., Sunset Avenue), and other agricultural developments that are located in the area between the Tijuana River and the TR3 Levee System. The TR3 Levee System was federally authorized and subsequently constructed by the U.S. Army Corps of Engineers, Los Angeles District (USACE LAD). Construction of the TR3 Levee System along the Tijuana River was completed in November 2002. The TR3 Levee System is now entirely operated and maintained by the City of San Diego. The National Levee Database Number (NLD No.) for the TR3 Levee System is 3805010097.

The TR3 Levee System extends from Station 0+00 to the downstream limit of the berm along Hollister Street (Station 29+20), a distance of approximately 2,920 feet (0.55 miles). It should be noted that the stationing on the construction drawings (USACE LAD 2001) ends at Station 27+26 and no stationing was included along the berm along Hollister Street. The berm starts at Station 26+92 (where the berm joins the levee). The berm is approximately 228 feet long, so an assumed station of 29+20 is considered as the downstream limit of the TR3 Levee System. From Station 0+00 to Station 26+92, the TR3 Levee System has an earthen levee embankment with riprap on the riverward slope and cobblestone on both the levee crown and landward slope. From Station 26+92 to Station 29+20, the TR3 Levee System has an earthen berm with riprap on the riverward slope. Other features of the TR3 Levee System include two diversion structures.

### 1.3 Summary of Major Deficiencies Found

The Periodic Inspection of the TR3 Levee System was conducted on March 3, 2015, and a representative from the City of San Diego was present. During the inspection of the levee system, deficiencies were noted for which remedial actions are required. The following main deficiencies of the project features were noted during the Periodic Inspection:

- Levee Embankment:
  - Non-Compliant Vegetation Growth: Significant vegetation growth including trees with trunks larger than 2-inches in diameter and shrubs were present within the vegetation-free

zone. The vegetation-free zone extends 15 feet outward from both the landward and riverward toes of the levee.

- Interior Drainage Systems:
  - Vegetation and Obstructions: The outlets and inlets of the two diversion structures were obstructed by vegetation and sediment by more than 10 percent.
  - Culverts/Discharge Pipes: The two diversion structures have not been video inspected.

#### **1.4 Overall Rating**

The Levee Safety Out-Brief Meeting was held on June 24, 2015. An engineering determination has concluded that the observed deficiencies would not prevent the system from performing as intended during the next significant runoff event. Therefore, the Levee Safety Officer (LSO), Los Angeles District, has determined the overall rating of the TR3 Levee System to be “Minimally Acceptable.”

*A “Minimally Acceptable” system rating is defined as, “One or more items are rated Minimally Acceptable or one or more items are rated Unacceptable and an engineering determination concludes that the Unacceptable items would not prevent the segment/system from performing as intended during the next significant runoff event.”*

The Local Sponsor will be notified of the overall rating of the levee system by letter with instructions to correct the Unacceptable rated items as soon as possible, and correct the Minimally Acceptable rated items within two years so that they do not deteriorate further and become Unacceptable.



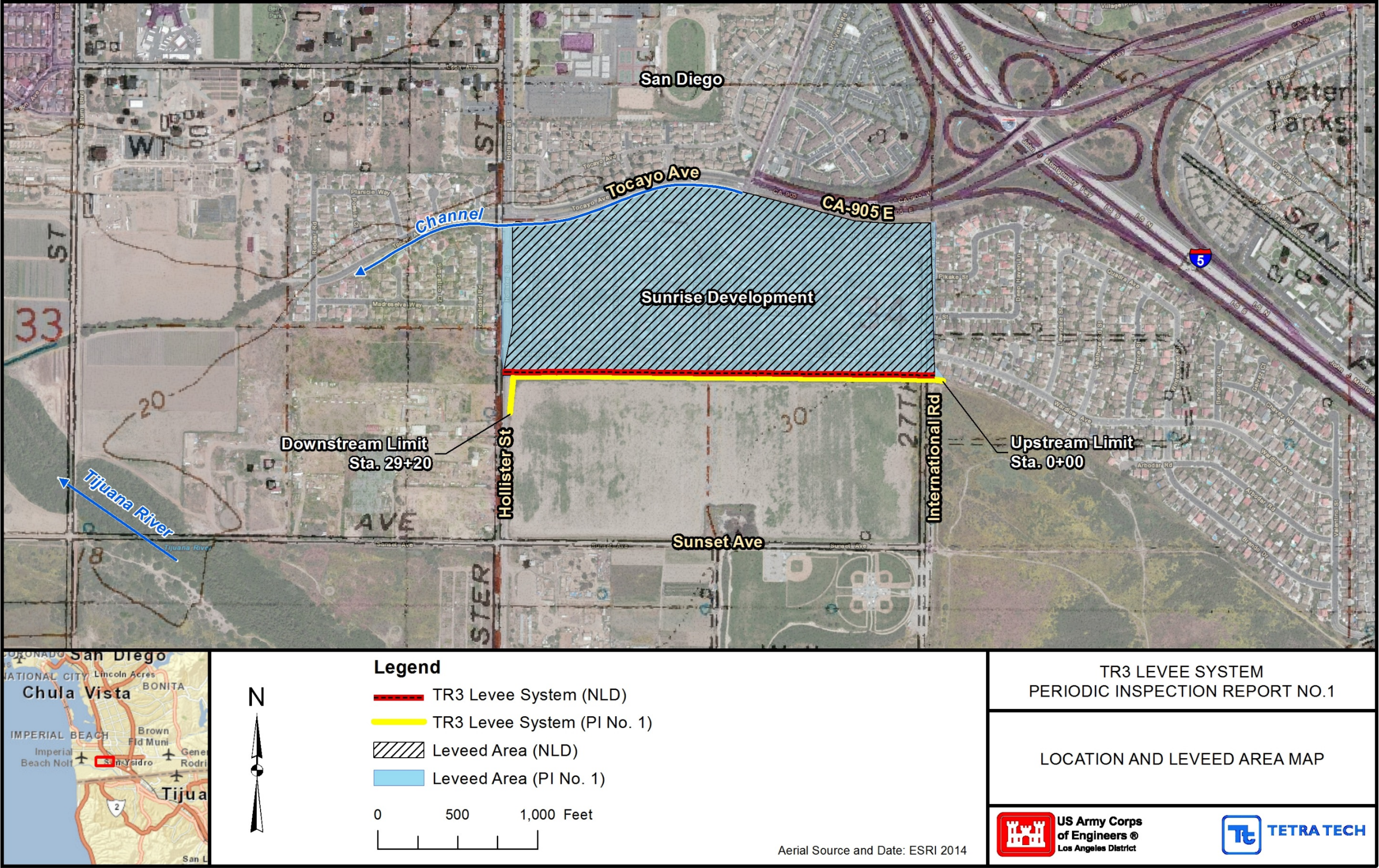


Figure 1