

®

find us online:

www.usace.army.mil



US Army Corps of Engineers
BUILDING STRONG®
since 1775

US ARMY CORPS OF ENGINEERS

Our beginnings

June 16, 1775

Played a crucial role in
growth of young republic

Surveyed canals, railroad routes and served
as **explorers** and **map makers**

Responded to changing
defense requirements

Today

We continue the tradition of providing
vital engineering services

Securing the nation

Energizing the economy

Reducing risk from disaster

We are **engineering solutions**
for our nation's toughest challenges

BUILDING STRONG®

We don't mean to brag, but our people are innovative, collaborative, dedicated, talented, driven and educated

34K civilian employees

800 military personnel

Turning on the lights

The 249th Engineer Battalion (**Prime Power**) is the government's only prime power capability

300 number of soldiers in the battalion

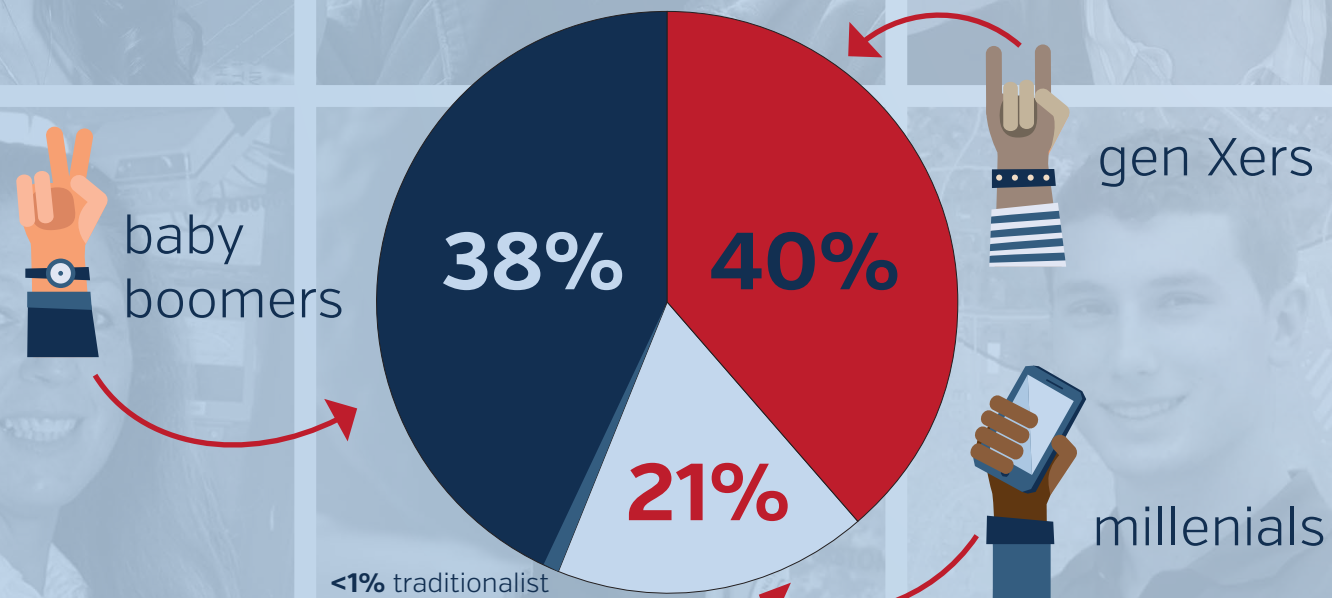
The unit deploys worldwide to provide commercial-level power and electrical systems support for military operations and disaster-response missions

38 number of college credits received through training

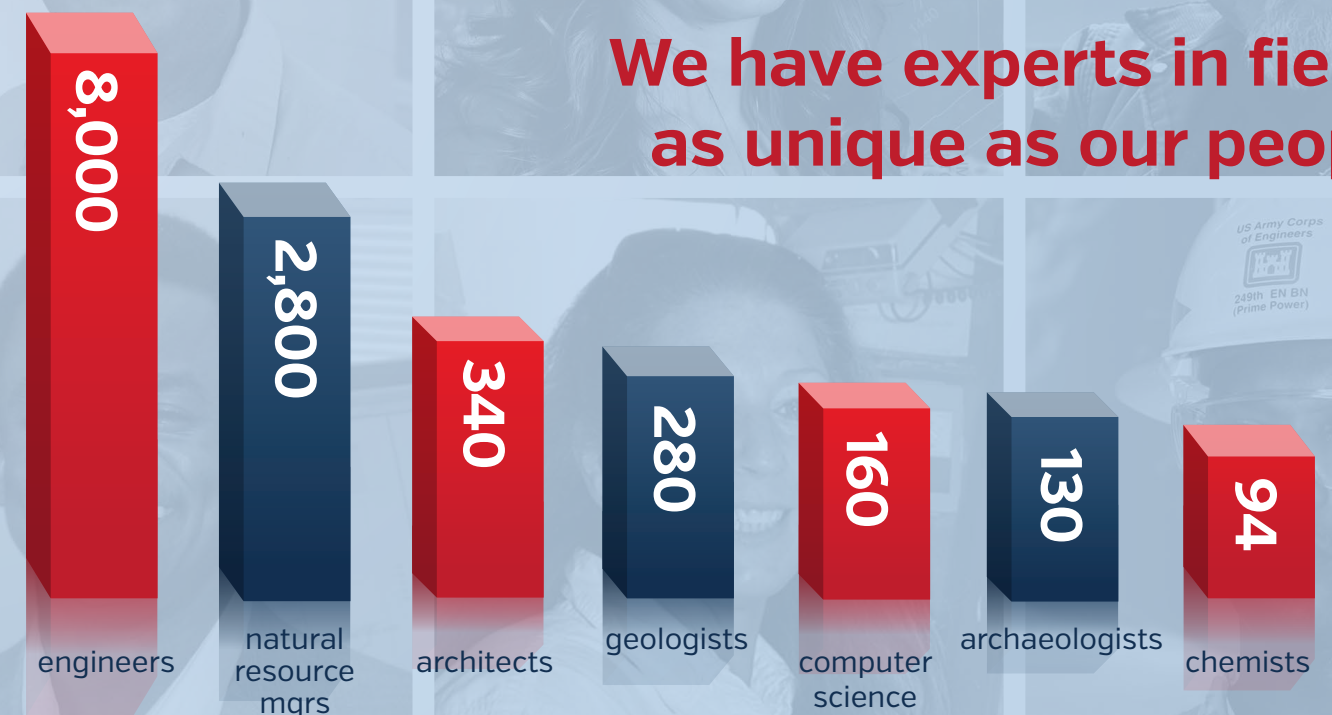
11K

Volunteer civilian deployments in support of contingency operations to **Iraq** and **Afghanistan** since 2001

DIVERSE MINDS



We have experts in fields as unique as our people



KEY BRIDGE
Built this structure between 1916 and 1923



AMERICAN RED CROSS
Supervised the building of this memorial to women of the civil war



WASHINGTON AQUEDUCT
The aqueduct produces drinking water for approximately **one million** citizens in Washington and the northern Virginia area

Three renovation efforts
1902, the 1920s and an almost complete rebuilding of the interior from 1948-1952



WHITE HOUSE



WASHINGTON MONUMENT

U.S. CAPITOL
The Corps supervised the extension of the Capitol building and construction of a new larger dome in the 1850s and early 1860s



SMITHSONIAN BUILDINGS



Engineers helped guide construction of Smithsonian's earliest buildings including the recognizable castle building and the Natural History museum

LIBRARY OF CONGRESS

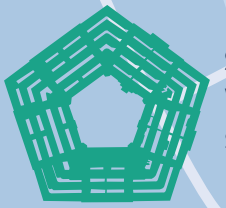


Managed the construction of the **Lincoln Memorial**, **Washington Monument**, the **Korean Veterans Memorial**, the **Library of Congress** and other historic structures

What would Washington look like if Army engineers had not had a hand in building the city?



LINCOLN MEMORIAL



PENTAGON

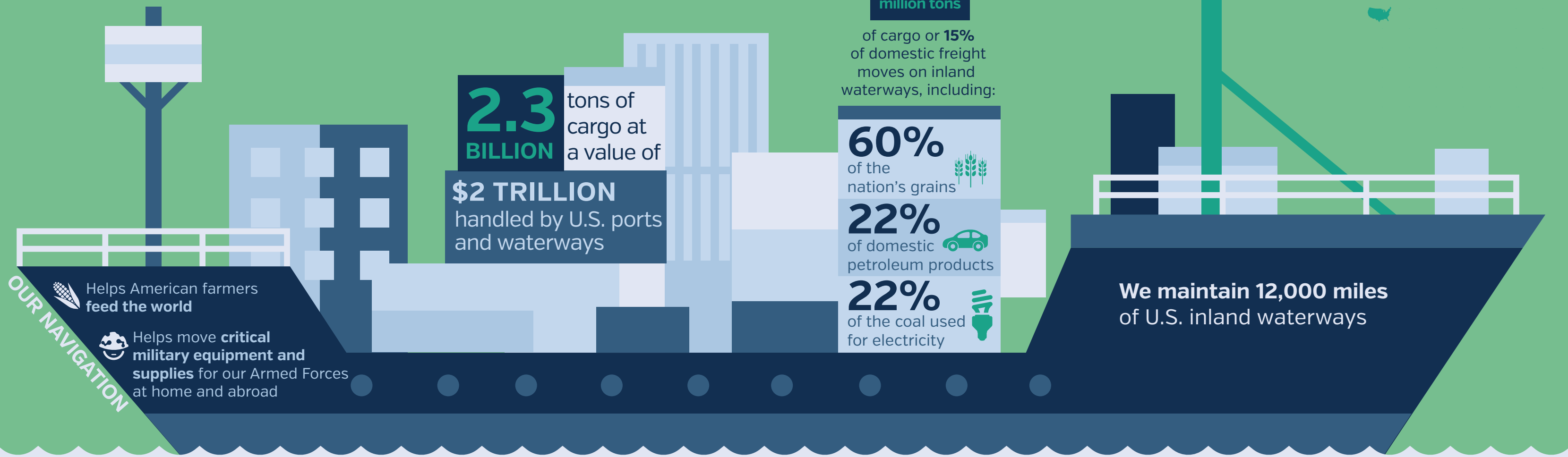
SUPER FAST TURNAROUND
We led the construction of this structure that was built in a mere **16 months**

In the late 1930s, the Army Corps of Engineers dredged material to create land in the Potomac River for the site of the airport
We also paved runways and built hangars and administration buildings



REAGAN NATIONAL AIRPORT

Almost everything Americans use moves through waterways we maintain



CONNECTING GLOBALLY

98% of the overseas trade moves through Corps projects

48% of consumer goods bought by Americans pass through harbors maintained by the Corps

More than **70%** of imported oil comes to U.S. through harbors maintained by the Corps

The energy we generate powers a cleaner America

 Largest renewable energy producer in the U.S.

POWERFUL

 out of every    

MEGAWATTS

of hydropower in the U.S. is generated by our plants

5th
LARGEST
electric supplier
in the U.S.



DEDICATED

Our technicians work **24 HOURS A DAY**
7 DAYS A WEEK
365 DAYS A YEAR
and minute-by-minute to monitor energy production

CONSCIENTIOUS
Our hydroelectric plants save



50
MILLION
metric tons

of carbon dioxide-equivalent emissions per year

Per year, we generate

75

BILLION
kilowatt-hours of clean renewable energy

enough to power **10 cities** the size of Seattle, Washington



1934

Built Bonneville Dam near Portland, Oregon, the **FIRST** multipurpose facility with hydroelectric power
It provides electricity for approximately

500K homes per year



We are the nation's environmental engineer

More than **4K** engineers and scientists working in environmental arena



CLEAN ENERGY LEADERS
Bringing green energy to places near you: recreation areas, dams, work places, military bases



by **2025** we expect to **remove** the equivalent of

25K



cars from the road each year through our **sustainable efforts**



LEADING THE WAY

Helps lead federal efforts to shrink the government's energy footprint and **decrease demand on natural resources**



CLEANING YOUR COMMUNITY

Working in **all 50 states** (and six territories): cleaning neighborhoods, parks and business sites



Environmental Stewardship & Restoration **MANAGE**

12 million acres

of land and water [the size of **New Hampshire & Vermont** combined]



in **43 states**

We deliver innovative, resilient, and sustainable solutions to the Department of Defense and the nation

IRAQ completed more than **\$15 BILLION** in construction

AFGHANISTAN will complete **\$10.1 BILLION** in construction

We issued contracts to more than **90 COMPANIES** in **4 TECHNOLOGIES** solar, wind, biomass and geothermal providing the energy needed to power Army installations and conduct soldier training



Environmental cleanup programs getting smaller **\$1.5 BILLION** in 2017



Where we are ...



Engagement 110+ countries

● Physical Presence 43 countries

Building world-class facilities for our servicemembers to

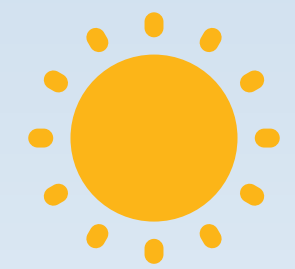


work train & live

Manage more than **25 MILLION** acres in real property assets for Army



We are enhancing quality of life



more than **90%** of our lakes are within **50 miles** of a metropolitan area



We are one of the nation's **leading federal providers** of outdoor recreation



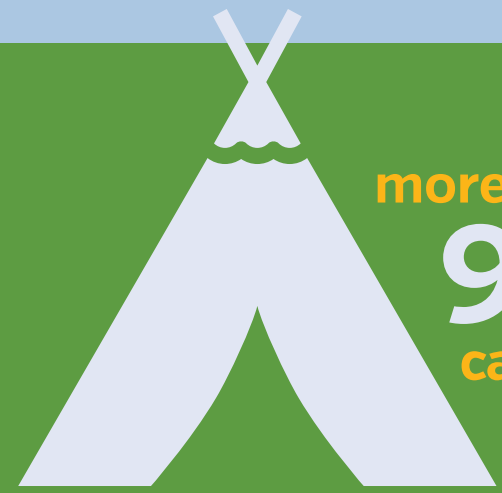
visitors contribute **BILLION \$10.7** to the local economy



more than **36K** picnic sites



approximately **250 MILLION** visits per year



more than **93K** campsites



more than **7.8K** miles of trails

approximately **180K** jobs supported by visitor spending



nearly **45K** volunteers working **1.6 MILLION** hours



We are reducing risk for Americans

about **2,200 LEVEE SYSTEMS & 700+ DAMS**

Reducing the impacts of **flooding** on people, businesses, critical infrastructure and the environment

We own and operate

6 of the 10 largest U.S. reservoirs

6 of the 10 largest U.S. embankment dams

50% of all federally-owned dams

We operate

approximately **240** navigation lock chambers

at more than **190** sites

manage dams in

44

STATES

PROTECTING

\$3 TRILLION in national infrastructure along our coasts

\$675 BILLION total damages prevented by dams, levees and emergency operations from 2007 to 2016



over **107 MILLION** people

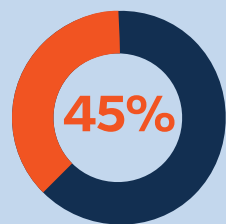
We are one of the world's premier engineering and scientific research organizations



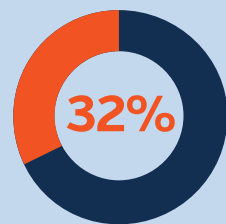
Our research and development facilities are made up of **2,000+ highly skilled professionals**



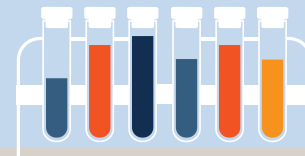
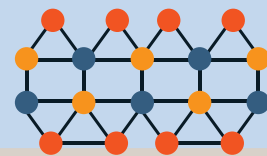
Engineering & Science Degrees



Master's

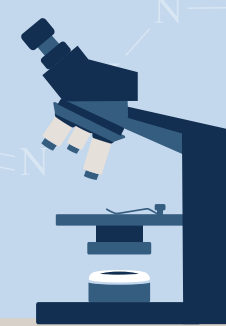


PhDs



Our toys are cooler than your toys

- World-class facilities include the **WORLD'S MOST POWERFUL** centrifuge
- BLAST EFFECTS** facilities
- hazardous waste research laboratories
- ENDANGERED SPECIES** laboratories
- frost and ice engineering facilities
- 1800-FOOT** coastal research pier



SUPER FAST



Our supercomputers are some of the most powerful and fastest in the world, with a capability of **3.5 quadrillion calculations per second**

OUTREACH

Reach more than **9K students** through **STEM** programs



377	12326	377
074	06987	074
587	87364	587
858	23745	858
675	76565	675

INNOVATIVE more than **100** active patents

We are everywhere we need to be ...

Headquarters

9 Divisions

43 Districts

9 Centers and Labs

1 Active-Duty Unit

[249th Engineer Battalion (Prime Power)]

2 U.S. Army Reserve

Theater Engineer Commands

[412th and 416th]

