



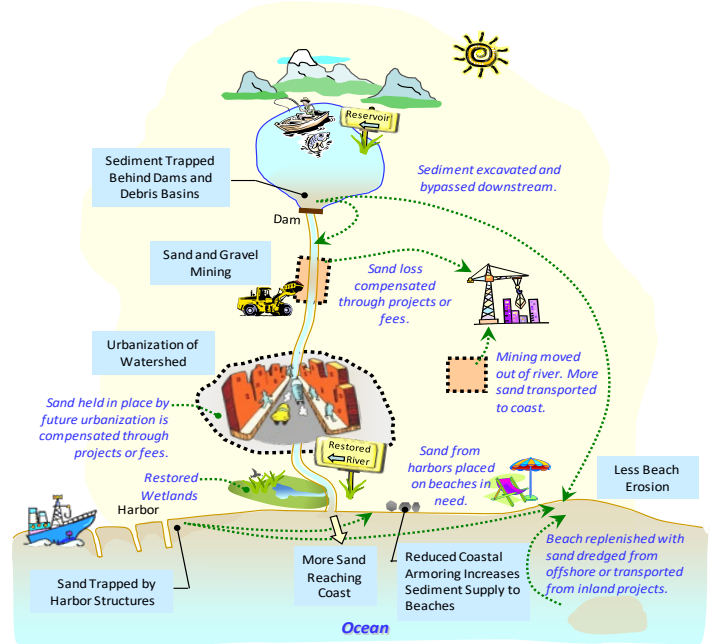
California Coastal Sediment Master Plan

U.S. ARMY CORPS OF ENGINEERS

BUILDING STRONG.

LOCATION AND DESCRIPTION:

Study area encompasses the California coastline, including the near shore ocean environment and the coastal watersheds. Purpose of the study is to develop a comprehensive plan for management, restoration, protection and preservation of the sediment resources along the California coast. Ultimately, the project will provide analyses that will enable federal, state and local entities to assess and prioritize regionally based projects for potential investment of program funds. Study will evaluate alternatives for reducing damages from coastal storms; increasing the natural sediment supply to the coast through dam removal and other means; restoring aquatic ecosystems; and identifying potential sources of sediment, such as material dredged from ports and harbors. Some of these alternatives may lie outside the Federal interest. Project will provide Federal and non-Federal entities with an adaptive, programmatic road map to plan and program potential future coastal resources projects. Project will allow these entities to develop water resources projects within a system-oriented context, where data can be easily shared and technical expertise and tools can be efficiently directed to solve coastal resources problems on a regional basis.



Regional Sediment (Sand) Management

AUTHORIZATION:

Section 227 WRDA 1996, House Committee on Transportation & Infrastructure Resolution 2672, May 22, 2002.

ACTIVITIES FOR FY 2021:

Carryover funds will be used to complete crediting of WIK and study close out by end of Jun21.

FY 2022 PLANNED ACCOMPLISHMENTS:

None.

ISSUES AND OTHER INFORMATION:

None.

CONGRESSIONAL INTEREST:

Congressman Carbajal (CA-24);
 Congresswoman Brownley (CA-26);
 Congressman Lieu (CA-33);
 Congressman Lowenthal (CA-47);
 Congressman Steel (CA-48);
 Congressman Levin (CA-49);
 Congressman Vargas (CA-51); and Congressman Peters (CA-52).

FINANCIAL SUMMARY:

	As of 1 Mar 21	Feasibility
Estimated Federal Cost	\$6,901,000	
Estimated Non-Federal Cost	\$6,901,000	
Total Estimated Project Cost	\$13,802,000	
Allocation thru FY20	\$6,901,000	
Allocation for FY21		\$0
President's Budget for FY22		\$0
House Report for FY22		\$0
Senate Report for FY22		\$0
Balance to Complete After FY 22		\$0

U.S. ARMY CORPS OF ENGINEERS – LOS ANGELES DISTRICT

915 WILSHIRE BLVD., SUITE 930, LOS ANGELES, CA 90017

<http://www.spl.usace.army.mil>



U.S. ARMY CORPS OF ENGINEERS – LOS ANGELES DISTRICT
915 WILSHIRE BLVD., SUITE 930, LOS ANGELES, CA 90017
<http://www.spl.usace.army.mil>