



Carpinteria Shoreline, CA

Investigations

U.S. ARMY CORPS OF ENGINEERS

BUILDING STRONG.

LOCATION AND DESCRIPTION:

The City of Carpinteria is located on the Santa Barbara County coast 80 miles north of Los Angeles, 15 miles north of Ventura, and 12 miles south of Santa Barbara. The study area is between Ash and Linden Avenues. The study reach is about 1,300 feet of shoreline. The State Beach borders the southern limit of the reach and the Carpinteria Marsh borders the northern limit. There are approximately 13 structures within the reach that are directly affected by shoreline erosion and wave attacks. The structures behind the fronting properties may be affected by coastal flooding during storm.

AUTHORIZATION:

River and Harbor Act of 1965 / Flood Control Act of 1965, Section 208, PL 106-60.

ACTIVITIES FOR FY 2021:

The SMART planning waiver has been denied with approval to convert project to CAP. Working on WIK crediting and feasibility close out for conversion of project to CAP 103.

FY 2022 PLANNED ACCOMPLISHMENTS:

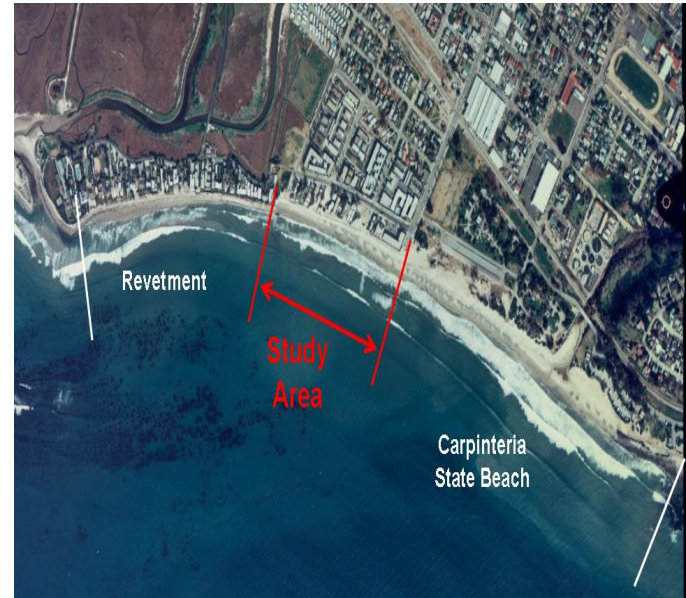
N/A

ISSUES AND OTHER INFORMATION:

None.

CONGRESSIONAL INTEREST:

Congressman Carbajal (CA-24).



As of: 2 Mar '21

FINANCIAL SUMMARY:

	<u>FEASIBILITY</u>
Estimated Federal Cost	\$2,918,000
Estimated Non-Federal Cost	\$2,718,000
Total Estimated Project Cost	\$5,636,000
Allocation thru FY20	\$1,580,000
Allocation for FY21	0
President's Budget for FY22	0
House Report for FY22	0
Senate Report for FY22	0
Balance to Complete After FY22	\$1,338,000

U.S. ARMY CORPS OF ENGINEERS – LOS ANGELES DISTRICT

915 WILSHIRE BLVD., SUITE 930, LOS ANGELES, CA 90017

<http://www.spl.usace.army.mil>