



# Desert Hot Springs, CA

## Construction

U.S. ARMY CORPS OF ENGINEERS

BUILDING STRONG®

### LOCATION AND DESCRIPTION:

The city of Desert Hot Springs is located in Riverside County, California approximately 110 miles east of Los Angeles. The proposed work would help to protect one of the premier groundwater resources in the country. It would do this by collecting and treating wastewater and abatement of septic systems that threaten the high-quality groundwater aquifer. This project would also help create a sufficient stream of recycled wastewater for a proposed power generation plant.

### AUTHORIZATION:

WRDA 1992, Section 219 (c) amended by Consolidated Appropriations Act of 2001, Section 108 (a) (23). WRDA 2007, Section 5006 (12).

### ACTIVITIES FOR FY 2021:

Award contract for design of Areas A and G collection systems.

### FY 2022 PLANNED ACCOMPLISHMENTS:

Funding could be used to continue implementation of water treatment facilities in coordination with the sponsor. With sufficient funding we will construct portions of Area M-2-2 or K.

### ISSUES AND OTHER INFORMATION:

**Area D-1** – Construction of approximately 9,500 linear ft. of VCP sewer main pipeline and 4,600 ft. of VCP sewer lateral pipeline to an additional 203 parcels in NW Desert Hot Springs.

**Area D-2** – Construction of approximately 42,000 linear ft. of VCP sewer main pipeline and approximately 28,000 linear ft. of VCP sewer lateral pipeline to an additional 762 parcels in North Desert Hot Springs.

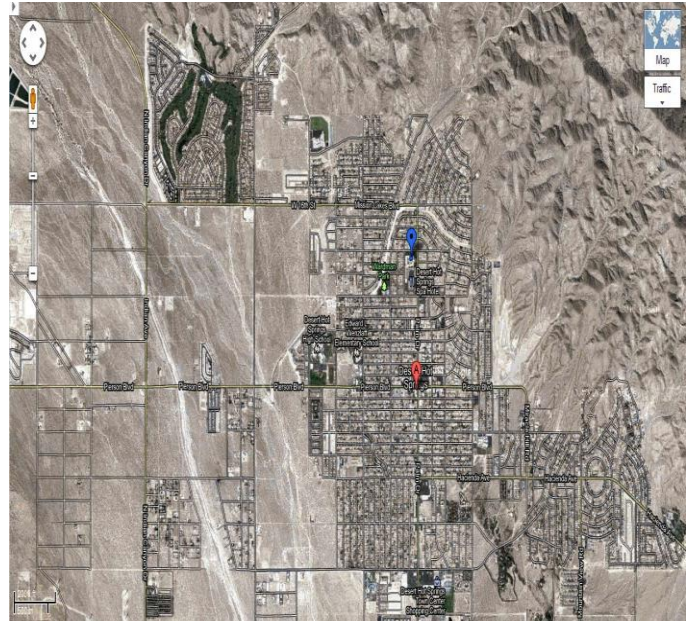
**Area F** – Construction of approximately 44,200 linear ft. of VCP sewer main pipeline and 30,940 linear ft. of VCP sewer lateral pipeline to an additional 1,100 parcels in NW Desert Hot Springs.

**Area J** – Construction of approximately 37,000 linear ft. VCP sewer main pipeline and approximately 24,000 ft. of VCP sewer lateral pipeline for approximately 500 parcels.

**Area M** – Construction approximately 45,000 linear ft. of VCP sewer main pipeline and approximately 31,000 linear ft. of VCP sewer lateral pipeline for approximately 900 parcels.

### CONGRESSIONAL INTEREST:

Congressman Ruiz (CA-36).



### SUMMARIZED FINANCIAL DATA:

As of 25 MAR 21

### CONSTRUCTION

Estimated Federal Cost	\$35,000,000
Estimated Non-Federal Cost	\$12,000,000
Total Estimated Project Cost	\$47,000,000
Allocation thru FY20	\$1,950,000
Allocation for FY21	\$0
President's Budget for FY22	TBD
House Report for FY22	TBD
Senate Report for FY22	TBD
Balance to Complete After FY22	\$33,050,000

U.S. ARMY CORPS OF ENGINEERS – LOS ANGELES DISTRICT

915 WILSHIRE BLVD., SUITE 930, LOS ANGELES, CA 90017

<http://www.spl.usace.army.mil>