



Murrieta Creek, CA

Construction

U.S. ARMY CORPS OF ENGINEERS

BUILDING STRONG.

LOCATION AND DESCRIPTION:

The project encompasses Murrieta Creek in Riverside, California. Murrieta Creek is a significant tributary to the Santa Margarita River. The project is multi-purpose flood control, environmental restoration, and recreation project along 7.5 miles of Murrieta Creek. The authorized project's major features include approximately 7 miles of channel improvements, three bridge replacements; a 270-acre detention basin with 163 acres of wetland restoration; and a 49-acre recreation park. The project is designed to protect the 1% flood event for the cities of Temecula and Murrieta. The project is divided into four construction phases.

AUTHORIZATION:

Public Law 106-377 Energy and Water Appropriation, 2001, Section 103, Public Law 107-66 Energy and Water Appropriation, 2002.

ACTIVITIES FOR FY 2021:

Carryover funding will be used to complete environmental documentation and construction of vegetation and sediment removal in Phase 1 and 2A.

FY 2022 PLANNED ACCOMPLISHMENTS:

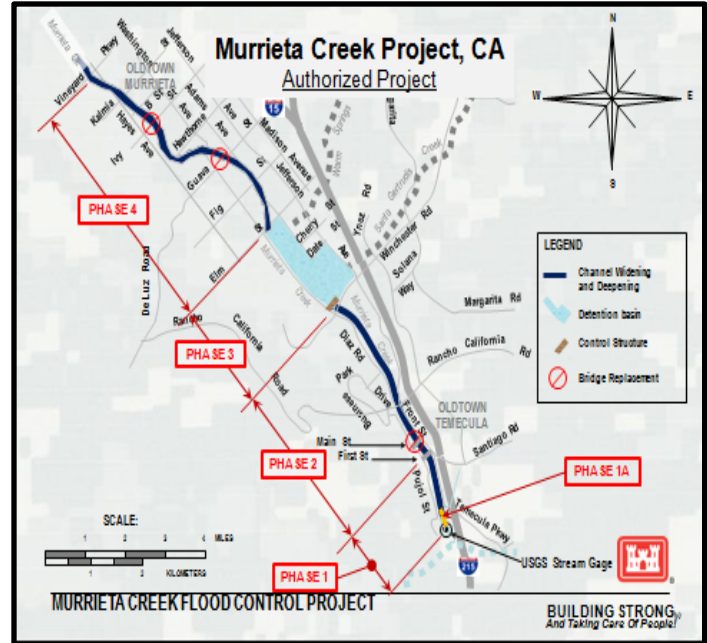
Optimal funding could be used to Award contract for Phase III construction. Turnover Phases 1 and 2A. Complete Validation Report if this is HQ's recommended COA.

ISSUES AND OTHER INFORMATION:

The project has a low-cost ratio and no Office of Management and Budget (OMB) clearance. The sponsor requested that inefficient features (Phase 1A and 4) be removed from the project so that it would be justified as per Corps policy.

CONGRESSIONAL INTEREST:

Senator Feinstein and Harris, Congressman Calvert (CA-42); and Congressman Issa (CA-50).



As of: 1 Mar 2021

FINANCIAL SUMMARY:

Estimated Federal Cost
 Estimated Non-Federal Cost
 Total Estimated Project Cost
 Allocation thru FY20
 Allocation for FY21
 President's Budget for FY22
 House Report for FY22
 Senate Report for FY22
 Balance to Complete After FY22

CONSTRUCTION

\$88,495,000
 \$50,884,000
 \$139,440,000
 \$34,094,000
 \$0
 \$0
 \$0
 \$0
 \$54,401,000

U.S. ARMY CORPS OF ENGINEERS – LOS ANGELES DISTRICT

915 WILSHIRE BLVD., SUITE 930, LOS ANGELES, CA 90017

<http://www.spl.usace.army.mil>