



# Upper Newport Bay Harbor, CA

## Construction

U.S. ARMY CORPS OF ENGINEERS

BUILDING STRONG.

**LOCATION AND DESCRIPTION:**

Project is located about 40 miles SE of Los Angeles, containing a mix of the marina and residential development in its lower reach and 800-acre ecological reserve in the upper bay.

The Upper Newport Bay Ecological Reserve (UNBER) plays a role in providing habitat for a variety of endangered species. Sedimentation has rapidly increased due to urbanization of the watershed affecting the upper reach and the existing Federal navigation channel in the lower bay.

The authorized project included dredging of side-channel to protect habitat islands, dredging two large capacity sediment basins, relocating a least tern nesting island and providing restoration measures to the degraded habitat areas and re-establishing wetland and wildlife habitat areas.

**AUTHORIZATION:**

PL 99-662 (WRDA 86, Section 841), WRDA 2000, Section 101 (b) (9), Jun 09, PL111-32 Sec 407.

**ACTIVITIES FOR FY 2021:**

Project is in closeout status.

**FY 2022 PLANNED ACCOMPLISHMENTS:**

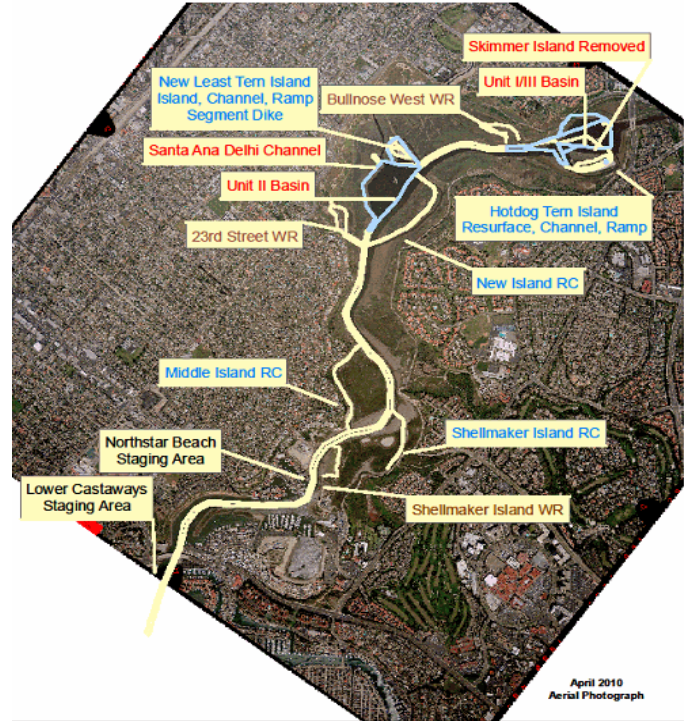
None.

**ISSUES AND OTHER INFORMATION:**

Project is complete.

**CONGRESSIONAL INTEREST:**

Senator Feinstein; and Congress persons Kim (CA-39), Porter (CA-45), and Steele (CA-48).



Upper Newport Bay Ecosystem Restoration Project Features

As of: 7 May 21

**FINANCIAL SUMMARY:**

	<b><u>Construction</u></b>
Estimated Federal Cost	\$31,678,000
Estimated Non-Federal Cost	\$17,800,000
Total Estimated Project Cost	\$49,478,000
Allocation thru FY20	\$31,701,000
Allocations for FY21	0
President's Budget for FY22	0
House Report for FY22	0
Senate Report for FY22	0
Balance to Complete After FY22	0

**U.S. ARMY CORPS OF ENGINEERS – LOS ANGELES DISTRICT**

915 WILSHIRE BLVD., SUITE 930, LOS ANGELES, CA 90017

<http://www.spl.usace.army.mil>