



- Confluence of SCR – Looking downstream near the confluence of the SCR



- Confluence of SCR – Looking further upstream than 1

Santa Clara River Watershed Feasibility Study

Harmon Barranca

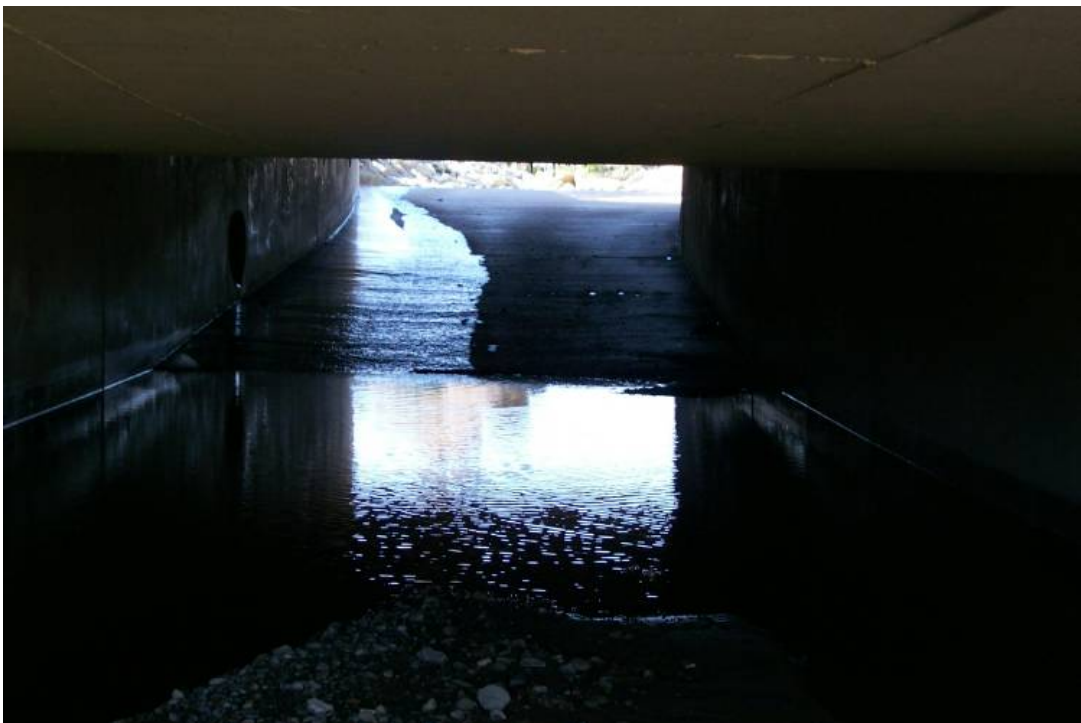
3/3/08



- Confluence of SCR – Looking Upstream near the confluence



- North Bank and Elba – Downstream side of culvert looking upstream



- North Bank and Elba – Downstream side of culvert looking upstream – shows slope break under road

Santa Clara River Watershed Feasibility Study

Harmon Barranca

3/3/08



- North Bank and Elba –Upstream side of culvert looking downstream



- North Bank and Elba –Upstream side of culvert looking upstream



- Railroad – Downstream end of RR bridge looking upstream



- Railroad –Upstream end of RR bridge looking downstream



- Railroad – Downstream end of drop structure looking upstream



- Bristol Street – Downstream end of culvert looking upstream



- Bristol Street – Upstream end of culvert looking downstream

Santa Clara River Watershed Feasibility Study

Harmon Barranca

3/3/08



- Bristol Street – Upstream end of culvert looking upstream



- Ralston Street – Downstream side of culvert looking upstream



- Ralston Street – Upstream side of culvert looking upstream



- Telephone Street –Downstream side of culvert looking downstream



- Telephone Street – Downstream of culvert looking upstream



- Telephone Street – Upstream side of culvert looking downstream



- Highway 126 – Looking at detention and berm at upstream end of HWY 126



- Highway 126 – Looking at upstream end of culvert looking downstream

Santa Clara River Watershed Feasibility Study

Harmon Barranca

3/3/08



- Highway 126 –Upstream end of culvert looking upstream



- Highway 126 – Looking at downstream end of culvert, looking upstream

Santa Clara River Watershed Feasibility Study

Harmon Barranca

3/3/08



- Highway 126 – Looking at downstream from downstream end of culvert



- Telegraph Road – Upstream side of culvert looking upstream



- Telegraph Road – Upstream side of culvert looking downstream



- Telegraph Road – Downstream side of bridge looking upstream – Cannot find culvert exit



- Telegraph Road – Downstream side of bridge looking downstream



- Foothill Road – Downstream side of tributary culvert looking downstream



- Foothill Road – Downstream side of culvert looking upstream at bank

Santa Clara River Watershed Feasibility Study

Harmon Barranca

3/3/08



- Foothill Road –Downstream side of culvert looking upstream



- Foothill Road –Downstream side of culvert looking downstream

Santa Clara River Watershed Feasibility Study

Harmon Barranca

3/3/08



- Foothill Road – Upstream side of culvert looking downstream



- Foothill Road – Upstream side of culvert looking upstream

Santa Clara River Watershed Feasibility Study

Harmon Barranca

3/3/08



- Foothill Road – Inside culvert looking downstream



- Foothill Road – Downstream side of culvert looking upstream