

Santa Clara River Watershed Feasibility Study
Chiquito Canyon
11/19/08



- Railroad Bridge – Looking downstream from upstream side



- Railroad Bridge - Looking downstream from bridge

Santa Clara River Watershed Feasibility Study
Chiquito Canyon
11/19/08



- Highway 126 - Looking downstream from upstream side



- Highway 126 - Looking upstream from downstream side

Santa Clara River Watershed Feasibility Study
Chiquito Canyon
11/19/08



- Old Road - Looking upstream from downstream side



- Old Road - Looking downstream from upstream side

Santa Clara River Watershed Feasibility Study
Chiquito Canyon
11/19/08



- Old Road -Looking upstream



- Chiquito Canyon Road 1 - Looking downstream from upstream side

Santa Clara River Watershed Feasibility Study
Chiquito Canyon
11/19/08



- Chiquito Canyon Road 1 – Looking upstream



- Chiquito Canyon Road 1 – Looking upstream from downstream side

Santa Clara River Watershed Feasibility Study
Chiquito Canyon
11/19/08



- Chiquito Canyon Road 1 - Looking downstream



- Lincoln Avenue - Looking downstream

Santa Clara River Watershed Feasibility Study
Chiquito Canyon
11/19/08



- Lincoln Avenue – Looking upstream from downstream side (CMP buried)



- Lincoln Avenue - Looking upstream

Santa Clara River Watershed Feasibility Study
Chiquito Canyon
11/19/08



- Lincoln Avenue – Looking at dip crossing, upstream side

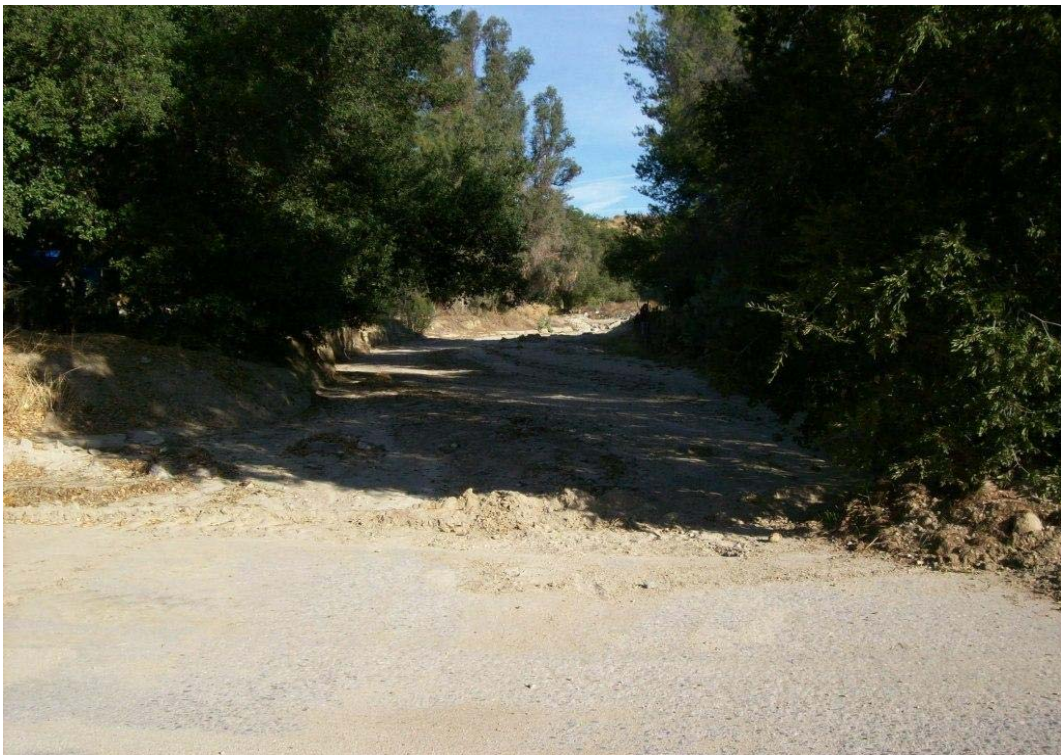


- Madison Street - Looking downstream

Santa Clara River Watershed Feasibility Study
Chiquito Canyon
11/19/08



- Madison Street – Looking upstream from downstream side



- Madison Street - Looking upstream

Santa Clara River Watershed Feasibility Study
Chiquito Canyon
11/19/08



- Madison Street - Looking at top of dip crossing



- Taylor Street - Looking downstream

Santa Clara River Watershed Feasibility Study
Chiquito Canyon
11/19/08



- Taylor Street - Looking upstream from downstream side



- Taylor Street - Looking upstream

Santa Clara River Watershed Feasibility Study
Chiquito Canyon
11/19/08



- Taylor Street - Looking at dip crossing



- Chicago Canyon Road 2- Looking upstream from downstream

Santa Clara River Watershed Feasibility Study
Chiquito Canyon
11/19/08



- Chicago Canyon Road 2 - Looking downstream



- Chicago Canyon Road 2 - Looking downstream from upstream side

Santa Clara River Watershed Feasibility Study
Chiquito Canyon
11/19/08



- Chicago Canyon Road 2 - Looking upstream



- Wood Bridge (Downstream of Parker Avenue) - Looking upstream from downstream side

Santa Clara River Watershed Feasibility Study
Chiquito Canyon
11/19/08



- Wood Bridge crossing (Downstream of Parker Avenue) – Looking downstream from upstream side



- Parker Avenue – Looking upstream from downstream side of culvert

Santa Clara River Watershed Feasibility Study
Chiquito Canyon
11/19/08



- Parker Avenue - Looking downstream



- Parker Avenue - Looking downstream from upstream side of culvert

Santa Clara River Watershed Feasibility Study
Chiquito Canyon
11/19/08

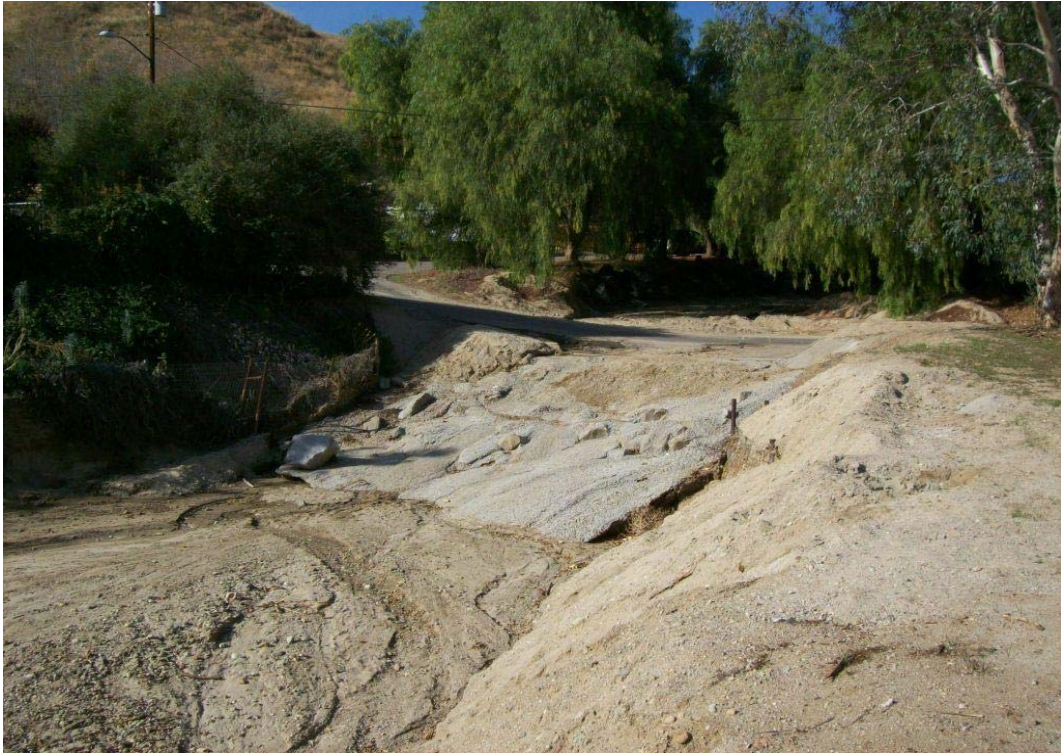


- Parker Avenue - Looking upstream



- Parker Avenue - Drop structure, downstream side of crossing

Santa Clara River Watershed Feasibility Study
Chiquito Canyon
11/19/08



- Kensington Road - Downstream side of dip crossing



- Kensington Road - Looking downstream

Santa Clara River Watershed Feasibility Study
Chiquito Canyon
11/19/08



- Kensington Road - Looking upstream



- Kensington Road - Looking at dip crossing

Santa Clara River Watershed Feasibility Study
Chiquito Canyon
11/19/08



- San Martinez Road 1 - Looking downstream from upstream side



- San Martinez Road 1 - Looking upstream

Santa Clara River Watershed Feasibility Study
Chiquito Canyon
11/19/08



- San Martinez Road 1 - Looking upstream from downstream side



- San Martinez Road 1 - Looking downstream

Santa Clara River Watershed Feasibility Study
Chiquito Canyon
11/19/08



- Verdale Avenue - Looking downstream from upstream side



- Verdale Avenue - Looking upstream

Santa Clara River Watershed Feasibility Study
Chiquito Canyon
11/19/08



- Verdale Avenue – Looking upstream from downstream side



- Verdale Avenue - Looking downstream

Santa Clara River Watershed Feasibility Study
Chiquito Canyon
11/19/08



- Delwood - Looking upstream from downstream side



- Delwood - Looking downstream

Santa Clara River Watershed Feasibility Study
Chiquito Canyon
11/19/08



- Delwood - Looking upstream



- Delwood - Looking upstream from downstream side

Santa Clara River Watershed Feasibility Study
Chiquito Canyon
11/19/08



- San Martinez Road 2 – Looking downstream from upstream side of crossing



- San Martinez Road 2 - Looking upstream

Santa Clara River Watershed Feasibility Study
Chiquito Canyon
11/19/08



- San Martinez Road 2 - Looking upstream from downstream side of crossing



- San Martinez Road 2 - Looking downstream