



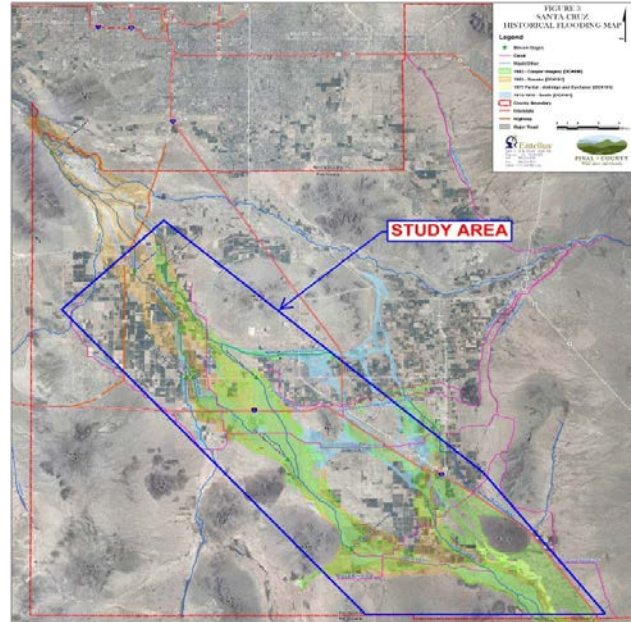
Lower Santa Cruz River, AZ

Investigations

U.S. ARMY CORPS OF ENGINEERS

BUILDING STRONG.

LOCATION AND DESCRIPTION: The Santa Cruz River begins in Southern Arizona, turning south, through a 35-mile loop in northern Mexico before re-entering the United States near Nogales, Arizona. The Santa Cruz River flooding impacts Pinal County, the City of Maricopa, and two Native American Tribes. Major flood events occurred in 1983 and 1993, which impacted residences, businesses, schools, agriculture, and transportation infrastructure. The damage from these floods was widespread forcing aerial evacuations, bridge closures, stream erosion, channel migration and significant sediment deposition. The Santa Cruz River Data Collection report found that 34 major flood events have occurred since the late 1800s, roughly one every four years. Six of the seven largest flood events have occurred since the 1960s. This area is now one of the fastest growing communities in Arizona. Repeat flooding, similar to that of 1983, could result in an estimated \$186 million in damages. The study will investigate watershed issues and opportunities for flood risk management.



As of: 21 Mar 17

AUTHORIZATION: Flood Control Act of 1938

ACTIVITIES FOR FY 2017: Funds will be used to complete the Tentatively Selected Plan Milestone (scheduled 2017).

FY18 PLANNED ACCOMPLISHMENTS: Funds would be used to continue the feasibility phase of the study

ISSUES AND OTHER INFORMATION: The study is being transitioned to the Mississippi Valley Division (scope/budget/schedule) this FY per HQUSACE memo 10 Feb 2017. The non-Federal Sponsor, stakeholder and Congressional interface will remain with the Los Angeles District.

CONGRESSIONAL INTEREST: Senators Flake and McCain; Congresspersons O'Halleran (AZ-1) and Grijalva (AZ-3)

FINANCIAL SUMMARY:

FEASIBILITY

Estimated Federal Cost	\$1,700,000
Estimated Non-Federal Cost	\$1,500,000
Total Estimated Project Cost	\$3,200,000
Allocation thru FY16	\$1,000,000
Allocation for FY17	\$400,000
President's Budget for FY18	TBD
House Report for FY18	TBD
Senate Report for FY18	TBD
Balance to Complete After FY18	\$300,000

U.S. ARMY CORPS OF ENGINEERS – LOS ANGELES DISTRICT

915 WILSHIRE BLVD., SUITE 930, LOS ANGELES, CA 90017

<http://www.spl.usace.army.mil>