



SPECIAL PUBLIC NOTICE

City of Corona – 5th Annual Mud Run at Corona Airport, June 20, 2015

**U.S. ARMY CORPS OF ENGINEERS
LOS ANGELES DISTRICT**

BUILDING STRONG®

Public Notice No.: SPL-2015-CHB-4-Corona Airport Mach 1 Mud Run on June 20, 2015

Comment Period: May 7-22, 2015

Project Manager: Carvel Bass

NOTICE OF PREPARATION ENVIRONMENTAL ASSESSMENT

This is to inform the general public that the United States Army Corps of Engineers, Los Angeles District (Corps) has preliminarily determined that the following project proposal could be adequately evaluated under the National Environmental Policy Act (NEPA) through conducting an Environmental Assessment (EA).

Proposal Title **City of Corona – 5th Annual Mud Run at Corona Airport, June 20, 2015**

Proposed Federal Action

The Corps, Asset Management Division, is reviewing a request for a special event by its Recreation lessee at Prado Flood Control Basin. The City of Corona wishes to hold the 5th annual Mach 1 Mud Run (“Mud Run”) on June 20, 2015, at the Corona Municipal Airport which is located on Federally-owned properties within the Prado Flood Control Basin, Riverside County, California. The event anticipates 2,000-3,000 participants and would include several obstacles throughout the course which is annually located at the Airport and at the adjacent, abandoned percolation pond area immediately east of the Airport. The event would also host food, beverage, and entertainment booths onsite. Parking will be \$5.00. All events will occur at locations above Prado’s 10-year flood pool return elevation.

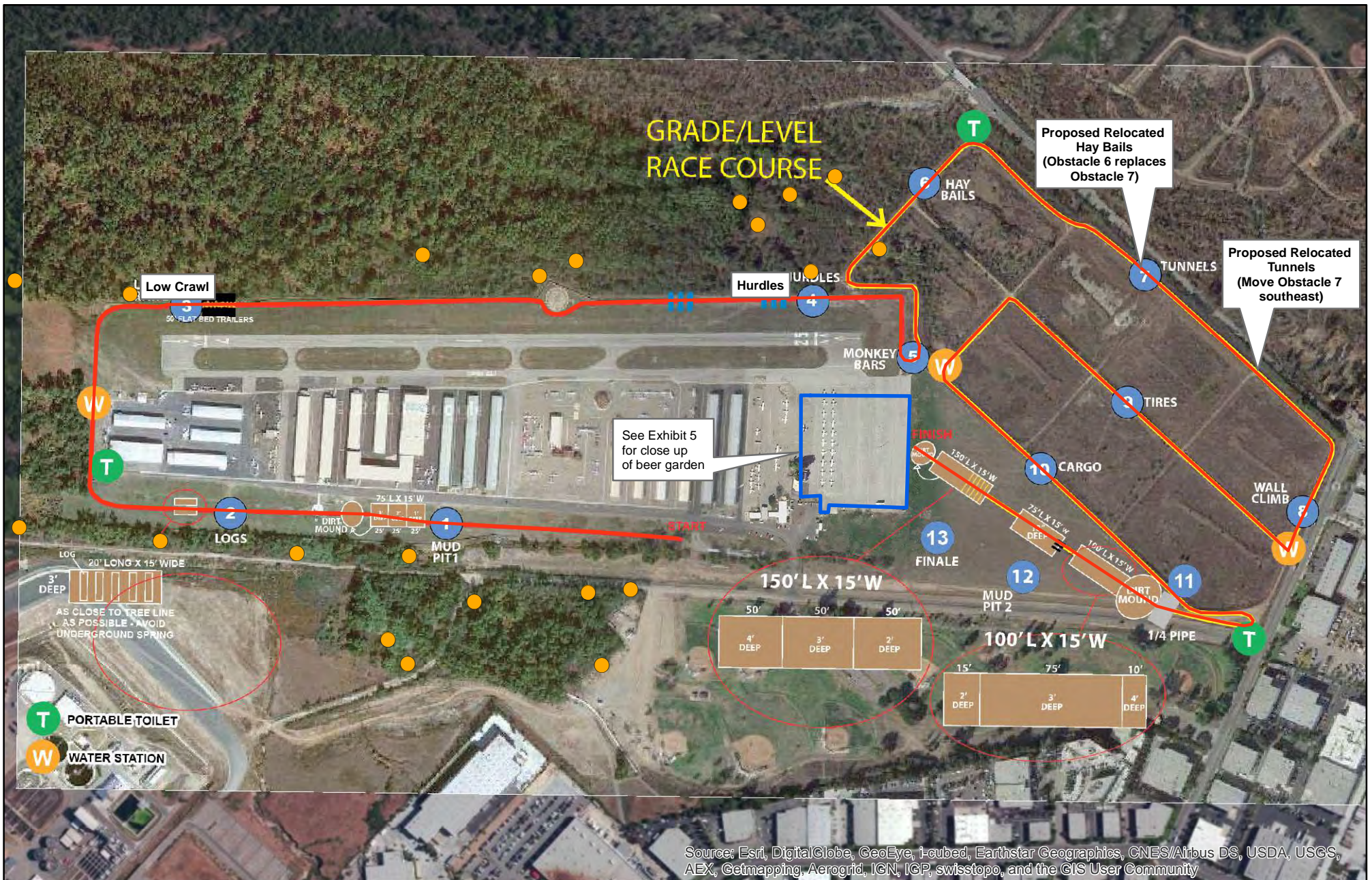
Prior to the event, the City is conducting biological monitoring for any least Bell’s vireo territories which may be located adjacent to but outside fenced areas of the proposed Mud Run, and will make any adjustments necessary to Event features, in a manner to avoid adverse impact to the species.

A draft Environmental Assessment has been prepared and will be posted at the Corps and Corona City public websites. The Corps will accept comments regarding this event during the period May 7-22, 2015.

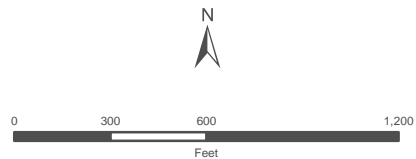
Location The proposed subject area includes Federal lands located within the Prado Flood Control Basin Dam, Riverside County, California. The Municipal Airport is located within southwest Prado Basin, east of the Dam and within the Santa Ana River and Temescal Creek watershed, on Corps lands leased to Corona for Recreation

Public Involvement The Corps is inviting the general public to submit comments on potential environmental impacts that could result from implementation of the proposal. The public comment period on preparation of an EA for the proposal described above will extend from **May 7-22, 2015**, and the Corps will consider all submissions received on or postmarked by May 22. Please direct emailed or written comments to Carvel Bass, at carvel.h.bass@usace.army.mil or at 915 Wilshire Boulevard, Suite 930, Los Angeles, CA, 90017. If you have questions or would like additional information, please contact Carvel Bass, Ecologist, Asset Management Division, US Army Corps of Engineers, at (213) 452-3392.

The Corps will actively consider any comments timely received. The results of this consideration would be reflected in a memorandum for record placed in the Administrative Record, unless consideration of the comments was reflected directly in the EA, either through a modification of the document prompted by the comments or an appendix to the EA articulating responses to the comments. Once the EA is complete and if a FONSI is determined to be appropriate based upon the analysis contained in the EA, pursuant to the last clause of 33 CFR § 230.11, a separate notification will be sent to concerned agencies, organizations and to the interested public stating that FONSI is available for review. If significant effects on the quality of the human environment are subsequently identified and can not be mitigated to a less than significant level, the Corps will initiate preparation of an EIS and afford the public opportunities to participate in the environmental review process.



- Mud Run Course
- Proposed Beer Garden
- 2014 LBV Territory Extrapolated from 2014 Least Bell's Vireo and Southwestern Willow Flycatcher Territories Map



CORONA MUD RUN
Corona Mud Run Obstacle/LBV Territories

GLENN LUKOS ASSOCIATES



Exhibit 4



Proposed Beer Garden

FT FT FT FT FT

PAINT

BEER

AIRSTREAM

STAGE

1st

CROSS

WC

PODS
PODS
PODS

SHOWERS SHOWERS SHOWERS

WC

VENDORS

CORONA MUD RUN

Proposed Beer Garden Location

GLENN LUKOS ASSOCIATES

Exhibit 5

