

Figures:

Figure 1, Vicinity Map

Figure 2A, Project Location Map

Figure 2B, Project Location Map

Figure 3, Least Bell's Vireo Habitat and Jurisdictional Waters



Figure 1
Vicinity Map
Pine Avenue Extension

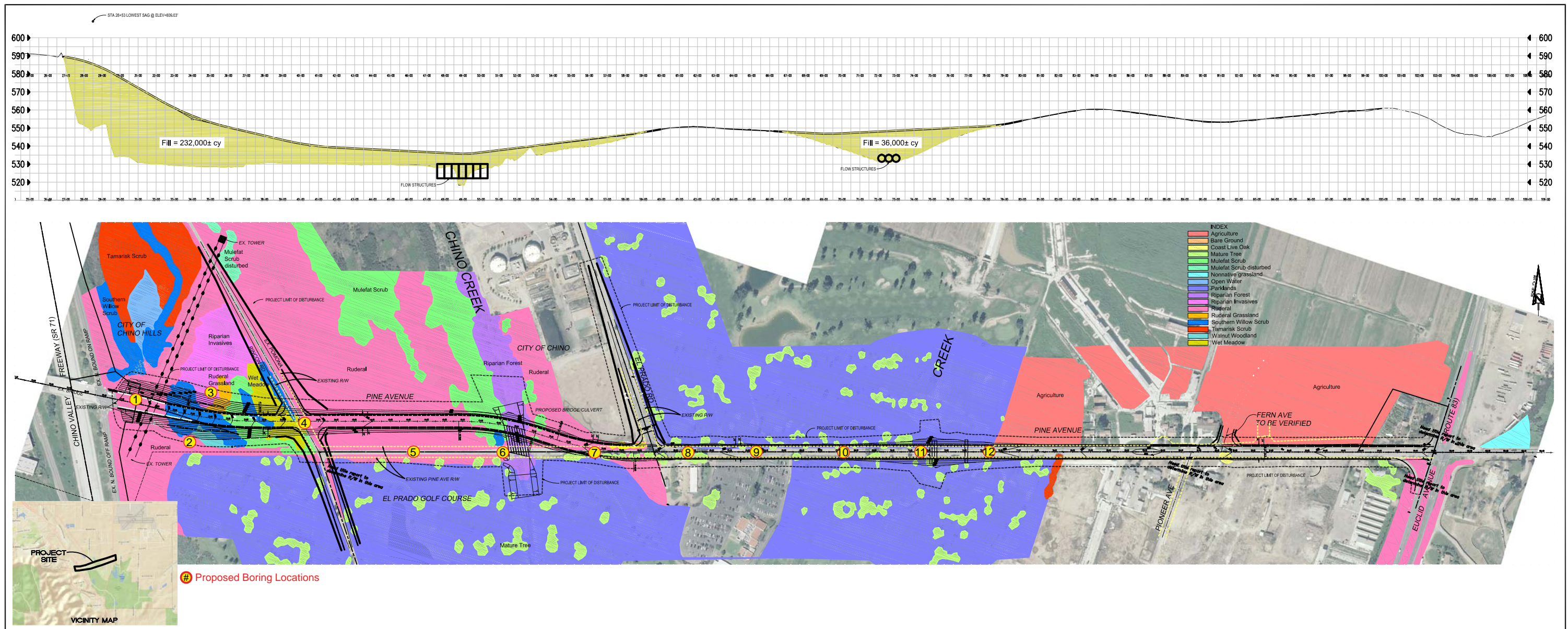
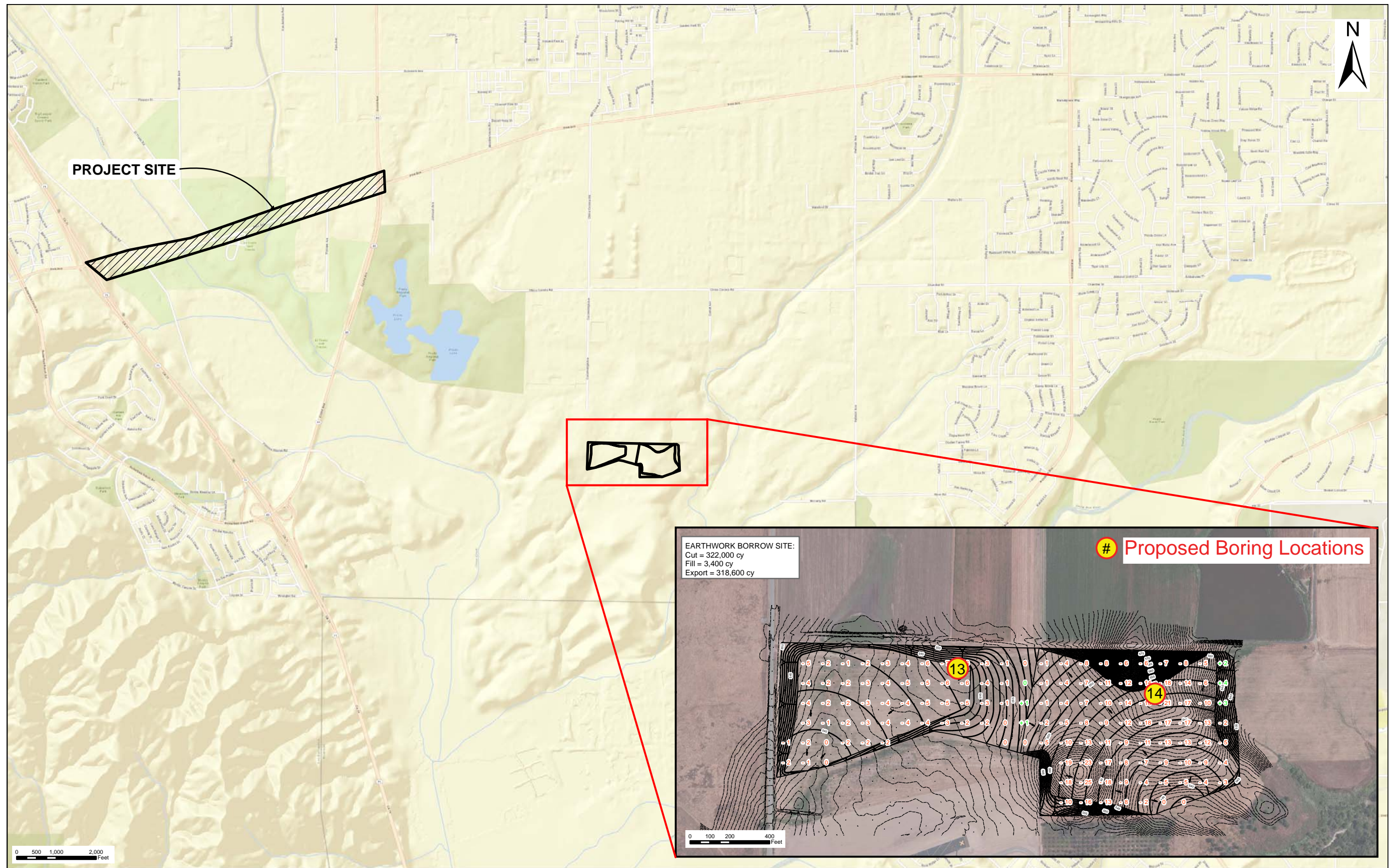


Figure 2A
Project Location Map
Pine Avenue Extension

K:\live\GIS\Projects\Huit Zolars\00566_11\mxd\02015\Jan\Fig02b_project_location.at Date: 2/3/2015 19316



Source: Huitt-Zolars (2013)

Figure 2B
Project Location Map
Pine Avenue Extension



Figure 3
Least Bell's Vireo Habitat and Jurisdictional Waters
Pine Avenue Extension

Appendix A:

Wetland Determination Data Form

WETLAND DETERMINATION DATA FORM – Arid West Region

Project/Site: Pine Ave - Box 2 City/County: Chino/San Bernardino Sampling Date: 1-23-2015
 Applicant/Owner: City of Chino State: CA Sampling Point: SP-1
 Investigator(s): Marisa Flores + Zack West Section, Township, Range: T2S, R8W, Sec 36
 Landform (hillslope, terrace, etc.): edge of basin Local relief (concave, convex, none): none Slope (%): <1%
 Subregion (LRR): C Lat: _____ Long: _____ Datum: _____
 Soil Map Unit Name: Sorrento clay loam, 0 to 2 percent NWI classification: _____
 Are climatic / hydrologic conditions on the site typical for this time of year? Yes ☒ No _____ (If no, explain in Remarks.)
 Are Vegetation N, Soil N, or Hydrology N significantly disturbed? Are "Normal Circumstances" present? Yes ☒ No _____
 Are Vegetation N, Soil N, or Hydrology N naturally problematic? (If needed, explain any answers in Remarks.)

SUMMARY OF FINDINGS – Attach site map showing sampling point locations, transects, important features, etc.

Hydrophytic Vegetation Present?	Yes _____ No <u>X</u>	Is the Sampled Area within a Wetland?	Yes _____ No <u>X</u>
Hydric Soil Present?	Yes _____ No <u>X</u>		
Wetland Hydrology Present?	Yes _____ No <u>X</u>		
Remarks:			

VEGETATION – Use scientific names of plants.

Tree Stratum (Plot size: _____)	Absolute % Cover	Dominant Species?	Indicator Status	Dominance Test worksheet:	
1. _____				Number of Dominant Species That Are OBL, FACW, or FAC:	<u>1</u> (A)
2. _____				Total Number of Dominant Species Across All Strata:	<u>3</u> (B)
3. _____				Percent of Dominant Species That Are OBL, FACW, or FAC:	<u>33</u> (A/B)
4. _____					
				Prevalence Index worksheet:	
Sapling/Shrub Stratum (Plot size: <u>10'</u>)				Total % Cover of:	Multiply by:
1. <u>Rumex crispus</u>	<u>30</u>	<u>Y</u>	<u>FAC</u>	OBL species	<u>5</u> x 1 = <u>5</u>
2. _____				FACW species	<u>30</u> x 2 = <u>60</u>
3. _____				FAC species	<u>30</u> x 3 = <u>90</u>
4. _____				FACU species	<u>30</u> x 4 = <u>120</u>
5. _____				UPL species	_____ x 5 = _____
				Column Totals:	<u>65</u> (A) <u>220</u> (B)
Herb Stratum (Plot size: <u>5'</u>)				Prevalence Index = B/A = <u>3.38</u>	
1. <u>Bristly ox tongue</u>	<u>20</u>	<u>Y</u>	<u>FACU</u>	Hydrophytic Vegetation Indicators:	
2. <u>Conium maculatum</u>	<u>5</u>	<u>N</u>	<u>FACW</u>	— Dominance Test is >50%	
3. <u>Galium aparine</u>	<u>10</u>	<u>Y</u>	<u>FACU</u>	— Prevalence Index is ≤3.0 ¹	
4. _____				— Morphological Adaptations ¹ (Provide supporting data in Remarks or on a separate sheet)	
5. _____				— Problematic Hydrophytic Vegetation ¹ (Explain)	
6. _____					
7. _____					
8. _____					
				¹ Indicators of hydric soil and wetland hydrology must be present, unless disturbed or problematic.	
Woody Vine Stratum (Plot size: _____)				Hydrophytic Vegetation Present?	
1. _____				Yes _____ No <u>X</u>	
2. _____					
% Bare Ground in Herb Stratum <u>55</u> % Cover of Biotic Crust <u>0</u>					
Remarks:					

SOIL

Sampling Point: SP-1

Profile Description: (Describe to the depth needed to document the indicator or confirm the absence of indicators.)

Depth (inches)	Matrix		Redox Features				Texture	Remarks
	Color (moist)	%	Color (moist)	%	Type ¹	Loc ²		
0-13	5Y 3/2	100					clay loam	
13-18	5Y 3/2	20					clay loam	
13-18	5YR 2.5/1	80					clay loam	
18-32	5YR 2.5/1	100%					clay loam	

¹Type: C=Concentration, D=Depletion, RM=Reduced Matrix, CS=Covered or Coated Sand Grains.²Location: PL=Pore Lining, M=Matrix.

Hydric Soil Indicators: (Applicable to all LRRs, unless otherwise noted.)

Indicators for Problematic Hydric Soils³:

- ☐ Histosol (A1)
☐ Histic Epipedon (A2)
☐ Black Histic (A3)
☐ Hydrogen Sulfide (A4)
☐ Stratified Layers (A5) (LRR C)
☐ 1 cm Muck (A9) (LRR D)
☐ Depleted Below Dark Surface (A11)
☐ Thick Dark Surface (A12)
☐ Sandy Mucky Mineral (S1)
☐ Sandy Gleyed Matrix (S4)

- ☐ Sandy Redox (S5)
☐ Stripped Matrix (S6)
☐ Loamy Mucky Mineral (F1)
☐ Loamy Gleyed Matrix (F2)
☐ Depleted Matrix (F3)
☐ Redox Dark Surface (F6)
☐ Depleted Dark Surface (F7)
☐ Redox Depressions (F8)
☐ Vernal Pools (F9)

- ☐ 1 cm Muck (A9) (LRR C)
☐ 2 cm Muck (A10) (LRR B)
☐ Reduced Vertic (F18)
☐ Red Parent Material (TF2)
☐ Other (Explain in Remarks)

³Indicators of hydrophytic vegetation and wetland hydrology must be present, unless disturbed or problematic.

Restrictive Layer (if present):

Type: _____
 Depth (inches): _____

Hydric Soil Present? Yes _____ No ☒

Remarks:

HYDROLOGY

Wetland Hydrology Indicators:

Primary Indicators (minimum of one required; check all that apply)

- ☐ Surface Water (A1)
☐ High Water Table (A2)
☐ Saturation (A3)
☐ Water Marks (B1) (Nonriverine)
☐ Sediment Deposits (B2) (Nonriverine)
☐ Drift Deposits (B3) (Nonriverine)
☐ Surface Soil Cracks (B6)
☐ Inundation Visible on Aerial Imagery (B7)
☐ Water-Stained Leaves (B9)

- ☐ Salt Crust (B11)
☐ Biotic Crust (B12)
☐ Aquatic Invertebrates (B13)
☐ Hydrogen Sulfide Odor (C1)
☐ Oxidized Rhizospheres along Living Roots (C3)
☐ Presence of Reduced Iron (C4)
☐ Recent Iron Reduction in Tilled Soils (C6)
☐ Thin Muck Surface (C7)
☐ Other (Explain in Remarks)

Secondary Indicators (2 or more required)

- ☐ Water Marks (B1) (Riverine)
☐ Sediment Deposits (B2) (Riverine)
☐ Drift Deposits (B3) (Riverine)
☐ Drainage Patterns (B10)
☐ Dry-Season Water Table (C2)
☐ Crayfish Burrows (C8)
☐ Saturation Visible on Aerial Imagery (C9)
☐ Shallow Aquitard (D3)
☐ FAC-Neutral Test (D5)

Field Observations:

Surface Water Present? Yes _____ No ☒ Depth (inches): _____
 Water Table Present? Yes _____ No ☒ Depth (inches): _____
 Saturation Present? Yes ☒ No _____ Depth (inches): 0-
 (includes capillary fringe)

Wetland Hydrology Present? Yes _____ No ☒

Describe Recorded Data (stream gauge, monitoring well, aerial photos, previous inspections), if available:

Remarks:

At 16" the soils were heavy clay loam and served as an aquiclude. Soils above 16" were saturated.

WETLAND DETERMINATION DATA FORM – Arid West Region

Project/Site: Pine Ave - Bare 2 City/County: Chino/San Bernardino Sampling Date: 1-23-2015
 Applicant/Owner: _____ State: CA Sampling Point: Sp-2
 Investigator(s): Marisa Flores and Zack West Section, Township, Range: T2S, R8W, Sec 36
 Landform (hillslope, terrace, etc.): edge of basin Local relief (concave, convex, none): none Slope (%): ≤1
 Subregion (LRR): C Lat: _____ Long: _____ Datum: _____
 Soil Map Unit Name: Sorrento clay loam, 0-2 percent NWI classification: _____
 Are climatic / hydrologic conditions on the site typical for this time of year? Yes ☒ No _____ (If no, explain in Remarks.)
 Are Vegetation N, Soil N, or Hydrology N significantly disturbed? Are "Normal Circumstances" present? Yes ☒ No _____
 Are Vegetation N, Soil N, or Hydrology N naturally problematic? (If needed, explain any answers in Remarks.)

SUMMARY OF FINDINGS – Attach site map showing sampling point locations, transects, important features, etc.

Hydrophytic Vegetation Present?	Yes _____ No <input checked="" type="checkbox"/>	Is the Sampled Area within a Wetland? Yes _____ No <input checked="" type="checkbox"/>
Hydric Soil Present?	Yes <input checked="" type="checkbox"/> No _____	
Wetland Hydrology Present?	Yes <input checked="" type="checkbox"/> No _____	
Remarks:		

VEGETATION – Use scientific names of plants.

Tree Stratum (Plot size: <u>30'</u>)	Absolute % Cover	Dominant Species?	Indicator Status	Dominance Test worksheet: Number of Dominant Species That Are OBL, FACW, or FAC: <u>1</u> (A) Total Number of Dominant Species Across All Strata: <u>3</u> (B) Percent of Dominant Species That Are OBL, FACW, or FAC: <u>33</u> (A/B)
1. _____				
2. _____				
3. _____				
4. _____				
		= Total Cover		Prevalence Index worksheet: Total % Cover of: _____ Multiply by: OBL species _____ x 1 = _____ FACW species _____ x 2 = _____ FAC species <u>30</u> x 3 = <u>90</u> FACU species <u>35</u> x 4 = <u>140</u> UPL species <u>20</u> x 5 = <u>100</u> Column Totals: <u>85</u> (A) <u>330</u> (B) Prevalence Index = B/A = <u>3.88</u>
		= Total Cover		
		= Total Cover		
		= Total Cover		
		= Total Cover		
		= Total Cover		Hydrophytic Vegetation Indicators: <input type="checkbox"/> Dominance Test is >50% <input type="checkbox"/> Prevalence Index is ≤3.0 ¹ <input type="checkbox"/> Morphological Adaptations ¹ (Provide supporting data in Remarks or on a separate sheet) <input type="checkbox"/> Problematic Hydrophytic Vegetation ¹ (Explain)
		= Total Cover		
		= Total Cover		
		= Total Cover		
		= Total Cover		
		= Total Cover		Hydrophytic Vegetation Present? Yes _____ No <input checked="" type="checkbox"/>
		= Total Cover		
		= Total Cover		
		= Total Cover		
		= Total Cover		
		= Total Cover		Hydrophytic Vegetation Present? Yes _____ No <input checked="" type="checkbox"/>
		= Total Cover		
		= Total Cover		
		= Total Cover		
		= Total Cover		
		= Total Cover		Hydrophytic Vegetation Present? Yes _____ No <input checked="" type="checkbox"/>
		= Total Cover		
		= Total Cover		
		= Total Cover		
		= Total Cover		
		= Total Cover		Hydrophytic Vegetation Present? Yes _____ No <input checked="" type="checkbox"/>
		= Total Cover		
		= Total Cover		
		= Total Cover		
		= Total Cover		
		= Total Cover		Hydrophytic Vegetation Present? Yes _____ No <input checked="" type="checkbox"/>
		= Total Cover		
		= Total Cover		
		= Total Cover		
		= Total Cover		
		= Total Cover		Hydrophytic Vegetation Present? Yes _____ No <input checked="" type="checkbox"/>
		= Total Cover		
		= Total Cover		
		= Total Cover		
		= Total Cover		
		= Total Cover		Hydrophytic Vegetation Present? Yes _____ No <input checked="" type="checkbox"/>
		= Total Cover		
		= Total Cover		
		= Total Cover		
		= Total Cover		
		= Total Cover		Hydrophytic Vegetation Present? Yes _____ No <input checked="" type="checkbox"/>
		= Total Cover		
		= Total Cover		
		= Total Cover		
		= Total Cover		
		= Total Cover		Hydrophytic Vegetation Present? Yes _____ No <input checked="" type="checkbox"/>
		= Total Cover		
		= Total Cover		
		= Total Cover		
		= Total Cover		
		= Total Cover		Hydrophytic Vegetation Present? Yes _____ No <input checked="" type="checkbox"/>
		= Total Cover		
		= Total Cover		
		= Total Cover		
		= Total Cover		
		= Total Cover		Hydrophytic Vegetation Present? Yes _____ No <input checked="" type="checkbox"/>
		= Total Cover		
		= Total Cover		
		= Total Cover		
		= Total Cover		
		= Total Cover		Hydrophytic Vegetation Present? Yes _____ No <input checked="" type="checkbox"/>
		= Total Cover		
		= Total Cover		
		= Total Cover		
		= Total Cover		
		= Total Cover		Hydrophytic Vegetation Present? Yes _____ No <input checked="" type="checkbox"/>
		= Total Cover		
		= Total Cover		
		= Total Cover		
		= Total Cover		
		= Total Cover		Hydrophytic Vegetation Present? Yes _____ No <input checked="" type="checkbox"/>
		= Total Cover		
		= Total Cover		
		= Total Cover		
		= Total Cover		
		= Total Cover		Hydrophytic Vegetation Present? Yes _____ No <input checked="" type="checkbox"/>
		= Total Cover		
		= Total Cover		
		= Total Cover		
		= Total Cover		
		= Total Cover		Hydrophytic Vegetation Present? Yes _____ No <input checked="" type="checkbox"/>
		= Total Cover		
		= Total Cover		
		= Total Cover		
		= Total Cover		
		= Total Cover		Hydrophytic Vegetation Present? Yes _____ No <input checked="" type="checkbox"/>
		= Total Cover		
		= Total Cover		
		= Total Cover		
		= Total Cover		
		= Total Cover		Hydrophytic Vegetation Present? Yes _____ No <input checked="" type="checkbox"/>
		= Total Cover		
		= Total Cover		
		= Total Cover		
		= Total Cover		
		= Total Cover		Hydrophytic Vegetation Present? Yes _____ No <input checked="" type="checkbox"/>
		= Total Cover		
		= Total Cover		
		= Total Cover		
		= Total Cover		
		= Total Cover		Hydrophytic Vegetation Present? Yes _____ No <input checked="" type="checkbox"/>
		= Total Cover		
		= Total Cover		
		= Total Cover		
		= Total Cover		
		= Total Cover		Hydrophytic Vegetation Present? Yes _____ No <input checked="" type="checkbox"/>
		= Total Cover		
		= Total Cover		
		= Total Cover		
		= Total Cover		
		= Total Cover		Hydrophytic Vegetation Present? Yes _____ No <input checked="" type="checkbox"/>
		= Total Cover		
		= Total Cover		
		= Total Cover		
		= Total Cover		
		= Total Cover		Hydrophytic Vegetation Present? Yes _____ No <input checked="" type="checkbox"/>
		= Total Cover		
		= Total Cover		
		= Total Cover		
		= Total Cover		
		= Total Cover		Hydrophytic Vegetation Present? Yes _____ No <input checked="" type="checkbox"/>
		= Total Cover		
		= Total Cover		
		= Total Cover		
		= Total Cover		
		= Total Cover		Hydrophytic Vegetation Present? Yes _____ No <input checked="" type="checkbox"/>
		= Total Cover		
		= Total Cover		
		= Total Cover		
		= Total Cover		
		= Total Cover		Hydrophytic Vegetation Present? Yes _____ No <input checked="" type="checkbox"/>
		= Total Cover		
		= Total Cover		
		= Total Cover		
		= Total Cover		
		= Total Cover		Hydrophytic Vegetation Present? Yes _____ No <input checked="" type="checkbox"/>
		= Total Cover		
		= Total Cover		
		= Total Cover		
		= Total Cover		
		= Total Cover		Hydrophytic Vegetation Present? Yes _____ No <input checked="" type="checkbox"/>
		= Total Cover		
		= Total Cover		
		= Total Cover		
		= Total Cover		
		= Total Cover		Hydrophytic Vegetation Present? Yes _____ No <input checked="" type="checkbox"/>
		= Total Cover		
		= Total Cover		
		= Total Cover		
		= Total Cover		
		= Total Cover		Hydrophytic Vegetation Present? Yes _____ No <input checked="" type="checkbox"/>
		= Total Cover		
		= Total Cover		
		= Total Cover		
		= Total Cover		
		= Total Cover		Hydrophytic Vegetation Present? Yes _____ No <input checked="" type="checkbox"/>
		= Total Cover		
		= Total Cover		
		= Total Cover		
		= Total Cover		
		= Total Cover		Hydrophytic Vegetation Present? Yes _____ No <input checked="" type="checkbox"/>
		= Total Cover		
		= Total Cover		
		= Total Cover		
		= Total Cover		
		= Total Cover		Hydrophytic Vegetation Present? Yes _____ No <input checked="" type="checkbox"/>
		= Total Cover		
		= Total Cover		
		= Total Cover		
		= Total Cover		
		= Total Cover		Hydrophytic Vegetation Present? Yes _____ No <input checked="" type="checkbox"/>
		= Total Cover		
		= Total Cover		
		= Total Cover		
		= Total Cover		
		= Total Cover		Hydrophytic Vegetation Present? Yes _____ No <input checked="" type="checkbox"/>
		= Total Cover		
		= Total Cover		
		= Total Cover		
		= Total Cover		
		= Total Cover		Hydrophytic Vegetation Present? Yes _____ No <input checked="" type="checkbox"/>
		= Total Cover		
		= Total Cover		
		= Total Cover		
		= Total Cover		
		= Total Cover		Hydrophytic Vegetation Present? Yes _____ No <input checked="" type="checkbox"/>
		= Total Cover		
		= Total Cover		
		= Total Cover		
		= Total Cover		
		= Total Cover		Hydrophytic Vegetation Present? Yes _____ No <input checked="" type="checkbox"/>
		= Total Cover		
		= Total Cover		
		= Total Cover		
		= Total Cover		
		= Total Cover		Hydrophytic Vegetation Present? Yes _____ No <input checked="" type="checkbox"/>
		= Total Cover		
		= Total Cover		
		= Total Cover		
		= Total Cover		
		= Total Cover		Hydrophytic Vegetation Present? Yes _____ No <input checked="" type="checkbox"/>
		= Total Cover		
		= Total Cover		
		= Total Cover		
		= Total Cover		
		= Total Cover		Hydrophytic Vegetation Present? Yes _____ No <input checked="" type="checkbox"/>
		= Total Cover		
		= Total Cover		
		= Total Cover		
		= Total Cover		
		= Total Cover		Hydrophytic Vegetation Present? Yes _____ No <input checked="" type="checkbox"/>
		= Total Cover		
		= Total Cover		
		= Total Cover		
		= Total Cover		
		= Total Cover		Hydrophytic Vegetation Present? Yes _____ No <input checked="" type="checkbox"/>
		= Total Cover		
		= Total Cover		
		= Total Cover		
		= Total Cover		
		= Total Cover		Hydrophytic Vegetation Present? Yes _____ No <input checked="" type="checkbox"/>
		= Total Cover		
		= Total Cover		
		= Total Cover		
		= Total Cover		
		= Total Cover		Hydrophytic Vegetation Present? Yes _____ No <input checked="" type="checkbox"/>
		= Total Cover		
		= Total Cover		
		= Total Cover		
		= Total Cover		
		= Total Cover		Hydrophytic Vegetation Present? Yes _____ No <input checked="" type="checkbox"/>
		= Total Cover		
		= Total Cover		
		= Total Cover		
		= Total Cover		
		= Total Cover		Hydrophytic Vegetation Present? Yes _____ No <input checked="" type="checkbox"/>
		= Total Cover		
		= Total Cover		
		= Total Cover		
		= Total Cover		
		= Total Cover		Hydrophytic Vegetation Present? Yes _____ No <input checked="" type="checkbox"/>
		= Total Cover		
		= Total Cover		
		= Total Cover		
		= Total Cover		
		= Total Cover		Hydrophytic Vegetation Present? Yes _____ No <input checked="" type="checkbox"/>
		= Total Cover		
		= Total Cover		
		= Total Cover		
		= Total Cover		
		= Total Cover		Hydrophytic Vegetation Present? Yes _____ No <input checked="" type="checkbox"/>
		= Total Cover		
		= Total Cover		
		= Total Cover		
		= Total Cover		
		= Total Cover		Hydrophytic Vegetation Present? Yes _____ No <input checked="" type="checkbox"/>
		= Total Cover		
		= Total Cover		
		= Total Cover		
		= Total Cover		
		= Total Cover		Hydrophytic Vegetation Present? Yes _____ No <input checked="" type="checkbox"/>
		= Total Cover		
		= Total Cover		
		= Total Cover		
		= Total Cover		
		= Total Cover		Hydrophytic Vegetation Present? Yes _____ No <input checked="" type="checkbox"/>
		= Total Cover		
		= Total Cover		
		= Total Cover		
		= Total Cover		
		= Total Cover		Hydrophytic Vegetation Present? Yes _____ No <input checked="" type="checkbox"/>
		= Total Cover		
		= Total Cover		
		= Total Cover		
		= Total Cover		
		= Total Cover		Hydrophytic Vegetation Present? Yes _____ No <input checked="" type="checkbox"/>
		= Total Cover		
		= Total Cover		
		= Total Cover		
		= Total Cover		
		= Total Cover		Hydrophytic Vegetation Present? Yes _____ No <input checked="" type="checkbox"/>
		= Total Cover		
		= Total Cover		
		= Total Cover		
		= Total Cover		
		= Total Cover		Hydrophytic Vegetation Present? Yes _____ No <input checked="" type="checkbox"/>
		= Total Cover		
		= Total Cover		
		= Total Cover		
		= Total Cover		
		= Total Cover		Hydrophytic Vegetation Present? Yes _____ No <input checked="" type="checkbox"/>
		= Total Cover		
		= Total Cover		
		= Total Cover		
		= Total Cover		
		= Total Cover		Hydrophytic Vegetation Present? Yes _____ No <input checked="" type="checkbox"/>
		= Total Cover		
		= Total Cover		
		= Total Cover		
		= Total Cover		
		= Total Cover		Hydrophytic Vegetation Present? Yes _____ No <input checked="" type="checkbox"/>
		= Total Cover		
		= Total Cover		
		= Total Cover		
		= Total Cover		
		= Total Cover		Hydrophytic Vegetation Present? Yes _____ No <input checked="" type="checkbox"/>
		= Total Cover		
		= Total Cover		
		= Total Cover		
		= Total Cover		
		= Total Cover		Hydrophytic Vegetation Present? Yes _____ No <input checked="" type="checkbox"/>
		= Total Cover		
		= Total Cover		
		= Total Cover		
		= Total Cover		
		= Total Cover		Hydrophytic Vegetation Present? Yes _____ No <input checked="" type="checkbox"/>
		= Total Cover		
		= Total Cover		
		= Total Cover		
		= Total Cover		
		= Total Cover		Hydrophytic Vegetation Present? Yes _____ No <input checked="" type="checkbox"/>
		=		

Sampling Point: SP 2

[illegible]

HYDROLOGY

Wetland Hydrology Indicators:			
Primary Indicators (minimum of one required; check all that apply)		Secondary Indicators (2 or more required)	
<input type="checkbox"/> Surface Water (A1) <input checked="" type="checkbox"/> High Water Table (A2) <input checked="" type="checkbox"/> Saturation (A3) <input type="checkbox"/> Water Marks (B1) (Nonriverine) <input type="checkbox"/> Sediment Deposits (B2) (Nonriverine) <input type="checkbox"/> Drift Deposits (B3) (Nonriverine) <input type="checkbox"/> Surface Soil Cracks (B6) <input type="checkbox"/> Inundation Visible on Aerial Imagery (B7) <input type="checkbox"/> Water-Stained Leaves (B9)	<input type="checkbox"/> Salt Crust (B11) <input type="checkbox"/> Biotic Crust (B12) <input type="checkbox"/> Aquatic Invertebrates (B13) <input checked="" type="checkbox"/> Hydrogen Sulfide Odor (C1) <input type="checkbox"/> Oxidized Rhizospheres along Living Roots (C3) <input type="checkbox"/> Presence of Reduced Iron (C4) <input type="checkbox"/> Recent Iron Reduction in Tilled Soils (C6) <input type="checkbox"/> Thin Muck Surface (C7) <input type="checkbox"/> Other (Explain in Remarks)	<input type="checkbox"/> Water Marks (B1) (Riverine) <input type="checkbox"/> Sediment Deposits (B2) (Riverine) <input type="checkbox"/> Drift Deposits (B3) (Riverine) <input type="checkbox"/> Drainage Patterns (B10) <input type="checkbox"/> Dry-Season Water Table (C2) <input type="checkbox"/> Crayfish Burrows (C8) <input type="checkbox"/> Saturation Visible on Aerial Imagery (C9) <input type="checkbox"/> Shallow Aquitard (D3) <input type="checkbox"/> FAC-Neutral Test (D5)	
Field Observations:			
Surface Water Present?	Yes <input type="checkbox"/> No <input type="checkbox"/>	Depth (inches):	
Water Table Present?	Yes <input checked="" type="checkbox"/> No <input type="checkbox"/>	Depth (inches):	3
Saturation Present? (includes capillary fringe)	Yes <input checked="" type="checkbox"/> No <input type="checkbox"/>	Depth (inches):	0
Wetland Hydrology Present? Yes <input checked="" type="checkbox"/> No <input type="checkbox"/>			
Describe Recorded Data (stream gauge, monitoring well, aerial photos, previous inspections), if available:			
Remarks:			

WETLAND DETERMINATION DATA FORM – Arid West Region

Project/Site: Pine Ave - bore 2 City/County: Chino / San Bernardino Sampling Date: SP3 1/23/15
 Applicant/Owner: City of Chino State: CA Sampling Point: SP3
 Investigator(s): Marisa Flores and Zack West Section, Township, Range: T2S, R8W, Sec 86
 Landform (hillslope, terrace, etc.): edge of basin Local relief (concave, convex, none): none Slope (%): <1%
 Subregion (LRR): C Lat: _____ Long: _____ Datum: _____
 Soil Map Unit Name: Sorrento clay loam, 0 to 2 percent NWI classification: _____
 Are climatic / hydrologic conditions on the site typical for this time of year? Yes ☒ No _____ (If no, explain in Remarks.)
 Are Vegetation N, Soil N, or Hydrology N significantly disturbed? Are "Normal Circumstances" present? Yes ☒ No _____
 Are Vegetation N, Soil N, or Hydrology N naturally problematic? (If needed, explain any answers in Remarks.)

SUMMARY OF FINDINGS – Attach site map showing sampling point locations, transects, important features, etc.

Hydrophytic Vegetation Present?	Yes <input checked="" type="checkbox"/> No _____	Is the Sampled Area within a Wetland? Yes <input checked="" type="checkbox"/> No _____
Hydric Soil Present?	Yes <input checked="" type="checkbox"/> No _____	
Wetland Hydrology Present?	Yes <input checked="" type="checkbox"/> No _____	
Remarks:		

VEGETATION – Use scientific names of plants.

Tree Stratum (Plot size: <u>30'</u>)	Absolute % Cover	Dominant Species?	Indicator Status	Dominance Test worksheet: Number of Dominant Species That Are OBL, FACW, or FAC: <u>2</u> (A) Total Number of Dominant Species Across All Strata: <u>2</u> (B) Percent of Dominant Species That Are OBL, FACW, or FAC: <u>100</u> (A/B)
1. _____	_____	_____	_____	
2. _____	_____	_____	_____	
3. _____	_____	_____	_____	
4. _____	_____	_____	_____	
_____ = Total Cover				Prevalence Index worksheet: Total % Cover of: _____ Multiply by: OBL species _____ x 1 = _____ FACW species _____ x 2 = _____ FAC species _____ x 3 = _____ FACU species _____ x 4 = _____ UPL species _____ x 5 = _____ Column Totals: _____ (A) _____ (B) Prevalence Index = B/A = _____
Sapling/Shrub Stratum (Plot size: <u>10'</u>) 1. <u>Typha domingensis</u> <u>50</u> <u>Y</u> <u>OBL</u> 2. <u>Rumex crispus</u> <u>5</u> <u>N</u> <u>FAC</u> 3. <u>Conium maculatum</u> <u>20</u> <u>Y</u> <u>FACW</u> 4. _____ 5. _____ _____ = Total Cover				
Herb Stratum (Plot size: <u>5'</u>) 1. _____ 2. _____ 3. _____ 4. _____ 5. _____ 6. _____ 7. _____ 8. _____ _____ = Total Cover				
Woody Vine Stratum (Plot size: <u>30'</u>) 1. _____ 2. _____ _____ = Total Cover				
% Bare Ground in Herb Stratum <u>100</u> % Cover of Biotic Crust <u>0</u>				
Remarks:				Hydrophytic Vegetation Indicators: <input checked="" type="checkbox"/> Dominance Test is >50% <input type="checkbox"/> Prevalence Index is ≤3.0 ¹ <input type="checkbox"/> Morphological Adaptations ¹ (Provide supporting data in Remarks or on a separate sheet) <input type="checkbox"/> Problematic Hydrophytic Vegetation ¹ (Explain) ¹ Indicators of hydric soil and wetland hydrology must be present, unless disturbed or problematic. Hydrophytic Vegetation Present? Yes <input checked="" type="checkbox"/> No _____

Sampling Point: SP 3

[illegible]

HYDROLOGY

Wetland Hydrology Indicators:		
Primary Indicators (minimum of one required; check all that apply)		Secondary Indicators (2 or more required)
<input type="checkbox"/> Surface Water (A1)	<input type="checkbox"/> Salt Crust (B11)	<input type="checkbox"/> Water Marks (B1) (Riverine)
<input checked="" type="checkbox"/> High Water Table (A2)	<input type="checkbox"/> Biotic Crust (B12)	<input type="checkbox"/> Sediment Deposits (B2) (Riverine)
<input checked="" type="checkbox"/> Saturation (A3)	<input type="checkbox"/> Aquatic Invertebrates (B13)	<input type="checkbox"/> Drift Deposits (B3) (Riverine)
<input type="checkbox"/> Water Marks (B1) (Nonriverine)	<input checked="" type="checkbox"/> Hydrogen Sulfide Odor (C1)	<input type="checkbox"/> Drainage Patterns (B10)
<input type="checkbox"/> Sediment Deposits (B2) (Nonriverine)	<input type="checkbox"/> Oxidized Rhizospheres along Living Roots (C3)	<input type="checkbox"/> Dry-Season Water Table (C2)
<input type="checkbox"/> Drift Deposits (B3) (Nonriverine)	<input type="checkbox"/> Presence of Reduced Iron (C4)	<input type="checkbox"/> Crayfish Burrows (C8)
<input type="checkbox"/> Surface Soil Cracks (B6)	<input type="checkbox"/> Recent Iron Reduction in Tilled Soils (C6)	<input type="checkbox"/> Saturation Visible on Aerial Imagery (C9)
<input type="checkbox"/> Inundation Visible on Aerial Imagery (B7)	<input type="checkbox"/> Thin Muck Surface (C7)	<input type="checkbox"/> Shallow Aquitard (D3)
<input type="checkbox"/> Water-Stained Leaves (B9)	<input type="checkbox"/> Other (Explain in Remarks)	<input type="checkbox"/> FAC-Neutral Test (D5)
Field Observations:		
Surface Water Present?	Yes <input type="checkbox"/> No <input checked="" type="checkbox"/>	Depth (inches): <input type="text"/>
Water Table Present?	Yes <input checked="" type="checkbox"/> No <input type="checkbox"/>	Depth (inches): <input type="text" value="3"/>
Saturation Present?	Yes <input checked="" type="checkbox"/> No <input type="checkbox"/>	Depth (inches): <input type="text" value="2"/>
(includes capillary fringe)		Wetland Hydrology Present? Yes <input checked="" type="checkbox"/> No <input type="checkbox"/>
Describe Recorded Data (stream gauge, monitoring well, aerial photos, previous inspections), if available:		
Remarks:		

WETLAND DETERMINATION DATA FORM – Arid West Region

Project/Site: Pine Ave - Bore 2 City/County: Chino/San Bernardino Sampling Date: 1-23-2015
 Applicant/Owner: City of Chino State: _____ Sampling Point: SP-4
 Investigator(s): Marisa Flores and Zack West Section, Township, Range: T2S, R8W, Sec 36
 Landform (hillslope, terrace, etc.): edge of basin Local relief (concave, convex, none): none Slope (%): <1
 Subregion (LRR): C Lat: _____ Long: _____ Datum: _____
 Soil Map Unit Name: Sorrento clay loam, 0 to 2 percent NWI classification: _____
 Are climatic / hydrologic conditions on the site typical for this time of year? Yes X No _____ (If no, explain in Remarks.)
 Are Vegetation N, Soil N, or Hydrology N significantly disturbed? Are "Normal Circumstances" present? Yes X No _____
 Are Vegetation N, Soil N, or Hydrology N naturally problematic? (If needed, explain any answers in Remarks.)

SUMMARY OF FINDINGS – Attach site map showing sampling point locations, transects, important features, etc.

Hydrophytic Vegetation Present?	Yes _____ No <u>X</u>	Is the Sampled Area within a Wetland? Yes _____ No <u>X</u>
Hydric Soil Present?	Yes _____ No <u>X</u>	
Wetland Hydrology Present?	Yes <u>X</u> No _____	
Remarks:		

VEGETATION – Use scientific names of plants.

Tree Stratum (Plot size: <u>30'</u>)	Absolute % Cover	Dominant Species?	Indicator Status	Dominance Test worksheet: Number of Dominant Species That Are OBL, FACW, or FAC: <u>0</u> (A) Total Number of Dominant Species Across All Strata: <u>0</u> (B) Percent of Dominant Species That Are OBL, FACW, or FAC: <u>0</u> (A/B)
1. _____				
2. _____				
3. _____				
4. _____				
0 = Total Cover				Prevalence Index worksheet: Total % Cover of: _____ Multiply by: OBL species _____ x 1 = _____ FACW species _____ x 2 = _____ FAC species _____ x 3 = _____ FACU species _____ x 4 = _____ UPL species _____ x 5 = _____ Column Totals: _____ (A) _____ (B) Prevalence Index = B/A = _____
Sapling/Shrub Stratum (Plot size: <u>10'</u>) 1. <u>Rumex crisp</u> <u>2</u> <u>N</u> <u>FAC</u> 2. <u>Corium maculatum</u> <u>2</u> <u>N</u> <u>FACU</u> 3. _____ 4. _____ 5. _____				
4 = Total Cover				
Herb Stratum (Plot size: <u>5'</u>) 1. _____ 2. _____ 3. _____ 4. _____ 5. _____ 6. _____ 7. _____ 8. _____				
0 = Total Cover				
Woody Vine Stratum (Plot size: <u>30'</u>) 1. _____ 2. _____ 3. _____ 4. _____ 5. _____ 6. _____ 7. _____ 8. _____				Hydrophytic Vegetation Indicators: _____ Dominance Test is >50% _____ Prevalence Index is ≤3.0 ¹ _____ Morphological Adaptations ¹ (Provide supporting data in Remarks or on a separate sheet) _____ Problematic Hydrophytic Vegetation ¹ (Explain) ¹ Indicators of hydric soil and wetland hydrology must be present, unless disturbed or problematic.
0 = Total Cover				
% Bare Ground in Herb Stratum <u>100</u> % Cover of Biotic Crust <u>0</u>				
Hydrophytic Vegetation Present? Yes _____ No <u>X</u>				
Remarks: <u>Shrub layer does not meet for a layer.</u>				

SOIL

Sampling Point: Sp 4

Profile Description: (Describe to the depth needed to document the indicator or confirm the absence of indicators.)

Depth (inches)	Matrix		Redox Features				Texture	Remarks
	Color (moist)	%	Color (moist)	%	Type ¹	Loc ²		
0-13	5Y 3/2	100					clay loam	
13-24	5Y 2.5/1	100					clay loam	

¹Type: C=Concentration, D=Depletion, RM=Reduced Matrix, CS=Covered or Coated Sand Grains. ²Location: PL=Pore Lining, M=Matrix.

Hydric Soil Indicators: (Applicable to all LRRs, unless otherwise noted.)

Indicators for Problematic Hydric Soils³:

- ☐ Histosol (A1)
☐ Histic Epipedon (A2)
☐ Black Histic (A3)
☐ Hydrogen Sulfide (A4)
☐ Stratified Layers (A5) (LRR C)
☐ 1 cm Muck (A9) (LRR D)
☐ Depleted Below Dark Surface (A11)
☐ Thick Dark Surface (A12)
☐ Sandy Mucky Mineral (S1)
☐ Sandy Gleyed Matrix (S4)

- ☐ Sandy Redox (S5)
☐ Stripped Matrix (S6)
☐ Loamy Mucky Mineral (F1)
☐ Loamy Gleyed Matrix (F2)
☐ Depleted Matrix (F3)
☐ Redox Dark Surface (F6)
☐ Depleted Dark Surface (F7)
☐ Redox Depressions (F8)
☐ Vernal Pools (F9)

- ☐ 1 cm Muck (A9) (LRR C)
☐ 2 cm Muck (A10) (LRR B)
☐ Reduced Vertic (F18)
☐ Red Parent Material (TF2)
☐ Other (Explain in Remarks)

³Indicators of hydrophytic vegetation and wetland hydrology must be present, unless disturbed or problematic.

Restrictive Layer (if present):

Type: _____

Depth (inches): _____

Hydric Soil Present? Yes _____ No ☒

Remarks:

HYDROLOGY

Wetland Hydrology Indicators:

Primary Indicators (minimum of one required; check all that apply)

- ☐ Surface Water (A1)
☐ High Water Table (A2)
☒ Saturation (A3)
☐ Water Marks (B1) (Nonriverine)
☐ Sediment Deposits (B2) (Nonriverine)
☐ Drift Deposits (B3) (Nonriverine)
☐ Surface Soil Cracks (B6)
☐ Inundation Visible on Aerial Imagery (B7)
☐ Water-Stained Leaves (B9)

- ☐ Salt Crust (B11)
☐ Biotic Crust (B12)
☐ Aquatic Invertebrates (B13)
☐ Hydrogen Sulfide Odor (C1)
☐ Oxidized Rhizospheres along Living Roots (C3)
☐ Presence of Reduced Iron (C4)
☐ Recent Iron Reduction in Tilled Soils (C6)
☐ Thin Muck Surface (C7)
☐ Other (Explain in Remarks)

Secondary Indicators (2 or more required)

- ☐ Water Marks (B1) (Riverine)
☐ Sediment Deposits (B2) (Riverine)
☐ Drift Deposits (B3) (Riverine)
☐ Drainage Patterns (B10)
☐ Dry-Season Water Table (C2)
☐ Crayfish Burrows (C8)
☐ Saturation Visible on Aerial Imagery (C9)
☐ Shallow Aquitard (D3)
☐ FAC-Neutral Test (D5)

Field Observations:

Surface Water Present? Yes _____ No ☒ Depth (inches): _____Water Table Present? Yes _____ No ☒ Depth (inches): _____Saturation Present? Yes ☒ No _____ Depth (inches): 13
(includes capillary fringe)Wetland Hydrology Present? Yes ☒ No _____

Describe Recorded Data (stream gauge, monitoring well, aerial photos, previous inspections), if available:

Remarks:

water seeping in above heavy clay loam layer (@ 13")