



SPECIAL PUBLIC NOTICE

PROPOSAL TO PLACE SAND AND GRAVEL AT DOWNSTREAM OPERATIONS AREAS AT WHITTIER NARROWS FLOOD CONTROL BASIN

**U.S. ARMY CORPS OF ENGINEERS
LOS ANGELES DISTRICT**

BUILDING STRONG®

**Public Notice No.: SPL-2014-CHB-11
Comment Period: July 25-August 9, 2014
Project Manager: Carvel Bass**

This is to inform the general public that the United States Army Corps of Engineers, Los Angeles District (Corps) has preliminarily determined that the following project proposal could be adequately evaluated under the National Environmental Policy Act (NEPA) through conducting an Environmental Assessment (EA). The Corps is preparing an EA for a proposal to be undertaken on Operations areas at Whittier Narrows Flood Control Basin. The Corps is inviting the general public to submit comments on potential environmental impacts that could result from implementation of the proposal. A 15-day public comment period on preparation of the EA for this proposal will extend from July 25-August 9, 2014, and the Corps will consider all submissions received on or postmarked by August 9.

Proposal Title: Whittier Narrows Dam – Placement of Sand and Gravel at Downstream Toe

The U.S. Army Corps of Engineers, Los Angeles District, proposes to preposition approximately 600 tons of sand and 600 tons of gravel on Corps Operations-controlled lands located downstream of Whittier Narrows Dam which is managed for flood risk management. Once placed, these materials would be used in the potential case of a short-term need for work at downstream Dam locations. The project would take 6 weeks or less. The materials would remain on site for interim risk reduction use until determined no longer needed.

The proposed work would occur on level, Corps fee-owned Operations land which includes portions of a utility easement, outgranted to Los Angeles Department of Water and Power; the site is located east of Rosemead Boulevard, west of a residential neighborhood, and near at the Dam's southwest toe at the western Whittier Narrows Flood Control Basin, Pico Rivera, CA. The proposed work is requested by the Corps' Engineering Division in order to prepare for potential emergency Operations work, should it be needed. This public notice shall be circulated at the Corps public websites and provided to local residents and outgrantees during July-August, 2014.

Proposed construction activities at this location would clear a linear area of approximately 150,000 square feet located in the area bounded by the Dam, Streamland Park, Rosemead Boulevard, and a housing tract near the Rosemead-Gallatin intersection. All existing Park facilities will remain available to patrons. The route of project vehicles would take includes leaving Rosemead Boulevard and turning to Gallatin and then onto a dirt access road to access the work area; this roadway and entrance would also serve as the exit area for work vehicles. All work vehicles would remain on this portion of the Corps property (please see Figure). Minor construction noise would temporarily affect the locale during a maximum time of up to 2 weeks of ground preparation and up to 4 weeks of sand/gravel placement, although a shorter time is possible. Noise levels and other safety issues will be regulated in accordance with Federal and local workplace ordinances, and impacts to Park areas and the adjacent residential area would be minimal. Traffic and aesthetic impacts will be limited to Corps-owned lands at this location. The sand and gravel would remain at this placement site for up to eight years or for less time, if to be used for a future construction purpose which at this time is undefined.

Wildlife, listed species, and historic resources would not be adversely impacted by this procedure. Wildlife does not require use of these areas and listed species and their constituent Critical Habitat elements are not present at this location.

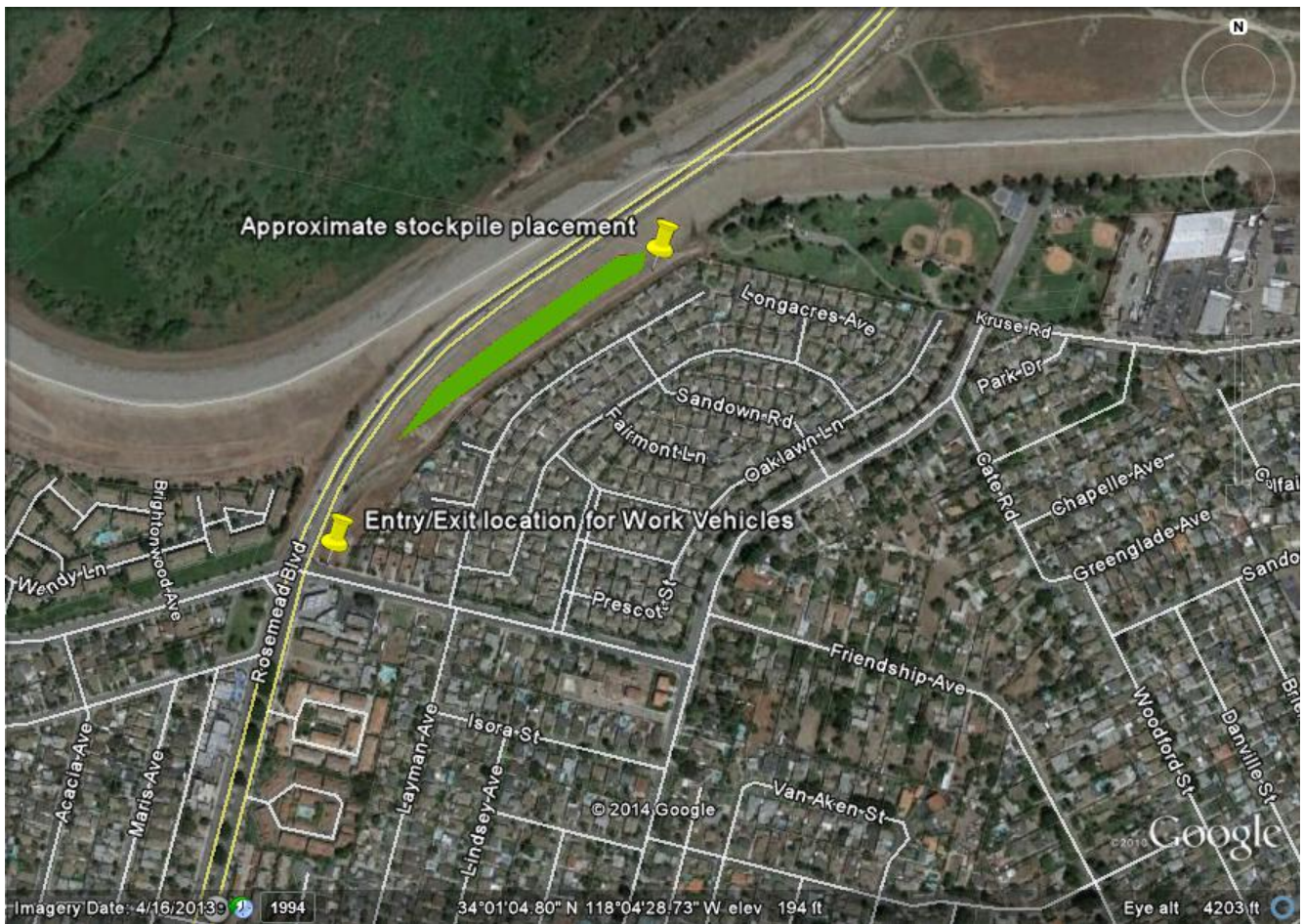
The Corps has engaged in early coordination with the City of Pico Rivera and with Los Angeles City Department of Water and Power, both easement holders with the Corps of Engineers at this location.

Public Involvement

The Corps is inviting the general public to submit comments on potential environmental impacts that could result from implementation of the proposal. The public comment period on preparation of a draft EA and FONSI, for the proposal described above, will extend from July 25-August 9, 2014, and the Corps will consider all submissions received on or postmarked by August 9. Please direct emailed or written comments to Carvel Bass, at carvel.h.bass@usace.army.mil or at 915 Wilshire Boulevard, Ste. 11098, Los Angeles, CA, 90017. If you have questions or would like additional information, please contact Carvel Bass, Ecologist, Asset Management Division, US Army Corps of Engineers, at (213) 452-3392.

The Corps will actively consider any comments timely received. The results of this consideration would be reflected in a memorandum for record placed in the Administrative Record, unless consideration of the comments is reflected directly in the EA either through modification of the document prompted by the comments or an appendix to the EA articulating responses to the comments. If significant effects to the quality of the human environment have been identified and can not be mitigated to a less than significant level, the Corps will initiate preparation of an EIS and will afford the public opportunities to participate in the environmental review process.

Following the 15-day comment period, if a FONSI is determined to be appropriate based upon the analysis contained in the EA, then a notification which contains the Final EA and FONSI will be provided for their information to concerned agencies, organizations and the interested public.



This aerial photograph indicates general areas, proposed for access off Rosemead Blvd. and for placement of sand and gravel, for the purpose of prepositioning materials on Corps land in advance of potential short-term needs in the future for flood risk management and maintenance activities.

All work would occur on Corps fee-owned lands, including upon a utility easement where Los Angeles City DWP transmission towers would be protected from project-related damage by strategic placement of K-rails near the base of each tower.