



PUBLIC NOTICE

U.S. ARMY CORPS OF ENGINEERS
LOS ANGELES DISTRICT

BUILDING STRONG®

Riverside Levees Rehabilitation Project

The U.S. Army Corps of Engineers (Corps) announces availability of the Riverside Levees Rehabilitation Project Draft Environmental Assessment (EA) and Draft 404(b)(1) Analysis for public review and comments.

The project would repair damages to the Riverside Levees, a federally constructed levee system. The Riverside Levees are on the Santa Ana River in Riverside County, California. See project map below.

High flows from past storms through this reach of the river as well as migration and impingement of the low-flow channel against the levees resulted in damages requiring repair.

The overall goals of the repair project are to (1) improve resistance to scour and erosion to better maintain the existing level flood risk minimization, and (2) reduce future in-channel maintenance requirements to avoid and minimize impacts to biological and aquatic resources within the river.

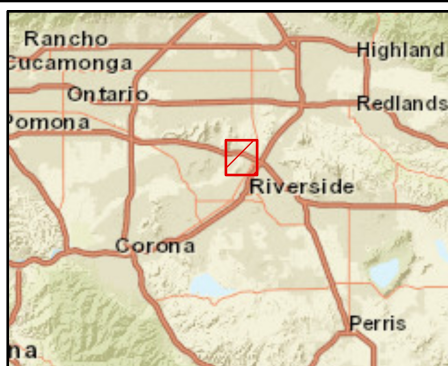
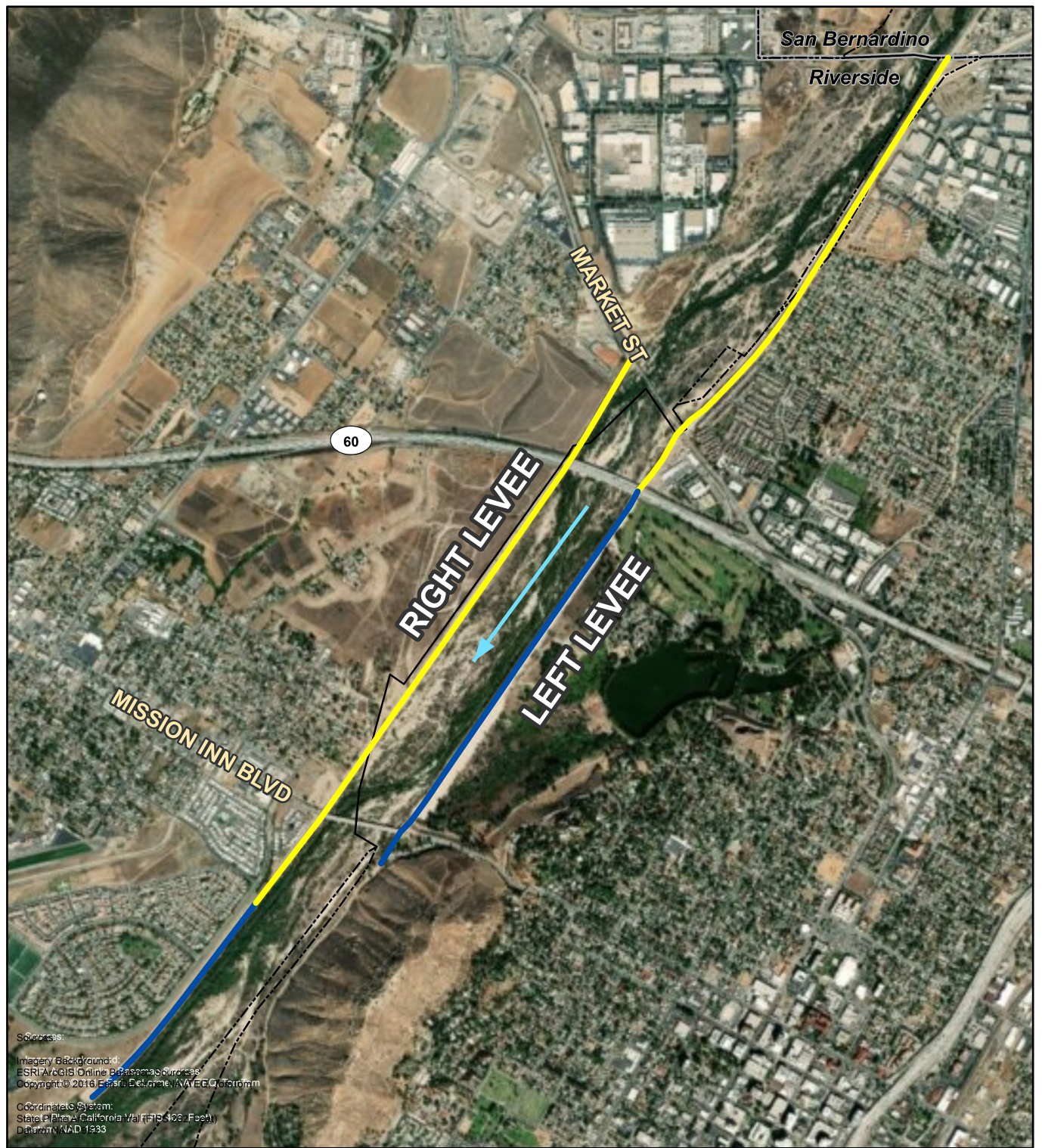
The reach of river where damages occurred is designated as critical habitat for the Santa Ana sucker (*Catostomus santaanae*), a fish species protected under the Endangered Species Act. The Corps and the U.S. Fish and Wildlife Service are coordinating closely to minimize impacts to the fish and its habitat during construction and subsequent in-channel maintenance activities. Reduction of future in-channel maintenance requirements would benefit both the fish and its habitat.

An initial scoping notice pursuant to the National Environmental Policy Act (NEPA) circulated on February 12, 2020 announcing preparation of a draft EA. A draft EA has now been prepared. In addition, pursuant to the Clean Water Act, a draft 404(b)(1) Analysis has been prepared for discharges of fill within waters of the U.S. With the notice, the Corps now solicits public review and comments on the two draft documents.

Comments will be accepted from December 9, 2021 to December 23, 2021. Comments can be submitted electronically to: kenneth.wong@usace.army.mil

Alternatively, comments can be mailed to:

U.S. Army Corps of Engineers
Riverside Levees Repair Project
Attn: Kenneth Wong, CESPL-PD-R
915 Wilshire Blvd., Los Angeles, CA 90017.



Legend

- County Boundary
- City Boundary
- Federal Levees**
 - Damaged
 - Undamaged

0 1,000 2,000 3,000 4,000 Feet
1 inch = 0.5 miles



FIGURE 1
RIVERSIDE LEVEES
VICINITY MAP



U.S. ARMY CORPS OF ENGINEERS
LOS ANGELES DISTRICT