

d1
16210
27 January 1978

Navigable waters of the United States; Tecolote Creek

*San Diego
County*

Legal Officer

Chief, Aids to Navigation Branch
Via :Chief, Operations Division

Ref : (a) Your memo 16594 of 22 Dec 1977
(b) COMDTINST 16210.1A

1. Based upon the information provided in reference (a) it is my opinion that the waters of Tecolote Creek from its mouth to the site of the proposed bridge are navigable waters of the United States.
2. Accordingly you may exercise jurisdiction for the purposes of the Bridge Administration Program.
3. A record of this finding will be maintained in accordance with reference (b) by the Legal Officer.

K. W. MIRMAK

Copy to:
COMDT (G-LMI/81)

UNITED STATES GOVERNMENT

DEPARTMENT OF TRANSPORTATION
UNITED STATES COAST GUARD

Memorandum

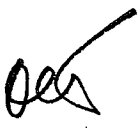
16594

DATE: 22 December 1977

SUBJECT: Navigability Determination Tecolote Creek; documentation on

FROM : Chief, Aids to Navigation Branch

TO : District Legal Officer

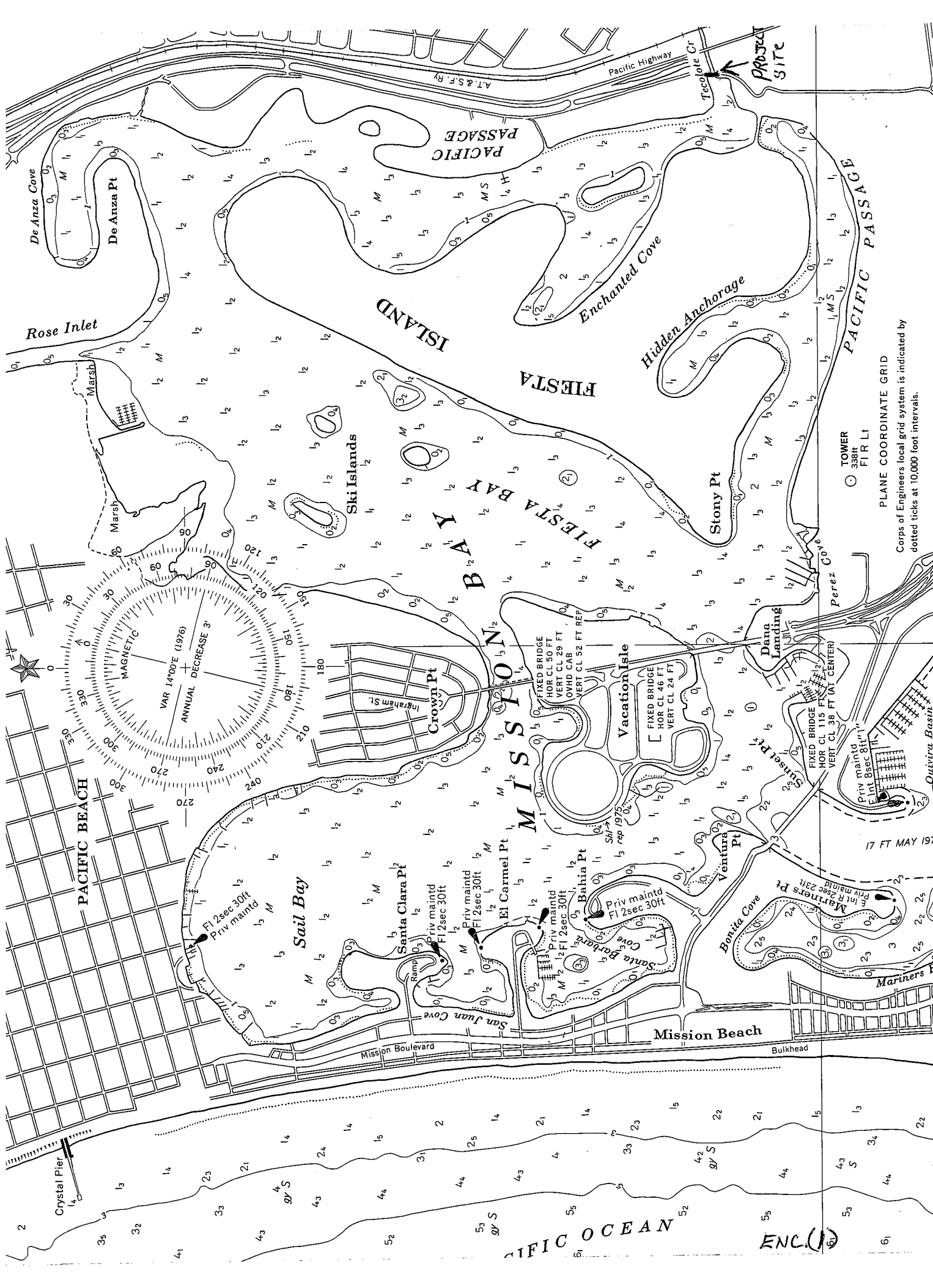
VIA: Chief, Operations Division 

REF: (a) COMDT (G-WBR-2) ltr (77-10) dtd 19 Aug 1977

1. The city of San Diego has applied for a Coast Guard Bridge Permit to construct a bicycle/pedestrian bridge over Tecolote Creek in San Diego, CA. The project site occurs at the Tecolote Creek outlet to Mission Bay. (Enclosure 1). The mouth of Tecolote Creek is subject to the ebb and flow of the tide.
2. This office is processing the permit application for the bicycle/pedestrian bridge. In accordance with reference (a), documentation is requested on the status of Tecolote Creek at the project site (mouth).
3. A chartlet of Mission Bay and the project site is enclosed.


B. F. THOMSON III

Encl: (1) Chartlet



TOWER
338 ft
FIR LI

PLANE COORDINATE GRID
Corps of Engineers local grid system is indicated by dotted ticks at 10,000 foot intervals.

17 FT MAY 1971

ENC. (1)