



APPROVED JURISDICTIONAL DETERMINATION
U.S. Army Corps of Engineers, Los Angeles District
Application No. SPL - 2008 - 0816 -

- Boundary of area surveyed for jurisdictional waters of the United States
- Ordinary High Water Mark
- Waters of the United States
- Wetland Boundary
(If legend is blank no wetlands occur in survey area)

400' Scale 2019 Date of Photograph
No Site Visit by Corps (Y/N) Date: N/A
March 24, 2021 Date Delineation issued by Corps
M. Langley Corps Project Manager
Sheet 1 of 23

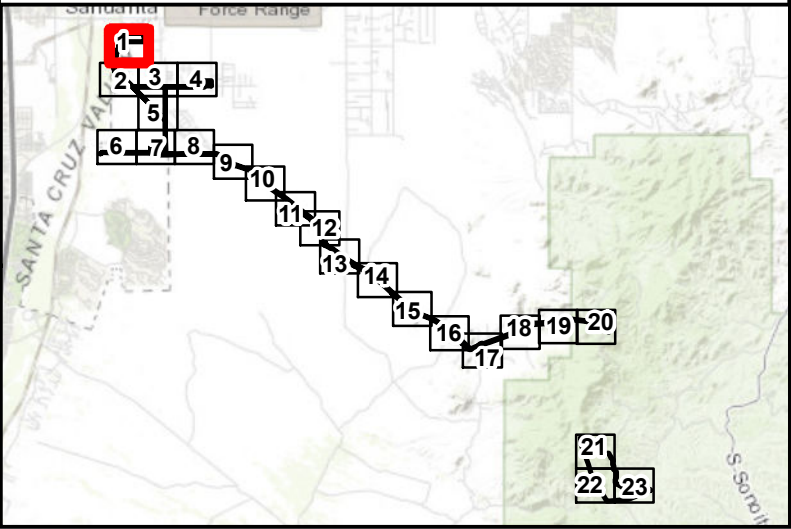
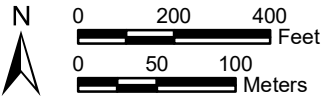
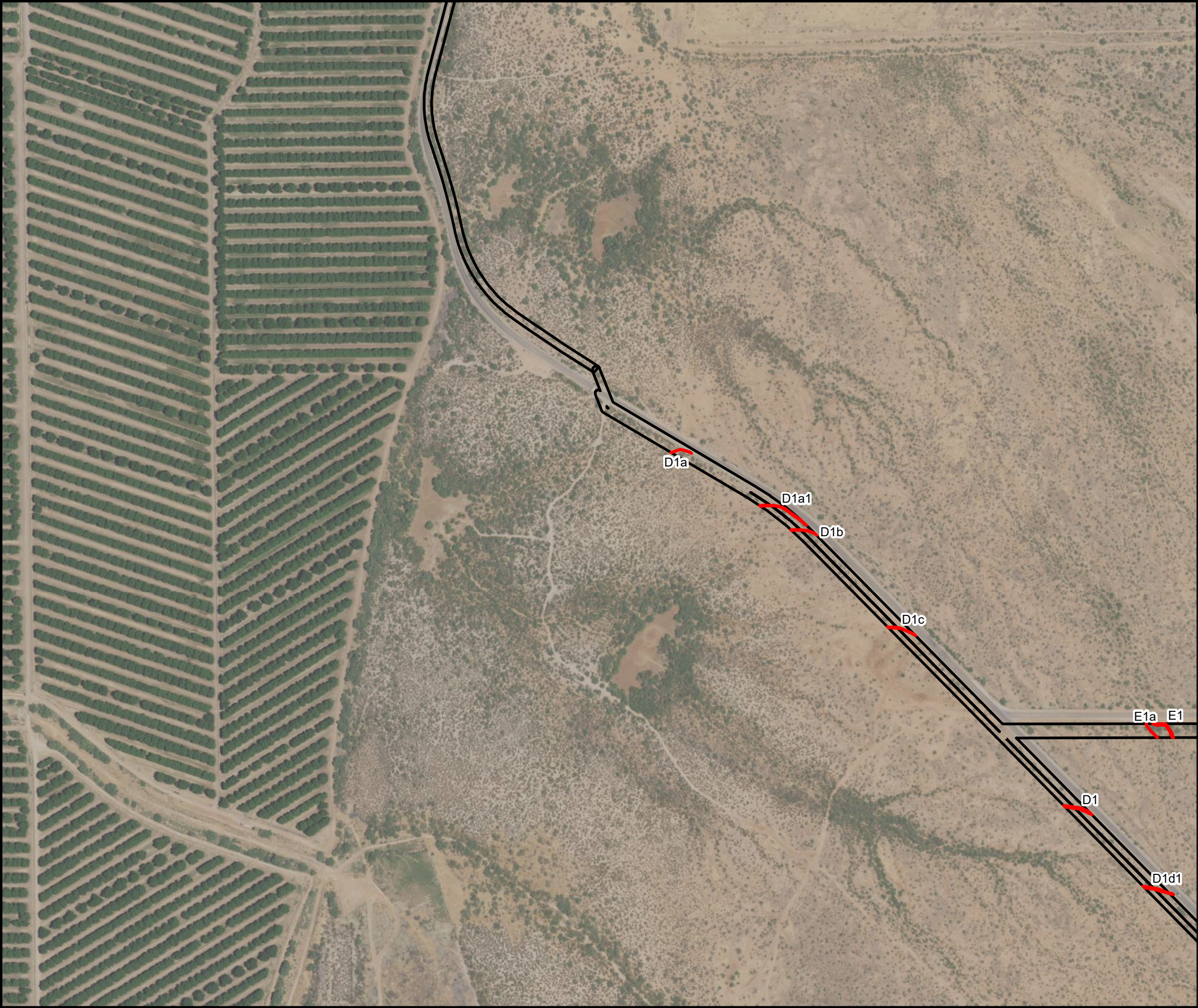


Image Source: ArcGIS Online, USA NAIP 2019, Natural Color and World Topographic Map



ROSEMONT COPPER COMPANY
Rosemont Copper Project
Utility Corridor and West Side Operations
Jurisdictional Determination
Corps File No. SPL-2008-0816



APPROVED JURISDICTIONAL DETERMINATION
U.S. Army Corps of Engineers, Los Angeles District
Application No. SPL - 2008 - 0816 -

Boundary of area surveyed for jurisdictional waters of the United States

Ordinary High Water Mark

400'

Scale

2019

Date of Photograph

No

Site Visit by Corps (Y/N)

Date: N/A

March 24, 2021

Date Delineation issued by Corps

M. Langley

Corps Project Manager

Sheet 2 of 23

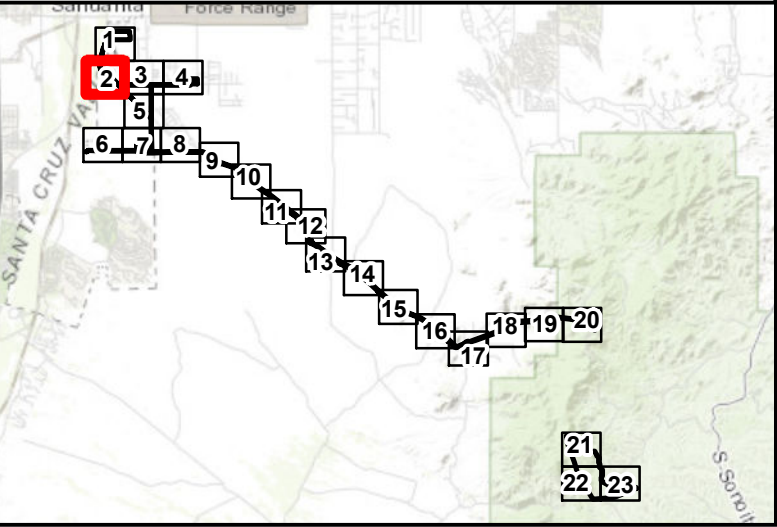


Image Source: ArcGIS Online, USA NAIP 2019, Natural Color and World Topographic Map

N

0 200 400 Feet

0 50 100 Meters

WestLand Resources

ROSEMONT COPPER COMPANY

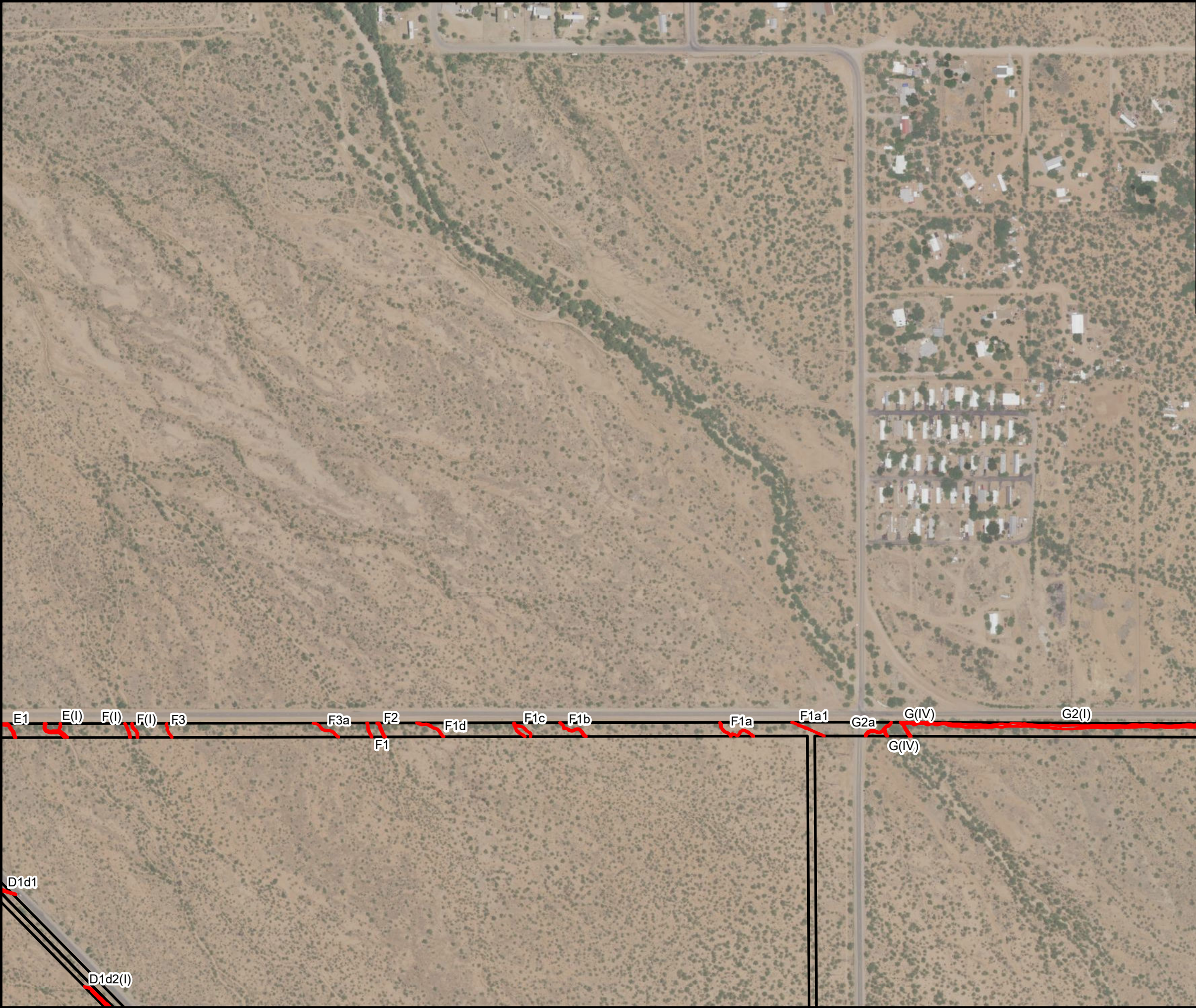
Rosemont Copper Project

Utility Corridor and West Side Operations

Jurisdictional Determination

Corps File No. SPL-2008-0816

Sheet 2 of 23



APPROVED JURISDICTIONAL DETERMINATION
U.S. Army Corps of Engineers, Los Angeles District
Application No. SPL - 2008 - 0816 -

Boundary of area surveyed for jurisdictional waters of the United States

Ordinary High Water Mark

400'

Scale

2019

Date of Photograph

No

Site Visit by Corps (Y/N)

Date: N/A

March 24, 2021

Date Delineation issued by Corps

M. Langley

Corps Project Manager

Sheet 3 of 23

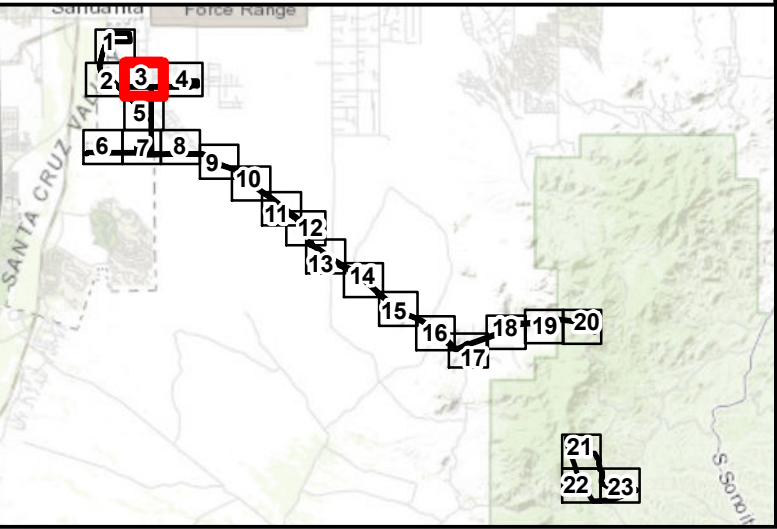



Image Source: ArcGIS Online, USA NAIP 2019, Natural Color and World Topographic Map

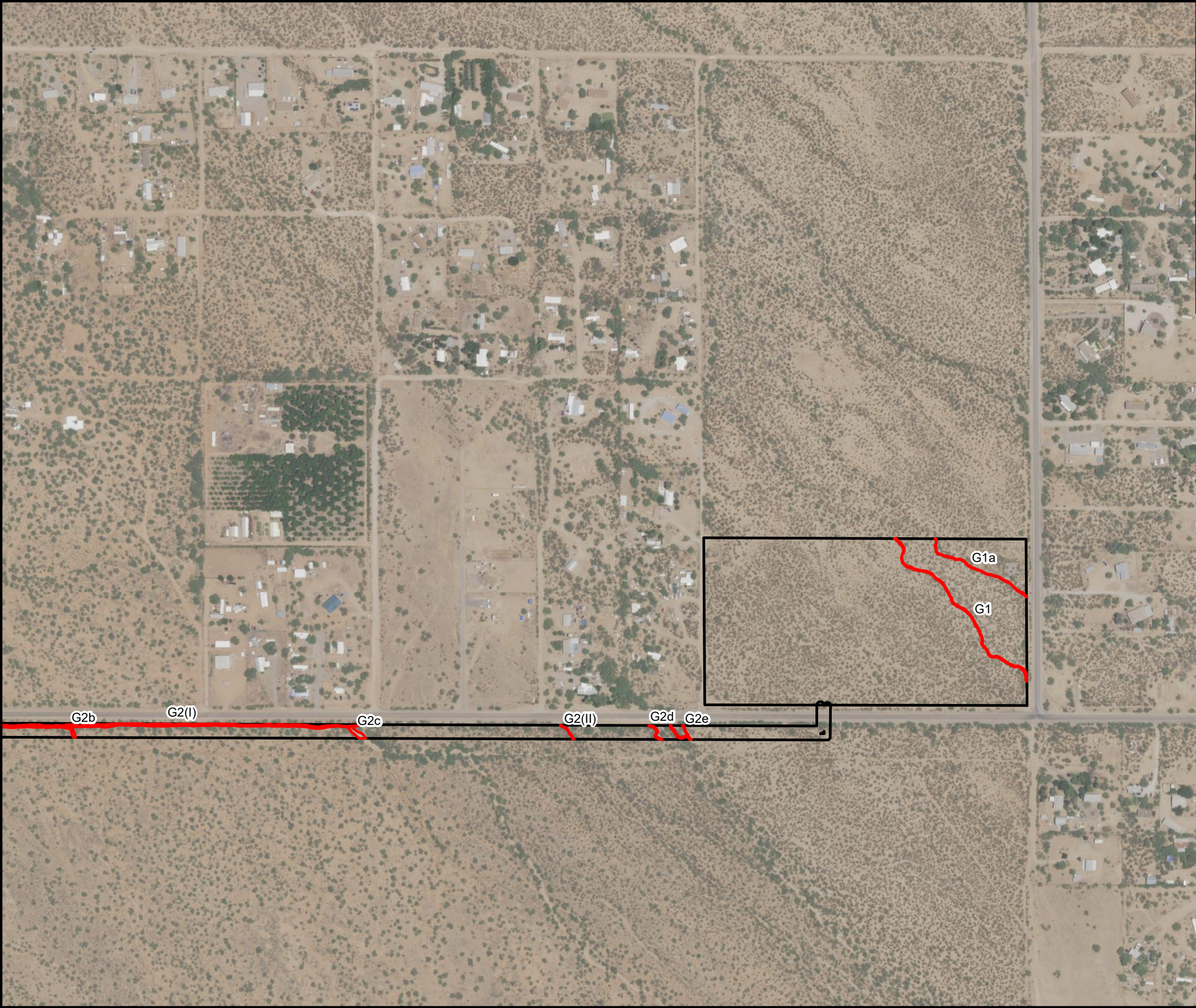
N

0 200 400 Feet

0 50 100 Meters


WestLand Resources

ROSEMONT COPPER COMPANY
Rosemont Copper Project
Utility Corridor and West Side Operations
Jurisdictional Determination
Corps File No. SPL-2008-0816
Sheet 3 of 23



APPROVED JURISDICTIONAL DETERMINATION
U.S. Army Corps of Engineers, Los Angeles District
Application No. SPL - 2008 - 0816 -

Boundary of area surveyed for jurisdictional waters of the United States

Ordinary High Water Mark

Waters of the United States

Wetland Boundary
(If legend is blank no wetlands occur in survey area)

400'

Scale

2019

Date of Photograph

No

Site Visit by Corps (Y/N)

Date:

N/A

March 24, 2021

Date Delineation issued by Corps

M. Langley

Corps Project Manager

Sheet

4

of

23

Image Source: ArcGIS Online, USA NAIP 2019, Natural Color and World Topographic Map

ROSEMONT COPPER COMPANY

Rosemont Copper Project
Utility Corridor and West Side Operations
Jurisdictional Determination
Corps File No. SPL-2008-0816

Sheet 4 of 23



APPROVED JURISDICTIONAL DETERMINATION
U.S. Army Corps of Engineers, Los Angeles District
Application No. SPL - 2008 - 0816 -

Boundary of area surveyed for jurisdictional waters of the United States

Ordinary High Water Mark

Waters of the United States

Wetland Boundary
(If legend is blank no wetlands occur in survey area)

400' Scale 2019 Date of Photograph

No Site Visit by Corps (Y/N) Date: N/A

March 24, 2021 Date Delineation issued by Corps

M. Langley Corps Project Manager

Sheet 5 of 23

Image Source: ArcGIS Online, USA NAIP 2019, Natural Color and World Topographic Map

WestLand Resources

ROSEMONT COPPER COMPANY

Rosemont Copper Project
Utility Corridor and West Side Operations
Jurisdictional Determination
Corps File No. SPL-2008-0816

Sheet 5 of 23



APPROVED JURISDICTIONAL DETERMINATION
U.S. Army Corps of Engineers, Los Angeles District
Application No. SPL - 2008 - 0816 -

Boundary of area surveyed for jurisdictional waters of the United States

Ordinary High Water Mark

Waters of the United States

Wetland Boundary
(If legend is blank no wetlands occur in survey area)

400'

Scale

2019

Date of Photograph

No

Site Visit by Corps (Y/N)

Date: N/A

March 24, 2021

Date Delineation issued by Corps

M. Langley

Corps Project Manager

Sheet 6 of 23

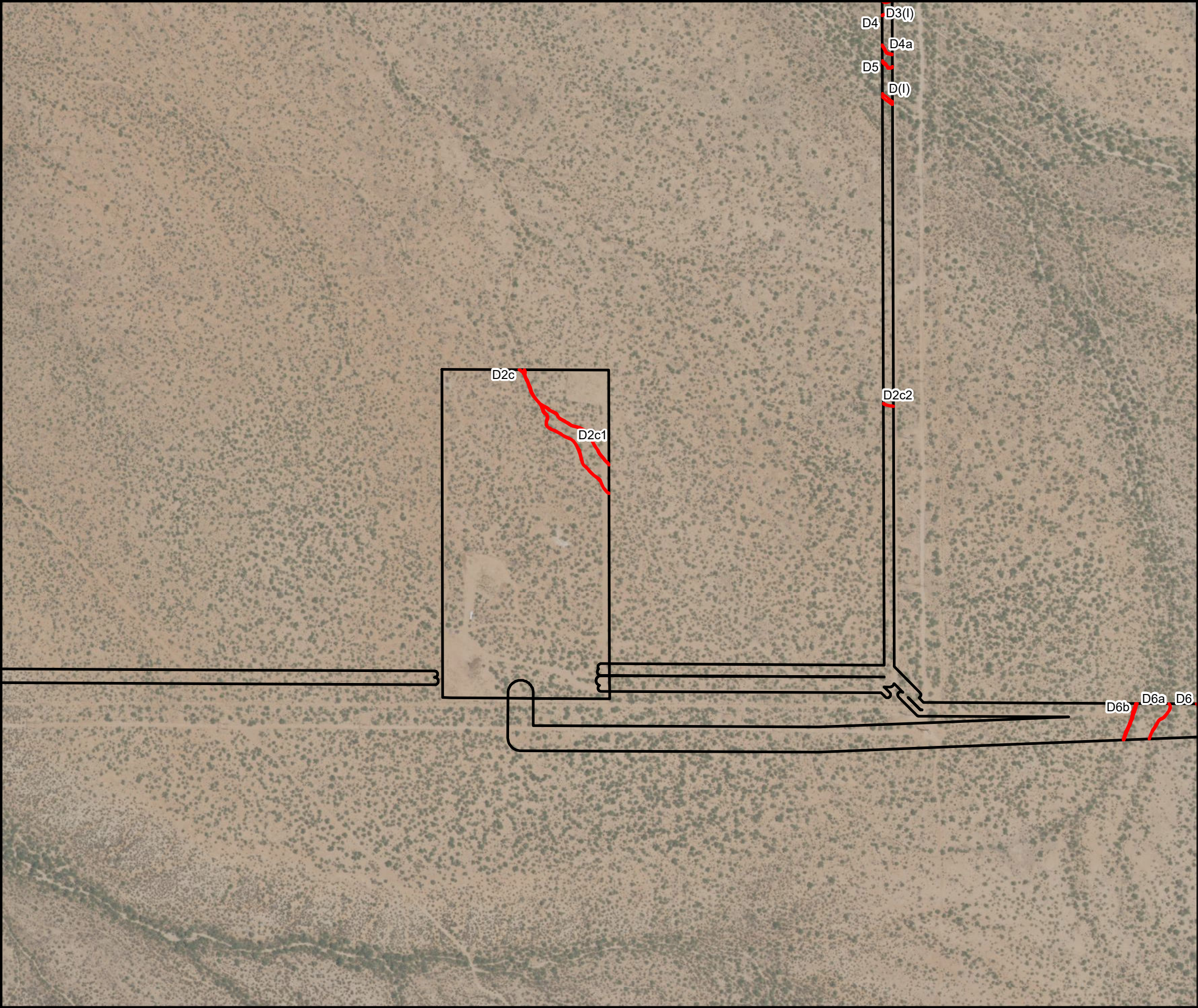
Image Source: ArcGIS Online, USA NAIP 2019, Natural Color and World Topographic Map

WestLand Resources

ROSEMONT COPPER COMPANY

Rosemont Copper Project
Utility Corridor and West Side Operations
Jurisdictional Determination
Corps File No. SPL-2008-0816

Sheet 6 of 23



APPROVED JURISDICTIONAL DETERMINATION
U.S. Army Corps of Engineers, Los Angeles District
Application No. SPL - 2008 - 0816 -

Boundary of area surveyed for jurisdictional waters of the United States

Ordinary High Water Mark

400'

Scale

2019

Date of Photograph

No

Site Visit by Corps (Y/N)

N/A

Date:

March 24, 2021

Date Delineation issued by Corps

M. Langley

Corps Project Manager

Sheet 7 of 23

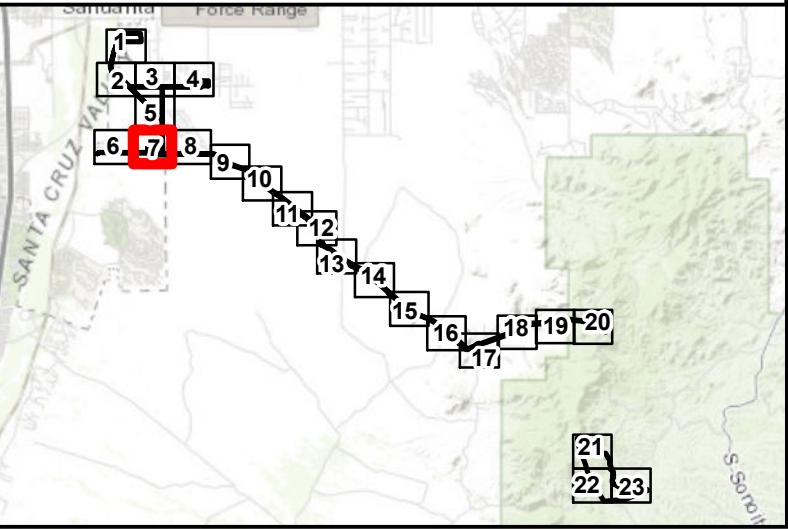
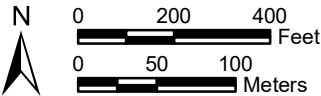


Image Source: ArcGIS Online, USA NAIP 2019, Natural Color and World Topographic Map



ROSEMONT COPPER COMPANY
Rosemont Copper Project
Utility Corridor and West Side Operations
Jurisdictional Determination
Corps File No. SPL-2008-0816



APPROVED JURISDICTIONAL DETERMINATION
U.S. Army Corps of Engineers, Los Angeles District
Application No. SPL - 2008 - 0816 -

Boundary of area surveyed for jurisdictional waters of the United States

Ordinary High Water Mark

Waters of the United States

Wetland Boundary
(If legend is blank no wetlands occur in survey area)

400'

Scale

2019

Date of Photograph

No

Site Visit by Corps (Y/N)

Date:

N/A

March 24, 2021

Date Delineation issued by Corps

M. Langley

Corps Project Manager

Sheet

8

of

23

An inset map showing the project location within a larger area. The map includes labels for Santa Cruz Valley, Force Range, and S. Santa. Numbered points 1 through 23 are marked on the map, with point 8 highlighted in red.

Image Source: ArcGIS Online, USA NAIP 2019, Natural Color and World Topographic Map

N

0 200 400 Feet

0 50 100 Meters

WestLand Resources

ROSEMONT COPPER COMPANY

Rosemont Copper Project

Utility Corridor and West Side Operations

Jurisdictional Determination

Corps File No. SPL-2008-0816

Sheet 8 of 23



APPROVED JURISDICTIONAL DETERMINATION
U.S. Army Corps of Engineers, Los Angeles District
Application No. SPL - 2008 - 0816 -

Boundary of area surveyed for jurisdictional waters of the United States

Ordinary High Water Mark

Waters of the United States

Wetland Boundary
(If legend is blank no wetlands occur in survey area)

400'

Scale

2019

Date of Photograph

No

Site Visit by Corps (Y/N)

Date:

N/A

March 24, 2021

Date Delineation issued by Corps

M. Langley

Corps Project Manager

Sheet

9

of

23

Image Source: ArcGIS Online, USA NAIP 2019, Natural Color and World Topographic Map

N

0

200

400

Feet

0

50

100

Meters

WestLand Resources

ROSEMONT COPPER COMPANY

Rosemont Copper Project

Utility Corridor and West Side Operations

Jurisdictional Determination

Corps File No. SPL-2008-0816

Sheet 9 of 23



APPROVED JURISDICTIONAL DETERMINATION
U.S. Army Corps of Engineers, Los Angeles District
Application No. SPL - 2008 - 0816 -

Boundary of area surveyed for jurisdictional waters of the United States

Ordinary High Water Mark

Waters of the United States

Wetland Boundary
(If legend is blank no wetlands occur in survey area)

400'

Scale

2019

Date of Photograph

No

Site Visit by Corps (Y/N)

Date:

N/A

March 24, 2021

Date Delineation issued by Corps

M. Langley

Corps Project Manager

Sheet

10

of

23

Image Source: ArcGIS Online, USA NAIP 2019, Natural Color and World Topographic Map

ROSEMONT COPPER COMPANY

Rosemont Copper Project
Utility Corridor and West Side Operations
Jurisdictional Determination
Corps File No. SPL-2008-0816

Sheet 10 of 23



APPROVED JURISDICTIONAL DETERMINATION
U.S. Army Corps of Engineers, Los Angeles District
Application No. SPL - 2008 - 0816 -

Boundary of area surveyed for jurisdictional waters of the United States

Ordinary High Water Mark

Waters of the United States

Wetland Boundary
(If legend is blank no wetlands occur in survey area)

400'

Scale

2019

Date of Photograph

No

Site Visit by Corps (Y/N)

Date: N/A

March 24, 2021

Date Delineation issued by Corps

M. Langley

Corps Project Manager

Sheet 11 of 23

An inset map showing the project location within a larger geographic context. The map includes labels for 'Santa Cruz Valley' and 'Force Range'. A series of numbered boxes (1 through 23) are arranged in a grid-like pattern, with box 11 highlighted in red, indicating the current sheet's location. The map also shows topographic features like hills and rivers.

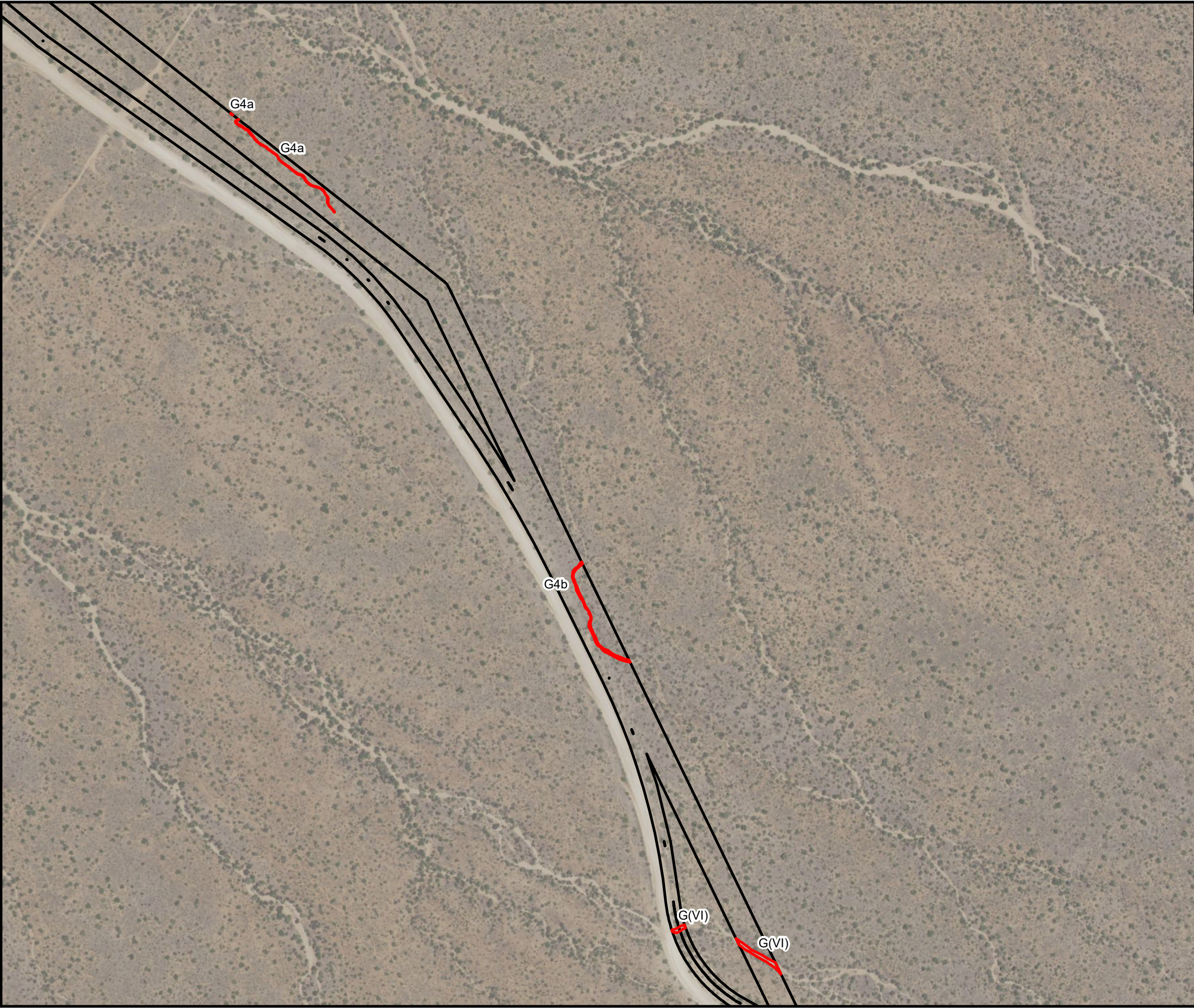
Image Source: ArcGIS Online, USA NAIP 2019, Natural Color and World Topographic Map

A north arrow pointing upwards, labeled 'N'. Below it are two scale bars: one in feet (0 to 400) and one in meters (0 to 100).

The logo for WestLand Resources, featuring a stylized blue mountain range above the company name 'WestLand Resources'.

ROSEMONT COPPER COMPANY
Rosemont Copper Project
Utility Corridor and West Side Operations
Jurisdictional Determination
Corps File No. SPL-2008-0816

Sheet 11 of 23



APPROVED JURISDICTIONAL DETERMINATION
U.S. Army Corps of Engineers, Los Angeles District
Application No. SPL - 2008 - 0816 -

Boundary of area surveyed for jurisdictional waters of the United States

Ordinary High Water Mark

Waters of the United States

Wetland Boundary
(If legend is blank no wetlands occur in survey area)

400' Scale 2019 Date of Photograph


No Site Visit by Corps (Y/N) Date: N/A

March 24, 2021 Date Delineation issued by Corps

M. Langley Corps Project Manager

Sheet 12 of 23

Image Source: ArcGIS Online, USA NAIP 2019, Natural Color and World Topographic Map


WestLand Resources

ROSEMONT COPPER COMPANY
Rosemont Copper Project
Utility Corridor and West Side Operations
Jurisdictional Determination
Corps File No. SPL-2008-0816

Sheet 12 of 23



APPROVED JURISDICTIONAL DETERMINATION
U.S. Army Corps of Engineers, Los Angeles District
Application No. SPL - 2008 - 0816 -

Boundary of area surveyed for jurisdictional waters of the United States

Ordinary High Water Mark

Waters of the United States

Wetland Boundary
(If legend is blank no wetlands occur in survey area)

400'

Scale

2019

Date of Photograph

No

Site Visit by Corps (Y/N)

Date:

N/A

March 24, 2021

Date Delineation issued by Corps

M. Langley

Corps Project Manager

Sheet

13

of

23

Image Source: ArcGIS Online, USA NAIP 2019, Natural Color and World Topographic Map

ROSEMONT COPPER COMPANY
Rosemont Copper Project
Utility Corridor and West Side Operations
Jurisdictional Determination
Corps File No. SPL-2008-0816

Sheet 13 of 23



APPROVED JURISDICTIONAL DETERMINATION
U.S. Army Corps of Engineers, Los Angeles District
Application No. SPL - 2008 - 0816 -

Boundary of area surveyed for jurisdictional waters of the United States

Ordinary High Water Mark

Waters of the United States

Wetland Boundary
(If legend is blank no wetlands occur in survey area)

400'

Scale

2019

Date of Photograph

No

Site Visit by Corps (Y/N)

Date: N/A

March 24, 2021

Date Delineation issued by Corps

M. Langley

Corps Project Manager

Sheet 14 of 23

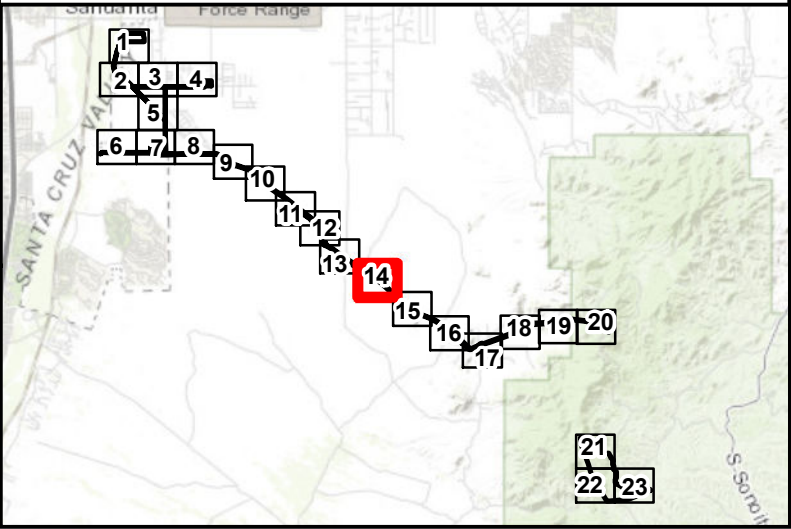
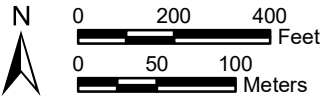


Image Source: ArcGIS Online, USA NAIP 2019, Natural Color and World Topographic Map



ROSEMONT COPPER COMPANY
Rosemont Copper Project
Utility Corridor and West Side Operations
Jurisdictional Determination
Corps File No. SPL-2008-0816



APPROVED JURISDICTIONAL DETERMINATION
U.S. Army Corps of Engineers, Los Angeles District
Application No. SPL - 2008 - 0816 -

Boundary of area surveyed for jurisdictional waters of the United States

Ordinary High Water Mark

400'

Scale

2019

Date of Photograph

No

Site Visit by Corps (Y/N)

Date: N/A

March 24, 2021

Date Delineation issued by Corps

M. Langley

Corps Project Manager

Sheet 15 of 23

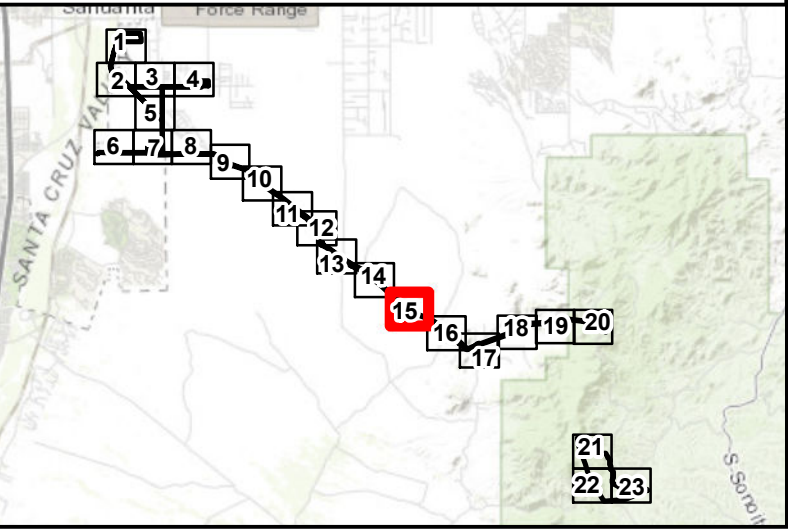


Image Source: ArcGIS Online, USA NAIP 2019, Natural Color and World Topographic Map



ROSEMONT COPPER COMPANY
Rosemont Copper Project
Utility Corridor and West Side Operations
Jurisdictional Determination
Corps File No. SPL-2008-0816



APPROVED JURISDICTIONAL DETERMINATION
U.S. Army Corps of Engineers, Los Angeles District
Application No. SPL - 2008 - 0816 -

Boundary of area surveyed for jurisdictional waters of the United States

Ordinary High Water Mark

Waters of the United States

Wetland Boundary
(If legend is blank no wetlands occur in survey area)

400'

Scale

2019

Date of Photograph

No

Site Visit by Corps (Y/N)

Date: N/A

March 24, 2021

Date Delineation issued by Corps

M. Langley

Corps Project Manager

Sheet 16

of

23

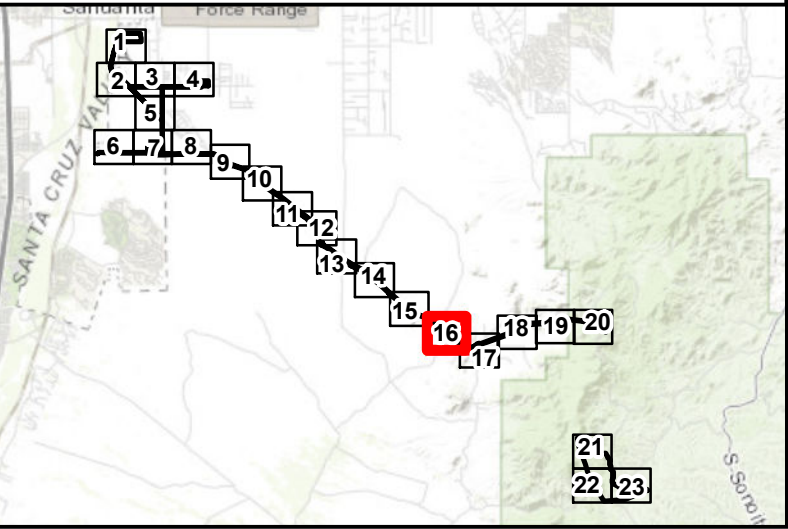
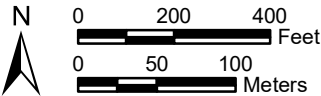






Image Source: ArcGIS Online, USA NAIP 2019, Natural Color and World Topographic Map



ROSEMONT COPPER COMPANY
Rosemont Copper Project
Utility Corridor and West Side Operations
Jurisdictional Determination
Corps File No. SPL-2008-0816



Application No. SPL - 2008 - 0816 - _____

-  Boundary of area surveyed for jurisdictional waters of the United States
 Ordinary High Water Mark
 Waters of the United States
 Wetland Boundary
 (If legend is blank no wetlands occur in survey area)

400' Scale 2019 Date of Photograph

No Site Visit by Corps (Y/N) Date: N/A

March 24, 2021 Date Delineation issued by Corps

M. Langley

Corps Project Manager

Sheet 17 of 23

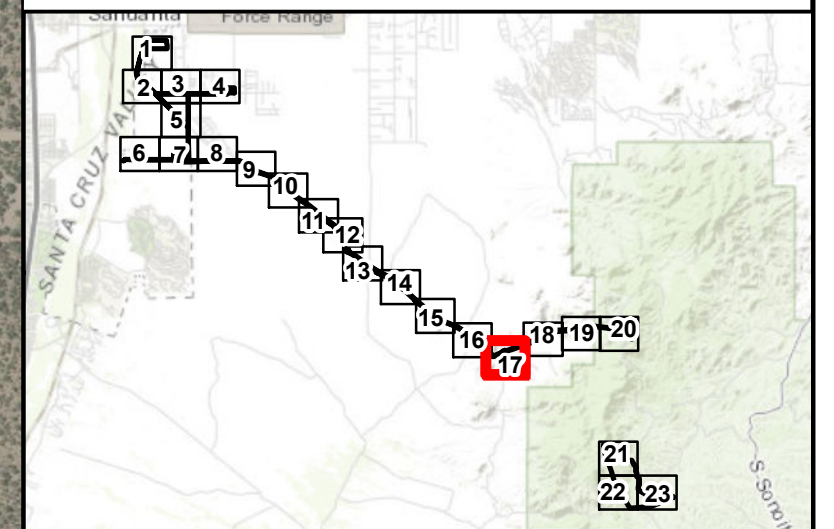
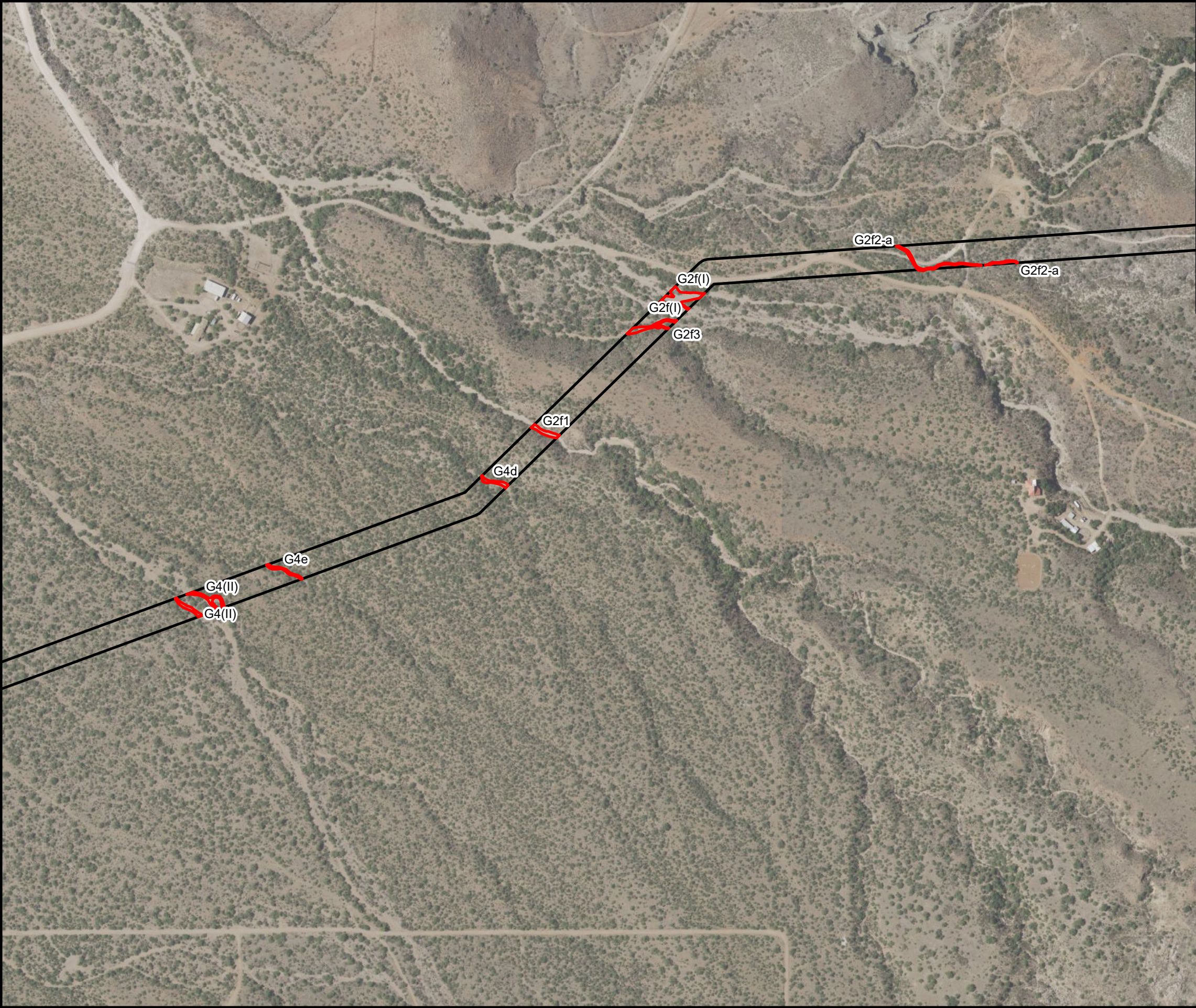


Image Source: ArcGIS Online, USA NAIP 2019, Natural Color and World Topographic Map



WestLand Resources

ROSEMONT COPPER COMPANY
Rosemont Copper Project
Utility Corridor and West Side Operations
Jurisdictional Determination
Corps File No. SPL-2008-0816



APPROVED JURISDICTIONAL DETERMINATION
U.S. Army Corps of Engineers, Los Angeles District
Application No. SPL - 2008 - 0816 -

Boundary of area surveyed for jurisdictional waters of the United States

Ordinary High Water Mark

400'

Scale

2019

Date of Photograph

No

Site Visit by Corps (Y/N)

Date: N/A

March 24, 2021

Date Delineation issued by Corps

M. Langley

Corps Project Manager

Sheet 18 of 23

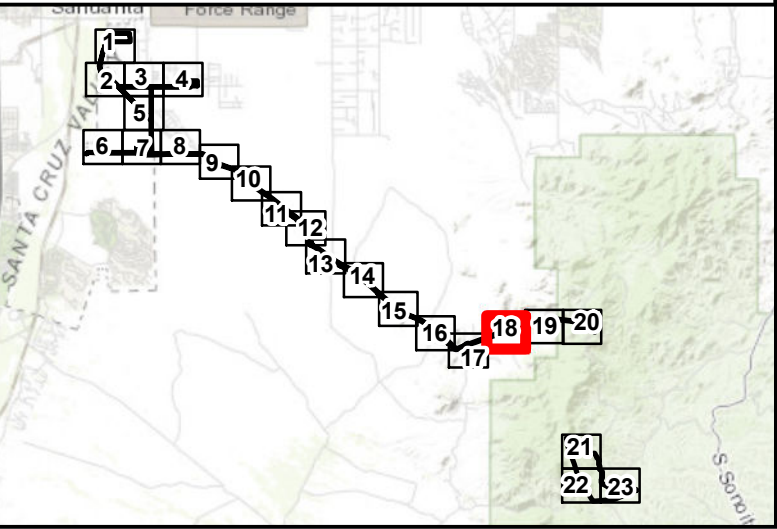


Image Source: ArcGIS Online, USA NAIP 2019, Natural Color and World Topographic Map

N

0 200 400 Feet

0 50 100 Meters

WestLand Resources

ROSEMONT COPPER COMPANY

Rosemont Copper Project

Utility Corridor and West Side Operations

Jurisdictional Determination

Corps File No. SPL-2008-0816

Sheet 18 of 23



APPROVED JURISDICTIONAL DETERMINATION
U.S. Army Corps of Engineers, Los Angeles District
Application No. SPL - 2008 - 0816 -

Boundary of area surveyed for jurisdictional waters of the United States

Ordinary High Water Mark

400'

Scale

2019

Date of Photograph

No

Site Visit by Corps (Y/N)

N/A

Date:

March 24, 2021

Date Delineation issued by Corps

M. Langley

Corps Project Manager

Sheet 19 of 23

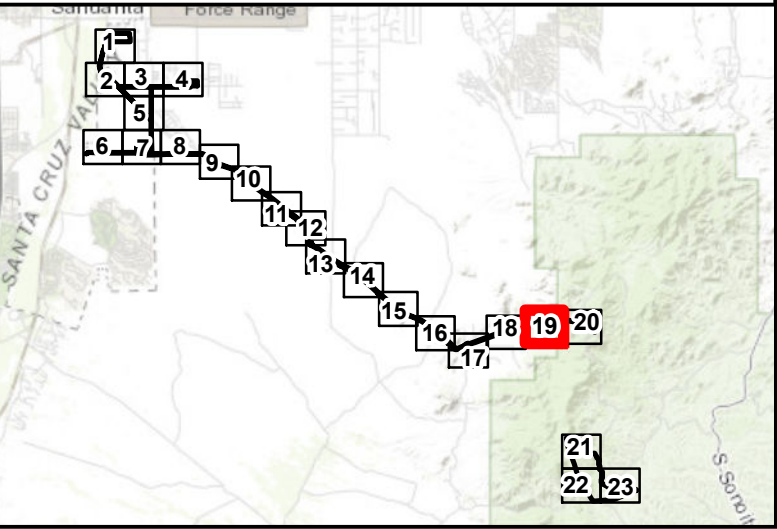
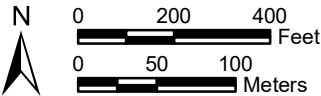


Image Source: ArcGIS Online, USA NAIP 2019, Natural Color and World Topographic Map



ROSEMONT COPPER COMPANY

Rosemont Copper Project
Utility Corridor and West Side Operations
Jurisdictional Determination
Corps File No. SPL-2008-0816



APPROVED JURISDICTIONAL DETERMINATION
U.S. Army Corps of Engineers, Los Angeles District
Application No. SPL - 2008 - 0816 -

Boundary of area surveyed for jurisdictional waters of the United States

Ordinary High Water Mark

400'

Scale

2019

Date of Photograph

No

Site Visit by Corps (Y/N)

Date: N/A

March 24, 2021

Date Delineation issued by Corps

M. Langley

Corps Project Manager

Sheet 20 of 23

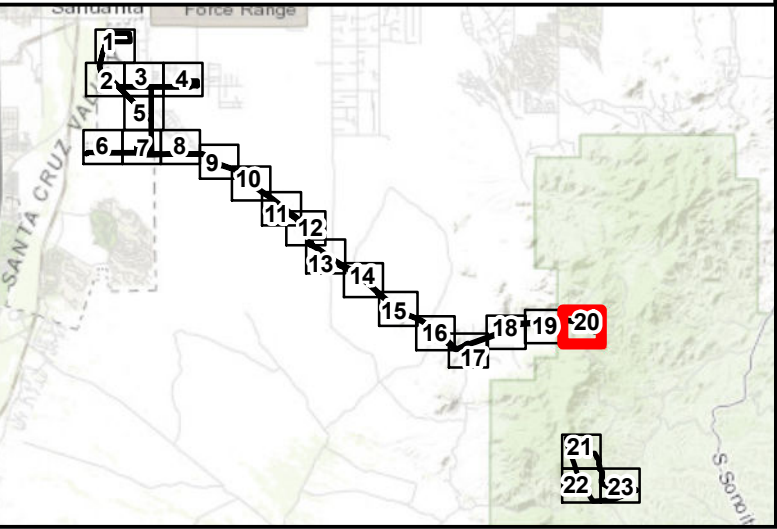


Image Source: ArcGIS Online, USA NAIP 2019, Natural Color and World Topographic Map

N

0 200 400 Feet

0 50 100 Meters

WestLand Resources

ROSEMONT COPPER COMPANY
Rosemont Copper Project
Utility Corridor and West Side Operations
Jurisdictional Determination
Corps File No. SPL-2008-0816
Sheet 20 of 23



APPROVED JURISDICTIONAL DETERMINATION
U.S. Army Corps of Engineers, Los Angeles District
Application No. SPL - 2008 - 0816 -

Boundary of area surveyed for jurisdictional waters of the United States

Ordinary High Water Mark

Waters of the United States

Wetland Boundary
(If legend is blank no wetlands occur in survey area)

400'

Scale

2019

Date of Photograph

No

Site Visit by Corps (Y/N)

Date:

N/A

March 24, 2021

Date Delineation issued by Corps

M. Langley

Corps Project Manager

Sheet

21

of

23

An inset map showing a larger geographic area. A series of numbered points (1 through 23) are plotted along a path. Point 21 is highlighted with a red border. The map includes labels for 'Santa Cruz Valley' and 'S. Santa Cruz'. A scale bar and north arrow are also present.

Image Source: ArcGIS Online, USA NAIP 2019, Natural Color and World Topographic Map

N

0

200

400

Feet

0

50

100

Meters

WestLand Resources

ROSEMONT COPPER COMPANY

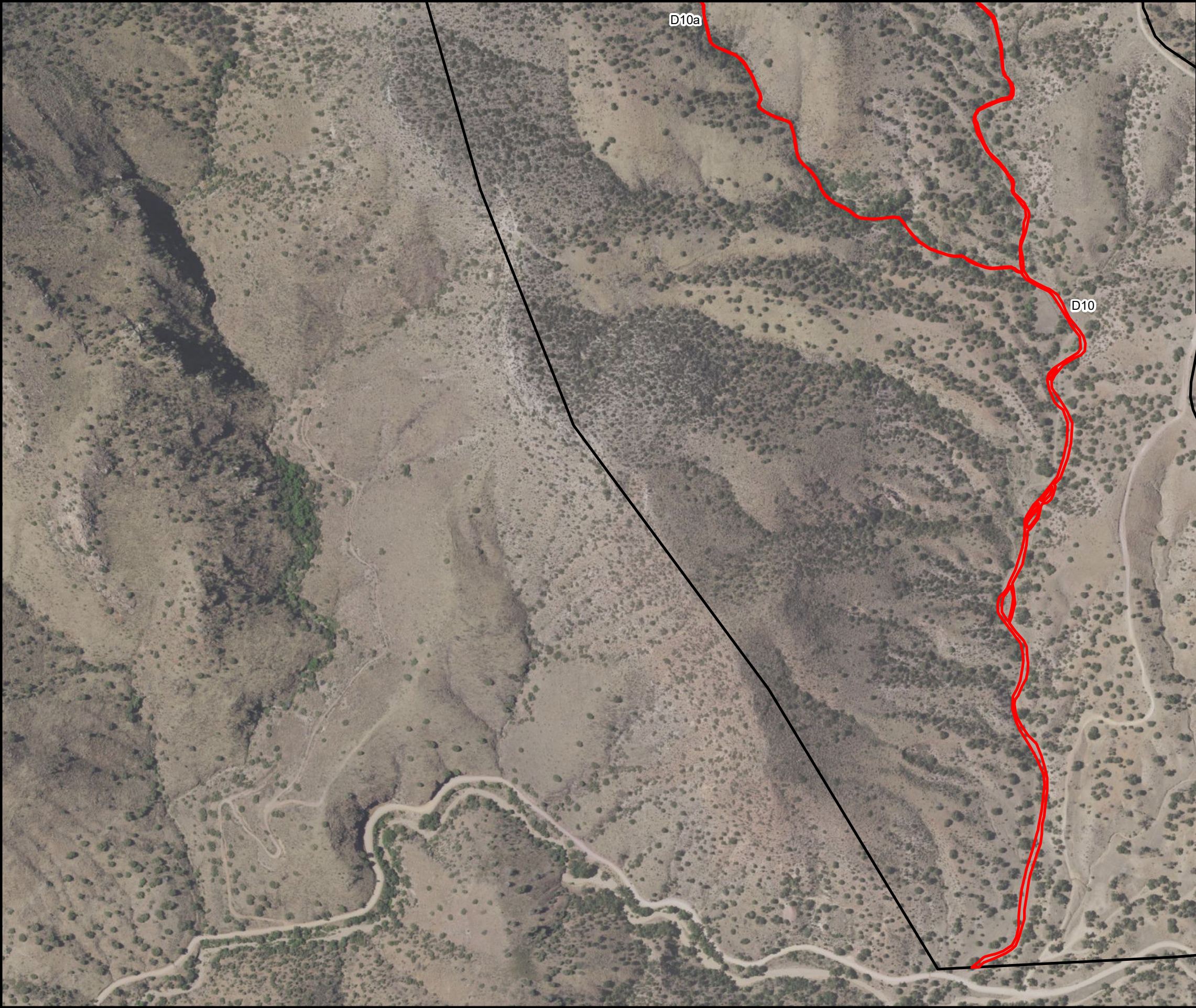
Rosemont Copper Project

Utility Corridor and West Side Operations

Jurisdictional Determination

Corps File No. SPL-2008-0816

Sheet 21 of 23



APPROVED JURISDICTIONAL DETERMINATION
U.S. Army Corps of Engineers, Los Angeles District
Application No. SPL - 2008 - 0816 -

Boundary of area surveyed for jurisdictional waters of the United States

Ordinary High Water Mark

400'

Scale

2019

Date of Photograph

No

Site Visit by Corps (Y/N)

Date: N/A

March 24, 2021

Date Delineation issued by Corps

M. Langley

Corps Project Manager

Sheet 22 of 23

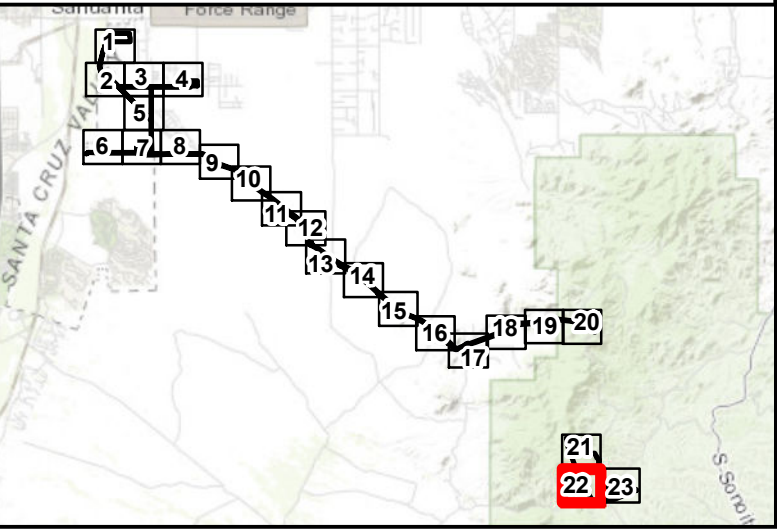


Image Source: ArcGIS Online, USA NAIP 2019, Natural Color and World Topographic Map

N

0 200 400 Feet

0 50 100 Meters

WestLand Resources

ROSEMONT COPPER COMPANY

Rosemont Copper Project

Utility Corridor and West Side Operations

Jurisdictional Determination

Corps File No. SPL-2008-0816

Sheet 22 of 23



APPROVED JURISDICTIONAL DETERMINATION
U.S. Army Corps of Engineers, Los Angeles District
Application No. SPL - 2008 - 0816 -

Boundary of area surveyed for jurisdictional waters of the United States

Ordinary High Water Mark

Waters of the United States

Wetland Boundary
(If legend is blank no wetlands occur in survey area)

400'

Scale

2019

Date of Photograph

No

Site Visit by Corps (Y/N)

Date:

N/A

March 24, 2021

Date Delineation issued by Corps

M. Langley

Corps Project Manager

Sheet

23

of

23

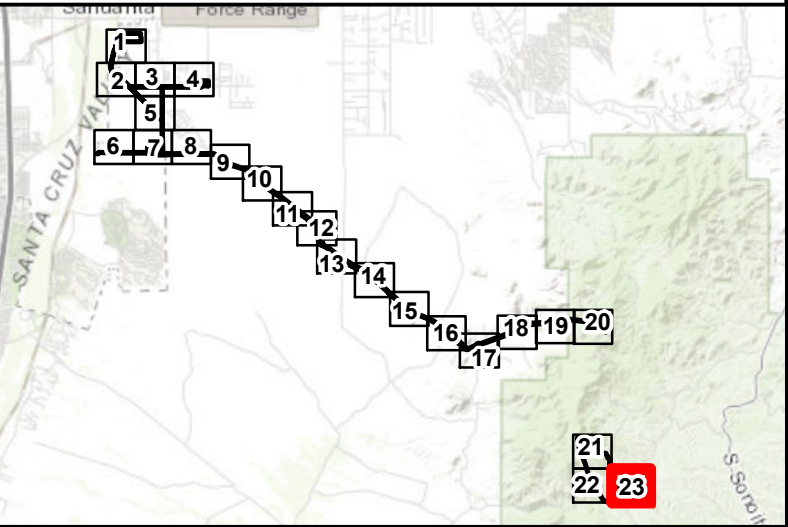
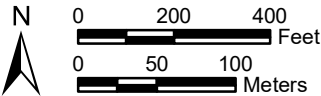


Image Source: ArcGIS Online, USA NAIP 2019, Natural Color and World Topographic Map



ROSEMONT COPPER COMPANY

Rosemont Copper Project
Utility Corridor and West Side Operations
Jurisdictional Determination
Corps File No. SPL-2008-0816